

Button-Down Blouse (Plus Size) 04/2012

By: burda style magazine

<http://www.burdastyle.com/projects/button-down-blouse-plus-size->



Button-down blouse sewing pattern for plus size. This blouse is made from a lovely silk georgette fabric. It has a standing collar in a contrasting color and a hidden button placket.

Materials

Georgette, width: 140 cm (55 ins), length: Size 44 – 48: 1.50 m (1 3/4 yds), Size 50: 1.85 m (2 1/8 yds) Size 52: 1.90 m (2 1/8 yds) of dark colour and 0.35 m (1/2 yd) of light colour for all sizes. Vilene/Pellon G 785. 9 light-coloured buttons. 7 flat buttons for concealed fastening.

Step 1 — Preparations



Paper cut for ANSI A (German DIN A4) prints:

This pattern is printed on 8.5 × 11 sheets of plain paper. Do not scale or center pages before printing. Wait until all sheets are printed out before beginning to tape them together. **Do not cut out pattern pieces yet**— Arrange the sheets on a large, hard, flat surface so that they fit together, matching up like numbers and letters (i.e. 6A to 6A). To tape pattern together, fold under the margin of one piece (6A) and tape right against the line of it's matching number/letter (6A).

Trace the pattern pieces from the pattern sheet following the lines and markings for the correct size.

Lengthen piece 22 as indicated.

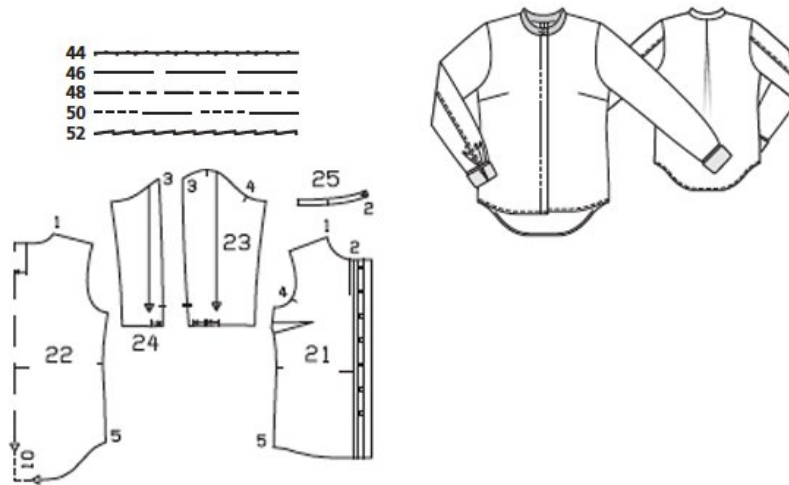
The buttonholes on piece 21 are marked for size 44. For sizes 46 – 52, mark the top buttonhole the same distance from neck edge as for size 44. The bottom buttonhole is the same for all sizes. Space the other buttonholes evenly in between.

burda style magazine pattern do not have seam allowance included.

Seam and hem allowances to be added: Seams, edges, and hem 1.5 cm (5/8 in), no allowance on vertical edge

of front self-facing.

Step 2 — Cutting out

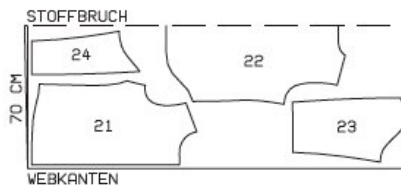
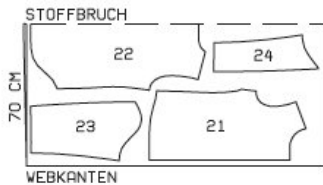
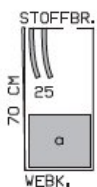


Fabric width, 140 cm

Light fabric
Sz. 44-48

Dark fabric
Sz. 44 - 48

Sz. 50, 52



stoffbruch = fabric fold
webkanten = selvage

Dark fabric:

- 21 front 2x
- 22 back, on a fold 1x
- 23 sleeve front 2x
- 24 sleeve back 2x

Light fabric:

- 25 standing collar, on a fold 2x

Also draft and cut the following piece:

2 cuffs, 25.5 26 26.5 27 27.5 cm (10 10 1/4 10 1/2 10 3/4 11 ins) long, 30 cm (12 ins) wide, finished width 15 cm (6 ins), turned up 7.5 cm (3 ins) wide.

Interfacing: Cut interfacing and iron to standing collar.

Step 3 — Sewing



Stitch the bust darts. Press darts down.

For the inverted pleat, fold the back along centre back, right side facing in. Stitch the pleat lines together, from the upper edge to the arrow marking. Unfold back again. Press the pleat so that it is centered over the pleat seam. Baste pleat to upper edge. Topstitch close to each side of pleat seam.

Stitch shoulder seams. Trim seam allowances to 7 mm (1/4 in), neaten together, and press onto back.

Stitch back sleeve seams, leaving vents open. Clip seam allowance of sleeve backs, 1 cm (3/8 in) above the sleeve vents. Press allowances onto sleeve fronts and press allowances on sleeve vent edges to wrong side. Turn in seam allowances and sleeve vent allowances and baste. Topstitch sleeve fronts 7 mm (1/4 in) from sleeve vent edges and seams. Topstitch close to back sleeve vent edges and stitch across top end of vent.

Stitch sleeves to armhole edges. Neaten seam allowances together and press toward sleeves. Stitch side seams and lower sleeve seams as continuous seams. Press seam allowances onto back.

Press hem allowance to inside, turn edge under, and stitch.

Fold the front self-facings to the inside on the fold line and press. Work the buttonholes in the right front facing. On both fronts, turn the folded facings to the inside and press. Baste at neck edge and sew to hem edge.

Sew standing collar. Lay collar pieces right sides together. Stitch along front and upper edges, beginning and end stitching in front, exactly on seam line of joining edge. Trim the seam allowances. Turn collar right side out and press. Stitch outer collar piece to neck edge. Turn under edge of inside collar piece and baste along joining seam. Topstitch collar close to joining seam.

Fold pleats in lower sleeve edges in direction of arrows and baste. Stitch cuffs to lower sleeve edges. Press allowances of cuff joining seams and of opposite cuff edges onto cuffs. Fold cuffs lengthwise, right side facing in, and stitch across ends. Turn right side out. Baste inside edges in place. Topstitch cuffs close to joining seam. Work 2 buttonholes in both ends of each cuff 1.5 cm and 6 cm (5/8 in and 2 3/8 ins) below joining seam. Fold lower cuff edges up, 7.5 cm (3 ins) wide and press. Sew pairs of buttons together, with a thread bar, and button into the cuffs.

BurdaStyle

Button-Down Blouse (Plus Size) 04/2012