

12/2011 Plus Size Sequin Chiffon Tunic

By: burda style magazine

<http://www.burdastyle.com/projects/122011-plus-size-sequin-chiffo>



Sequin chiffon tunic burda style magazine patterns FAQ

Materials

Sequin fabric

Step 1 — Preparation



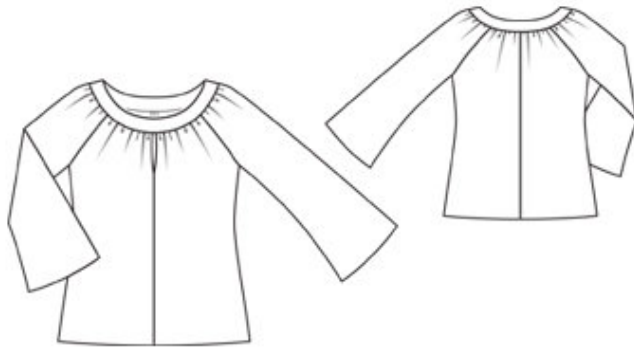
Paper cut for ANSI A (German DIN A4) prints:

This pattern is printed on 8.5 × 11 sheets of plain paper. Do not scale or center pages before printing. Wait until all sheets are printed out before beginning to tape them together. **Do not cut out pattern pieces yet**— Arrange the sheets on a large, hard, flat surface so that they fit together, matching up like numbers and letters (i.e. 6A to 6A). To tape pattern together, fold under the margin of one piece (6A) and tape right against the line of it's matching number/letter (6A).

burda style magazine pattern do not have seam allowance included.

Seam and hem allowances to be added: Seams and edges 1.5 cm (5/8 in).

Step 2 — Cutting out



Sequin chiffon:

21 front 2x

22 back 2x

23 sleeve 2x

24 front neck band, on a fold 1x

25 back neck band, on a fold 1x

Plain chiffon:

24 front neck band, on a fold 2x

25 back neck band, on a fold 2x

a) 2 bias strips for sleeve attachment seams, 48 $\hat{=}$ 50 $\hat{=}$ 52 $\hat{=}$ 54 $\hat{=}$ 56 cm (19 $\hat{=}$ 19 $\frac{3}{4}$ $\hat{=}$ 20 $\frac{1}{2}$ $\hat{=}$ 21 $\frac{1}{4}$ $\hat{=}$ 22 $\frac{1}{4}$ ins) long, 3 cm (1 $\frac{1}{4}$ ins) wide (incl. allowances),

b) 2 bias strips for lower sleeve edges, 63 $\hat{=}$ 64 $\hat{=}$ 66 $\hat{=}$ 68 $\hat{=}$ 70 cm (24 $\frac{3}{4}$ $\hat{=}$ 25 $\frac{1}{4}$ $\hat{=}$ 26 $\hat{=}$ 26 $\frac{3}{4}$ $\hat{=}$ 27 $\frac{3}{4}$ ins) long, 3 cm (1 $\frac{1}{4}$ ins) wide (incl. allowances).

View A:

c) bias strip for hem 140 $\hat{=}$ 145 $\hat{=}$ 150 $\hat{=}$ 155 $\hat{=}$ 165 cm (55 $\frac{1}{4}$ $\hat{=}$ 57 $\hat{=}$ 59 $\hat{=}$ 61 $\hat{=}$ 65 ins) long altogether, 3 cm (1 $\frac{1}{4}$ ins) wide (incl. allowances).

View B:

c) bias strip for hem, a total of 155 $\hat{=}$ 160 $\hat{=}$ 165 $\hat{=}$ 175 $\hat{=}$ 180 cm (61 $\hat{=}$ 63 $\hat{=}$ 65 $\hat{=}$ 69 $\hat{=}$ 71 ins) long, 3 cm (1 $\frac{1}{4}$ ins) wide (incl. allowances),

d) facing strip for elastic casing, a total of 133 $\hat{=}$ 137 $\hat{=}$ 143 $\hat{=}$ 149 $\hat{=}$ 155 cm (52 $\frac{1}{2}$ $\hat{=}$ 54 $\hat{=}$ 56 $\frac{1}{2}$ $\hat{=}$ 58 $\frac{3}{4}$ $\hat{=}$ 61 ins) long, 3.5 cm (1 $\frac{1}{2}$ ins) wide (incl. allowances).

Interfacing: See pattern layout.

Step 3 — Allowances

Stitch centre front seam below slit mark. Press seam allowances open and press allowances on slit edges to wrong side. Baste allowances of slit edges to upper edge. Stitch centre back seam, side seams, and sleeve seams.

Step 4 — Bias strip

Fold bias strips for sleeve hems in half lengthwise and press. Turn in one end of each strip. Stitch folded strips to lower sleeve edges, from right side, so that fold edge lies on garment piece, 7 mm (1/4 in) past seam line, and open end lies on turned-in end of strip. Turn strips to inside and sew in place.

Step 5 — Sleeves

Stitch sleeves to front and back. Trim seam allowances of sleeve attachment seams to 7 mm (1/4 in) wide and bind with bias strips.

Step 6 — Neck

Gather neck edge, gathering front edges to 14.5 — 14.8 — 15 — 15.3 — 15.5 cm (53/4 — 57/8 — 6 — 6 1/8 — 6 1/4 ins), sleeve edges to 20.4 — 20.7 — 20.9 — 21.2 — 21.5 cm (8 1/8 — 8 1/4 — 8 3/8 — 8 3/8 — 8 1/2 ins), and back edge to 21.5 — 22 — 22.5 — 23 — 23.5 (8 1/2 — 8 3/4 — 9 — 9 1/8 — 9 1/4 ins) cm. Lay each band piece of sequin chiffon on a plain band piece, with wrong side facing right side. Baste pieces together around all edges and treat as one layer of fabric from now on. Use remaining plain chiffon pieces as inside pieces. Stitch shoulder seams of band. Press seam allowances open. Stitch outer band to tunic, matching slit edges to seam mark (seam number 6). Press seam allowances onto band. Lay inside band right sides together with attached band and stitch together along neck edge. Trim seam allowances. Clip allowances of curves several times. Turn inside band up and stitch to seam allowances, close to seam. Turn inside band to inside. Turn in inside edge and sew to joining seam. Between the slit edges, sew lower edges of band together.

Step 7 — Hem

Face hem edge with the bias strip as for sleeves.

BurdaStyle

12/2011 Plus Size Sequin Chiffon Tunic