

long sleeve shirt out of 1,1m of stretch fabric

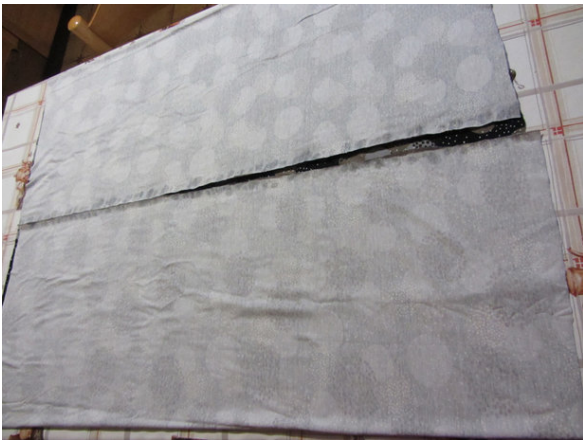
By: tejka

<http://www.burdastyle.com/techniques/long-sleeve-shirt-out-of-11m>



Hi, this is a short tutorial of how to work with minimal material.

Step 1 — 1.step



Hi, last time I bought exactly 1,1m jersey fabric with some retro pattern. My goal was to make long sleeve shirt. One thing to say, but another to make:) I will show you how to properly use fabric to make it. What you need is: pins, scissors, fabric (1,1mx1,4m), ruller, marker and a table. This pattern is Simple Blouse 12/2012 #119. I assume that pattern is bigger because it was drawn for non-elastic fabric. My client is 38 so I will take 36 and cut it with no sew allowance. Other wise shirt would be -believe me too big. Another thing to think. Sleeve is bigger than shirt, so try to gather it or maybe change the pattern sleeve.

Step 2 — 2.step



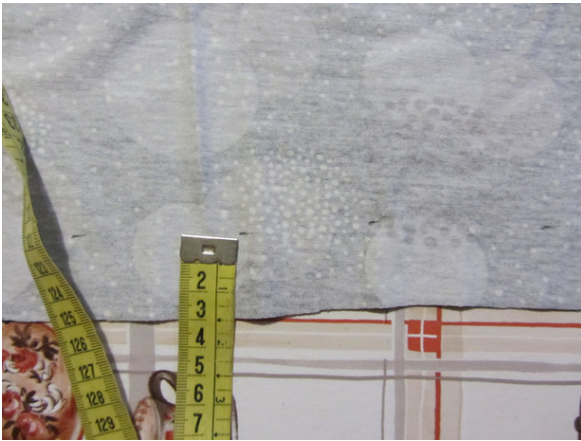
Before cutting it I washed my fabric and put it in a dryer. I always do that. Most of my clients and me use it, so this is a *pretry* of final product. I folded fabric on half.

Step 3 — 3.step



Then I cut out long piece 16 cm wide for a belt. Lately I will use this part by sewing it at the end of the shirt. I always lengthen the pattern, because you never know. It is never to late to cut... Now fabric is shorter.

Step 4 — 4.step



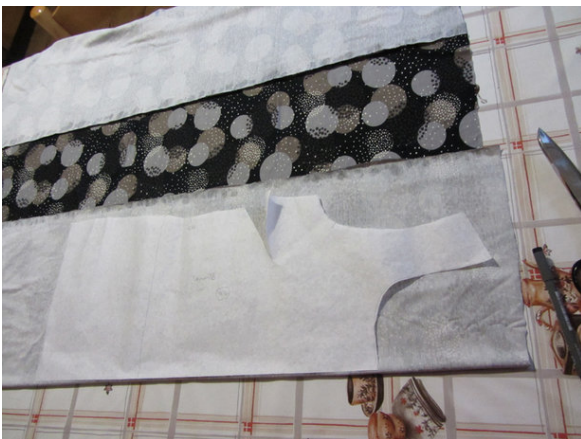
Then cut another belt 3cm wide for making neck line. Again, you have shorter fabric. All these belt pieces you may need when finishing sleeves or neck line. You don't have to cut them if you don't need them. In my experience I cut them always, even if I don't need them. Sometimes it happens that you need them but there is not enough fabric left.

Step 5 — 5.step



This is what's left.

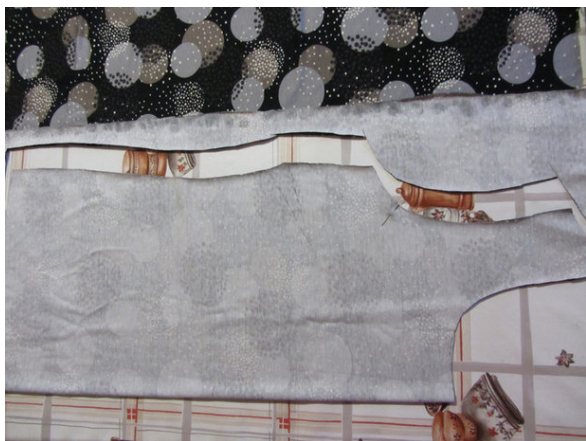
Step 6 — 6.step



Step 4 — 4.step

Now start with front pattern. Really try to start properly.

Step 7 — 7.step



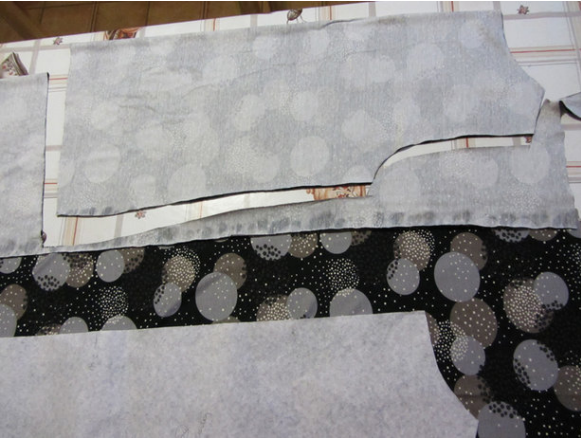
Cut out the pattern.

Step 8 — 8.step



Than cut the back.

Step 9 — 9.step



Here is the back.

Step 10 — 10.step



Now open the rest of the fabric. You should have something like this.

Step 11 — 11.step



Now take sleeve pattern (i changed it at the end so that fits more to the hand). Measure and shorten the pattern so that both of the sleeves goes on the fabric.

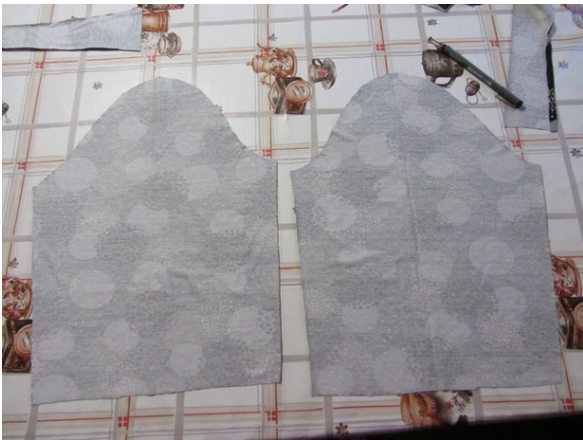
Step 9 — 9.step

Step 12 — 12.step



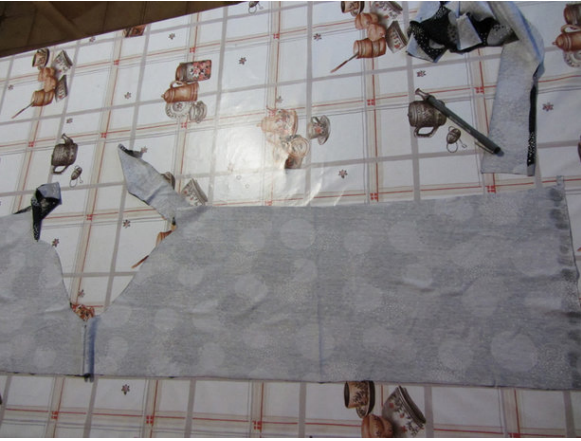
Do it like me. Sleeve on the right side in already drawn, turn it and draw it again for another arm.

Step 13 — 13.step



Here you have both half-sleeves.

Step 14 — 14.step



This is whatâ— s left. Actually the right leftover. I was to close to the table to make a photo of all fabric. You will use this for lengthening sleeves.

Step 15 — 15.step



Now copy that part of the sleeve that you couldâ— n use it before. Two times.

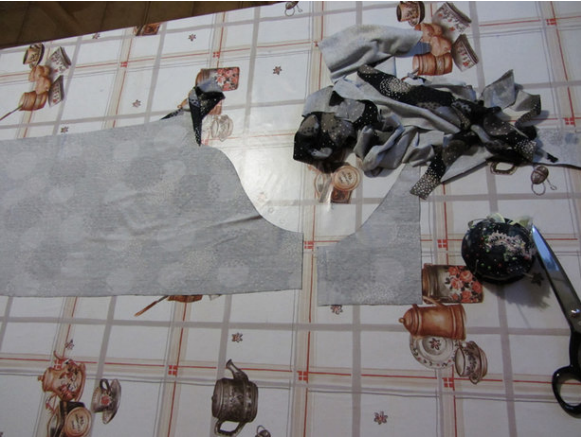
Step 16 — 16.step



As you see, this is how it will look like.

Step 14 — 14.step

Step 17 — 17.step



Ok. Finally this piece is last one. As you can see there is only a few pieces of fabric left.

BurdaStyle

long sleeve shirt out of 1,1m of stretch fabric