

Detachable Collar

By: burdastyle

<http://www.burdastyle.com/techniques/detachable-collar>



This detachable collar will add a unique detail to your outfit. This method allows you to make a special statement collar pattern out of an old shirt collar!

Step 1 — Remove Collar



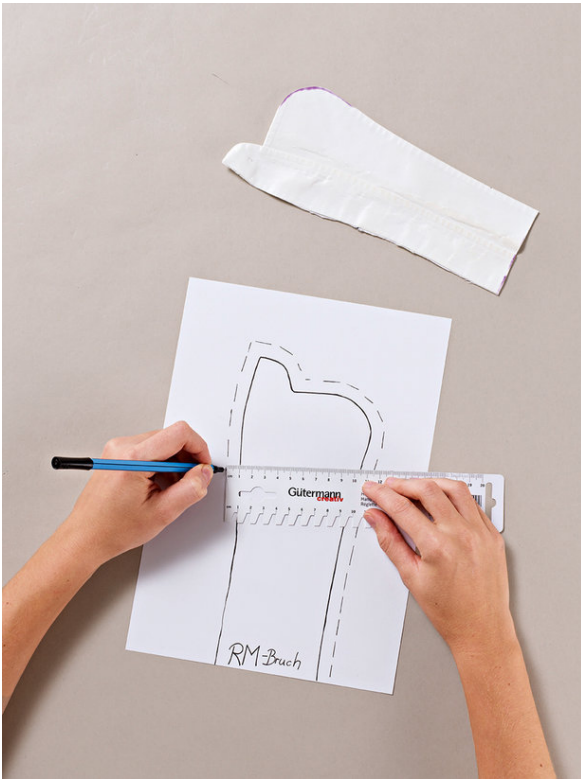
Cut the collar off at the lower edge.

Step 2 — Shape Collar



Round the point of the collar, using a water glass. Mark this curve with a marker.

Step 3 — Transfer Patter



Transfer the collar pattern onto paper, and add 1cm seam allowance. The middle is on fold.

Step 4 — Collar with Black Lace



Materials: A piece of cotton fabric, approx. 25 x 60 cm (10 x 24 ins). A piece of guipure lace fabric, 15 x 60 cm (6 x 24 ins). Fusible interfacing. 1 button. 1 brooch. Sewing thread. Instructions: Cut collar piece 2 times, on a fold. Iron interfacing to wrong side of one piece. Lay collar pieces together, right sides facing. Stitch edges together, at seam allowance width from edges, leaving approx. 5 cm (2 ins) open on inner edge of attached band, for turning. Trim seam allowances, trimming diagonally across corners. Turn collar right side out and press. Sew seam opening closed. Topstitch inner edge at width of band (approx. 3 cm/ 1 1/4 in from edge). Fold attached band onto collar and press. Work buttonhole in one end of band and sew button to opposite end. Pin lace fabric to collar so that lace extends past front curves and past outer edge. On these edges, trim lace along edges of lace pattern. Fold lace over fold edge of collar and pin to attached band. Sew lace to collar. Attach brooch to right end of band.

Step 5 — Collar with Roses



Materials: A piece of silk taffeta, approx. 25 x 70 cm (10 x 28 ins). For roses, a piece of lining taffeta, approx. 30 x 40 cm (12 x 16 ins). Fusible interfacing. 1 button. Sewing thread. Instructions: Sew collar, see step four (collar with black lace). For the roses, from silk taffeta cut approx. 8 circles, with ≈ 2 cm (3/4 in) and approx. 17 circles with ≈ 1.5 cm (5/8 in). Tear lining taffeta in strips, 1 cm (3/8 in) wide and 40 cm (16 ins) long. Sew lining strips to taffeta circles, in spirals, from outside to inside. Place roses on collar (not on attached band) and sew in place by hand.

Step 6 — Double Collar



Materials: Satin, approx. 25 x 60 cm (10 x 24 ins). Sequin fabric, approx. 15 x 60 cm (6 x 24 ins). Velvet,

approx. 25 x 60 cm (10 x 24 ins). Petersham ribbon, 2.5 cm (1 in) wide: 2.50 m (2 3/4 yds). Fusible interfacing. Sewing thread. Instructions: Cut collar piece twice from satin and once from sequin fabric, on the fabric fold. Iron interfacing to wrong sides of satin pieces. Baste sequin piece to right side of one satin piece (wrong side of sequin piece facing right side of satin) and treat as one layer of fabric. Sew collar, see step 4 (collar with black lace), omitting buttonhole and button. Pin petersham ribbon to attached band, with ends extending evenly long, as ties. Edgestitch ribbon in place. Approx. 4 cm (1 5/8 in) from one front end of band, work a 2.5 cm (1 in) long vertical slit (like a buttonhole). Trim ends of ribbon at angles. For the velvet collar, use the same pattern piece, but trim away the extending ends of attached band. Cut collar piece 2 times from velvet. Iron interfacing to wrong side of one velvet piece. Lay velvet pieces together, right sides facing. Stitch together along outer edges. Trim seam allowances. Turn collar right side out and press. Topstitch 5 mm (3/16 in) from seamed edges. Finish inner edges together. Pin velvet collar to petersham ribbon on attached band of satin collar and sew upper edge in place by hand. To wear the collar, overlap front band ends and run one end of ribbon up through the slit. Lay ribbon ends toward back and tie in a bow.

Step 7 — Collar with Crocheted Edge



Materials: Jacquard fabric (upper collar) and satin (under collar), each approx. 20 x 60 cm (8 x 24 ins). Fusible interfacing. 1 button. Sewing thread. Black lurex yarn (Festa from Lana Grossa). Red embroidery floss (Anchor). Crochet hook in correct size for yarn. Black buttonhole thread. Silver chain, 0.50 m (20 ins). Instructions: Sew collar, see step 4 (collar with black lace). Use buttonhole thread to work buttonhole stitch along outer edge of collar, inserting needle 5 mm (3/16 in) deep and spacing stitches 5 mm (3/16 in) apart. Use lurex yarn to crochet 2 rows of double crochet (dc) along outer collar edge, working the first row in loops of the buttonhole stitches and working 2 dc in each stitch along curves. To finish, work 1 row of dc with red embroidery floss. Hide yarn/thread ends. Sew chain to collar, 2 mm (scant 1/8 in) from outer edge.

BurdaStyle

Detachable Collar