

Drawstring Pants 04/2012

By: burda style magazine

<http://www.burdastyle.com/projects/drawstring-pants-042012>



These boys pants are perfect for playtime with their drawstring waistband and pockets. We made them in a navy and white checked linen for a casual but cool look.

Materials

141 Boys Trousers Height 110, 116, 122, 128, 134 cm Side length with waistband 65 69 73 77 82 cm (25 3/4 27 1/4 28 3/4 30 1/2 32 1/2 ins) Hem 41 42 43 44 45 cm (16 1/4 16 1/2 17 17 1/4 17 3/4 ins) NOTE: This pattern does not include seam allowance. See the instructions for more information.

Step 1 — Preparations



This pattern is printed on 8.5 × 11 sheets of plain paper. Do not scale or center pages before printing. Wait until all sheets are printed out before beginning to tape them together. **Do not cut out pattern pieces yet**— Arrange the sheets on a large, hard, flat surface so that they fit together, matching up like numbers and letters (i.e. 6A to 6A). To tape pattern together, fold under the margin of one piece (6A) and tape right against the line of it's matching number/letter (6A).

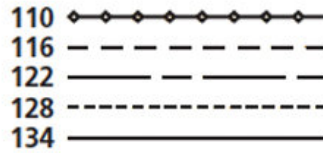
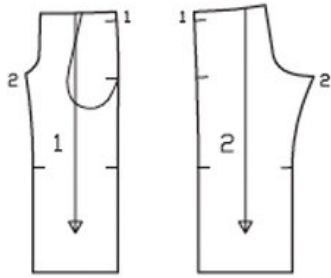
Trace the pattern pieces from the pattern sheet following the lines and markings for the correct size and the correct style (141). (This pattern also includes pattern pieces, lines and markings for style 140 that should be ignored.) Trace the pocket piece from piece 1 as a separate pattern piece it is the same for all sizes.

burda style magazine pattern do not have seam allowance included.

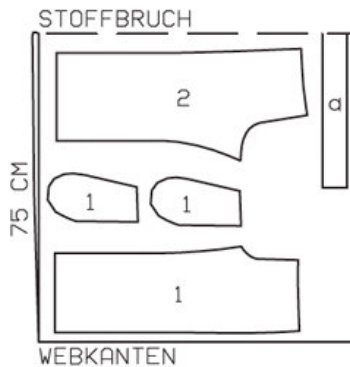
Seam and hem allowances to be added: Seams and edges 1.5 cm (5/8 in), hem 4 cm (15/8 ins).

Step 2 — Cutting Out

Pattern pieces 1 to 2



Cut the pieces as in this diagram with a fabric width of 150 cm



Stoffbruch = Fabric Fold
Webkanten = Selvage

Linen:

- 1 front trouser piece 2x
- pocket piece 4x
- 2 back trouser piece 2x

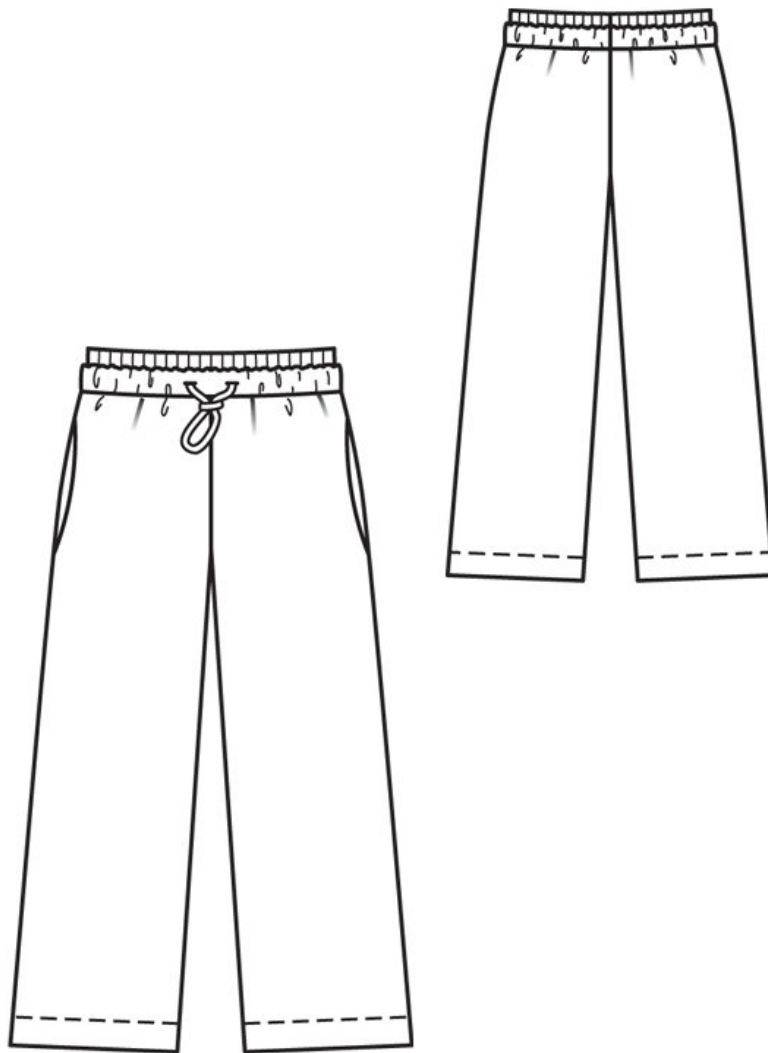
Also draft and cut the following pieces, not included in the pattern sheet

- a) waistband length: 67 67.5 70 72.5 75 cm (26 1/2 26 5/8 27 3/4 28 5/8 29 3/4 ins)
- width: 6 cm (2 1/2 ins), finished width 3 cm (1 1/4 ins)

Knit ribbing:

- inside waistband piece, length: 59 60 62 65 67 cm (23 1/4 23 3/4 24 1/2 25 1/4 26 1/2 ins)
- width: 10 cm (4 ins)

Step 3 — Sewing



Stitch side seams, not stitching across pocket openings.

Inseam pockets, Work from inside to pin pocket pieces to seam allowances of pocket opening edges, right sides facing. Stitch pockets in place, directly along marked seam lines. Above pocket openings, stitch pocket pieces in place close to seams. Press pocket pieces forward and stitch together. Baste upper pocket edges in place.

Stitch inside leg seams. Pull one trousers leg into the other, right sides facing. Stitch centre front and back seam as continuous seam. Press allowances to one side, from upper edges to start of curve. Do not press allowances flat along curve.

Pin waistband ends right sides together. Stitch seam on outer waistband half, leaving inside half open, to insert elastic. Press seam open. Mark centre front opposite seam. Fold waistband in half length wise, right side facing out. Press fold edge. Unfold waistband. On outer waist band half, work two 1.5 cm (5/8 in) long horizontal openings (buttonholes), 1.5 cm (5/8 in) to each side of centre front, to insert drawstrings. Stitch waistband edges together to upper trousers edges, matching waist band seam to centre back seam. Leave waistband lying on trousers for now. On inside waistband half, stitch edges together. Fold waistband in half,

wrong side in. Mark centre front opposite seam and mark side seams in between. Stretch inside waistband and stitch to upper trousers edge, over waistband. Turn waistband and inside waist band up, neaten allowances, and press down.

Topstitch trousers close to waistband join ing seam. Pull elastic into waistband. Sew ends of elastic together to a circumference of:

59 59 62 65 67 cm (23 1/4 23 1/4 24 1/2 25 1/4 26 1/2 ins)

Pull cord into waistband (through openings), using a safety pin as bodkin. Sew cord ends together, pull to centre back seam, and sew in place.

Press hems to inside, turn in to a width of 3 cm (1 1/4 ins), and stitch.

BurdaStyle

Drawstring Pants 04/2012