

burda style magazine 1/2010 Tunic Top

By: burda style magazine

<http://www.burdastyle.com/projects/burda-style-magazine-12010-tu>

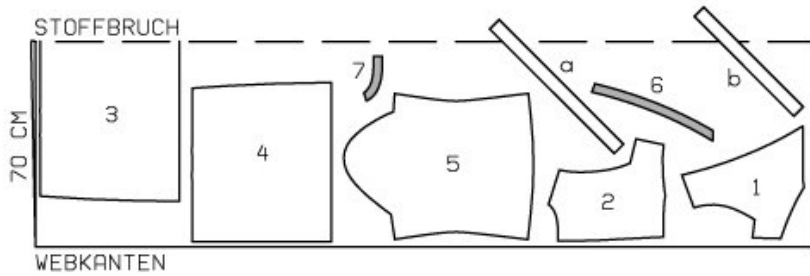


Tunic Top. For more information on this and other burda style magazine patterns, please see this dedicated blog post.

Materials

Chiffon

Step 1 — Preparation



134 44-52

Trace the pattern pieces from the pattern sheet. Follow lines and details for style 134.

The frill joining line on piece 1 is marked for size 44. For sizes 46 — 52, remark the line at the same width. The pleat arrows on piece 2 are marked for size 44. Remark the pleat arrows accordingly for the other sizes.

Seam and hem allowances:

Seams, edges and hem 1.5 cm (5/8 in), sleeve hems 3 cm (1 1/4 ins).

Step 2 — Cutting Out



1upper front 2x
 2upper back 2x
 3lower front, on a fold 1x

4lower back 2x
5sleeve 2x
6front neck facing 2x
7back neck facing 2x

a) right front neck frill, cut on bias, 60 cm (24 ins) long and 4.5 cm (17/8 ins) wide,
b) left front neck frill, cut on bias, 40 — 42 — 44 — 46 — 48 cm (153/4 — 161/2 — 171/4 — 18 — 19 ins) long, 4.5 cm (17/8 ins) wide.

Interfacing: Iron onto facing pieces.

Step 3 — Bust Darts, Pleats, Shoulder Seams

Stitch bust darts and press toward centre. Lay pleats in upper back pieces in arrow direction and baste. Stitch shoulder seams. Trim allowances to 5 mm (3/16 in) wide, neaten together and press onto back.

Step 4 — Shoulder Seams and Facings

Stitch shoulder seams on neck facings. Press seam allowances open. Pin facings right sides together with neck edges. Stitch along neck edges. Trim seam allowances. Turn facings to inside and baste.

Step 5 — Neck Frills

Round off one end (bottom end) of each neck frill by trimming in a shallow curve toward joining edge.

Step 6 — Zigzag Stitching of Neck Frills

Neaten rounded long edge and end of each neck frill with closely spaced zigzag stitching as follows: Press allowance to wrong side of fabric. Work from right side to stitch along fold edge at a small, closely spaced zigzag setting. Trim allowance on inside close to stitching.

Step 7 — Gathering Frills

Trim allowance on joining edge of each frill to 7 mm (1/4 in) wide. Gather frills. Baste right frill to joining line on right front, from lower front edge to marking. Baste left frill to joining line on left front, from shoulder seam to marking.

Step 8 — Petersham Ribbon

Pin petersham ribbon to neck edges of front and back pieces, 2 cm (3/4 in) from neck edges, catching frills in front. Edgestitch ribbon in place.

Step 9 — Stitching Right and Left Fronts

Lay upper right front on upper left front, matching centres (wrong side facing right side), and baste lower edges together. Stitch right front to left front, along stitching line of petersham ribbon.

Step 10 — Stitching Side Seams on Upper Pieces

Stitch side seams on upper pieces

Step 11 — Pleats

Lay pleats in lower front and back pieces in arrow direction and baste. Seam allowances of zip opening edges extend at back edges. Stitch side seams.

Step 12 — Stitching Front and Back Pieces

Stitch upper front and back pieces to lower pieces. Press seam allowances up.

Step 13 — Zipper

Sew invisible zip to back opening edges. Turn in top ends of zip tapes and sew in place. Stitch centre back seam from lower edge to zip.

Step 14 — Sleeve Seams

Stitch sleeve seams. Press sleeve hem allowances to inside, turn in and stitch as marked, to form elastic casing. Leave a section of seam open to insert elastic. Insert elastic and sew ends together for a circumference of 24 — 24 — 25 — 25 — 26 cm (9 1/2 — 9 1/2 — 10 — 10 — 10 1/4 ins). Sew opening closed.

Step 15 — Sleeve Caps

Ease sleeve caps and stitch to front and back edges of armholes, from corner to corner. Clip seam allowances into corners. Stitch remainder of sleeve inset seams from corner to corner. Clip seam allowance of front and back of dress into corners.

Step 16 — Hem

Lay hem allowance to inside, turn half in and press. Stitch hem.

BurdaStyle

burda style magazine 1/2010 Tunic Top