

Jochen

By: burdastyle

<http://www.burdastyle.com/projects/jochen>



Yes, finally, just like you've all been asking for, we have a great pair of men's slacks! These pants are classic and timeless, but leave plenty of opportunity to be creative. Perhaps try some fun loud fabric, add some embellishment, or try turning them into shorts. Whatever fabric you choose, or whichever leg you put in first, these are great pants!!

Materials

dark gray gabardine, buttons, interfacing, zipper

Step 1

burda Download-Pattern pants 6014 – Instructions



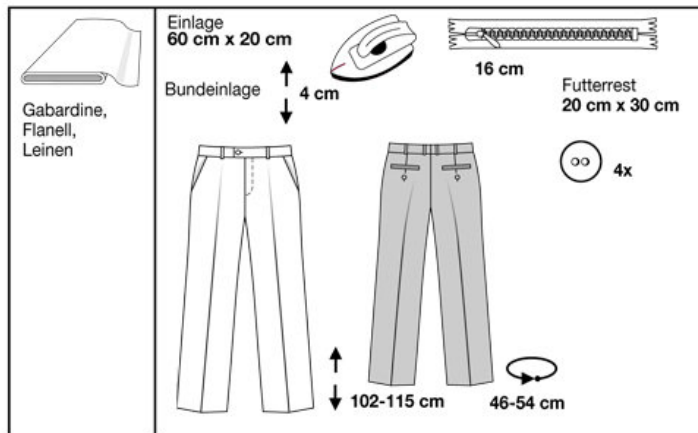
mittel

körpernah

burda sizes		45 ins / 114 cm									55 ins / 140 cm								
		44	46	48	50	52	54	56	58	60	44	46	48	50	52	54	56	58	60
yds		2 1/8	2 1/8	3	3	3	3	3	3 1/8	3 1/8	1 1/4	1 1/4	2 1/2	2 1/2	2 1/2	2 1/2	2 1/4	2 1/4	
m		2.10	2.10	2.70	2.70	2.70	2.70	2.70	2.75	2.75	1.60	1.60	2.15	2.15	2.15	2.20	2.20	2.45	2.45
		*	*	*	*	*	*	*	*	*	→	→	→	→	→	→	→	→	→

→ with nap

★ without nap



- 1 Front pant piece 2x
- 2 Pocket pouch 2x
- 3 Hip yoke piece 2x
- 4 Back pant piece 2x
- 5 Fly underlap 3x
- 6 Waistband 2x
- 7 Lining for pocket pouch 2x
- 8 Pocket pouch 2x
- 9 Piping 4x
- 10 Loop 1x

Fabrics: Gabardine, flannel, linen

Step 2



The patterns can be printed out at the copy shop. If you decide to print them at home, follow the instructions: Paper cut for ANSI A (German DIN A4) prints: The patterns are printed out on 35 sheets with a thin frame. Wait until all sheets are printed out. Arrange the sheets so that they fit together (see additional page with the overview of the prints). Fold the single sheets on the upper and right edge along the thin frame lines. Begin with the left lower sheet and then tape the frame lines together precisely.

Step 3



ADJUST PATTERN PIECES

Select your size according to the Burda-dimension table: dresses, blouses, jackets and coats according to the bust size, trousers and skirts according to the hip width. If necessary, change the pattern to fit your measurements if they deviate from the Burda-size chart. Cut out the pattern according to your size (a).

Refer to our 'Adjust patterns for mixed sizes' technique

Size 36 (EU 46) to 50 (EU 60)

On piece 1, mark the stitch line for the zipper so that it is in the same length to the front center as it is to the slit sign as for size 34 (EU 44).

LENGTHENING OR SHORTENING THE PATTERN PIECES

Our pattern is calculated for a height of 5' 6" (168 cm). If you are taller or shorter, you can adjust the pattern pieces along the lines marked "lengthen or shorten here". In this way the proper fit is maintained.

Always adjust all patterns pieces along the same line to the same degree (b).

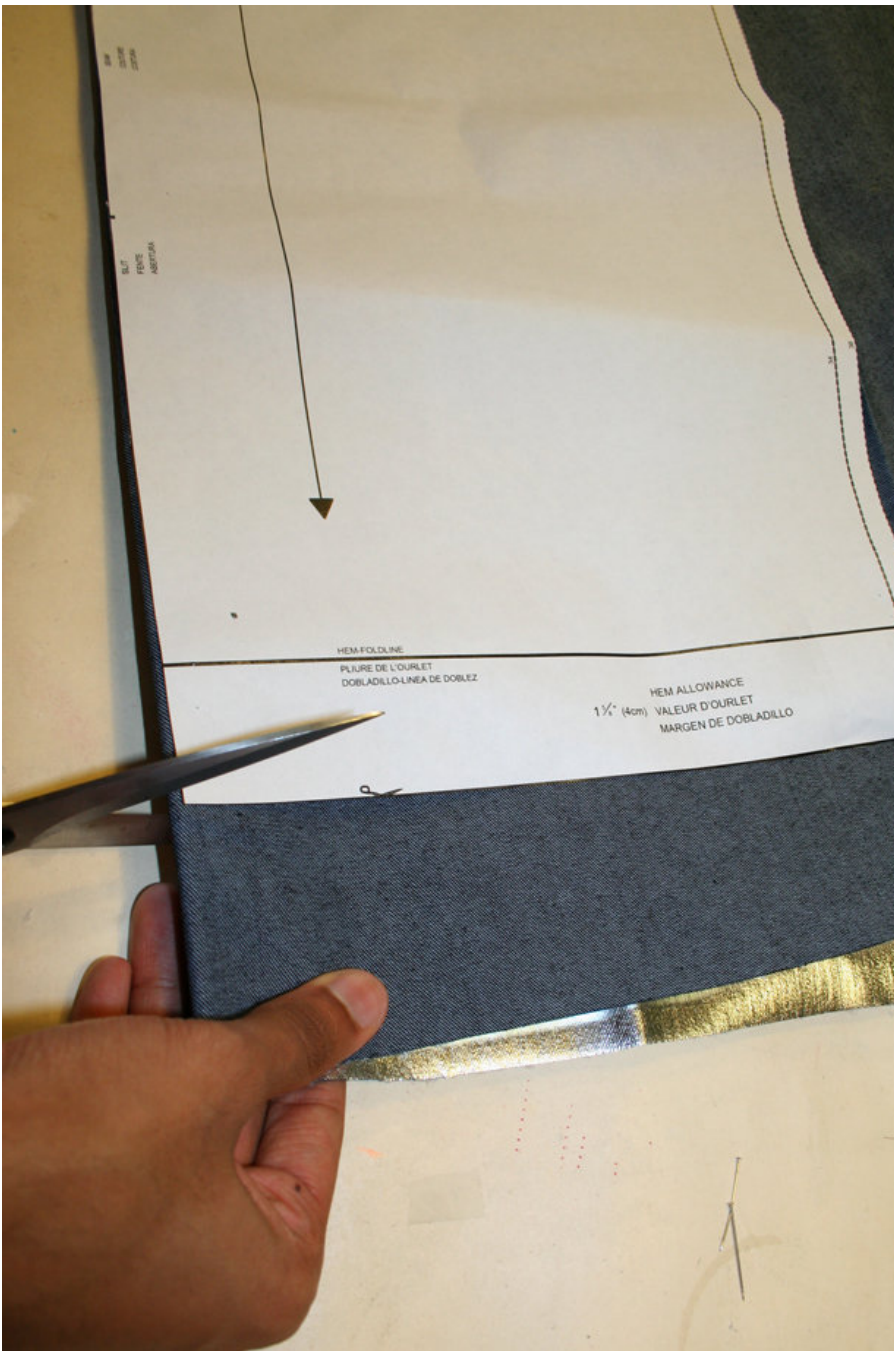
How to lengthen and shorten pattern pieces:

Cut the pattern pieces along the marked lines.

To lengthen, slide the two halves of the pattern piece as far apart as necessary.

To shorten, overlap the two halves of the pattern piece as far as necessary. Blend the side edges ©.

Step 4



CUTTING OUT

FOLD (â' â' â' â') means: here is the center of a pattern piece but never a cut edge or a seam. The piece should be cut double, with the fold line forming the center line. Pattern pieces that are outlined with a broken line in the cutting diagrams are to be placed face down on the fabric. The cutting diagrams on the pattern sheet show how the pattern pieces should be placed on the fabric (a).

The cutting diagrams show the placement of the pattern on the fabric.

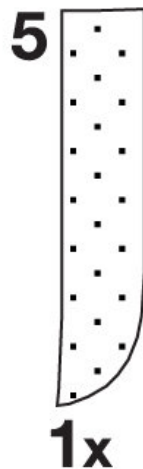
Lining remnant

Cut the pocket pouches (piece 7) from the lining remnant. For a single layer of fabric, pin the pattern pieces to the right side of the fabric. For double layers of fabric, the right sides are facing and the pattern pieces are pinned to the wrong side. The pattern pieces that are shown in the cutting diagram, extending over the fold of

the fabric, should be cut last from a single layer of fabric (b).

Step 5

INTERFACING



SEAM AND HEMLINE ALLOWANCES are included on an average:

1 $\frac{1}{2}$ ' (4 cm) for the hemline, $\frac{5}{8}$ ' (1.5 cm) for all edges and stitches. Using BURDA copying paper, transfer the lines and signs of the pattern onto the left fabric side. Instructions can be found in the packaging.

Facing

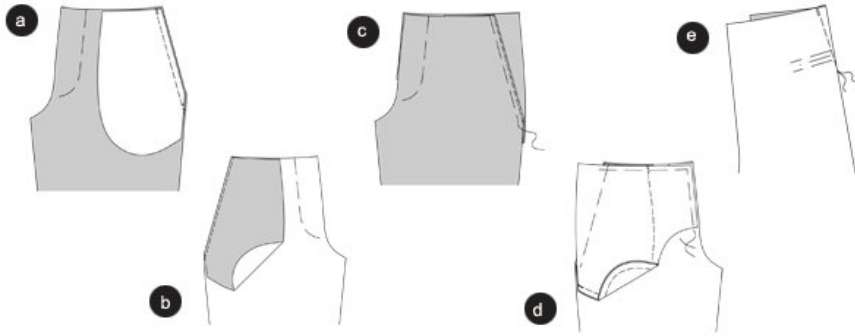
Cut out the facing according to the drawing and press it onto the wrong side of the fabric. Transfer the pattern outlines onto the facing.

Sewing

While sewing, the right fabric sides are facing.

Transfer all lines of the pattern onto the right fabric side using basting stitches

Step 6



PANTS

Press the crease as marked into the front piece of the pants

Hip yoke pockets

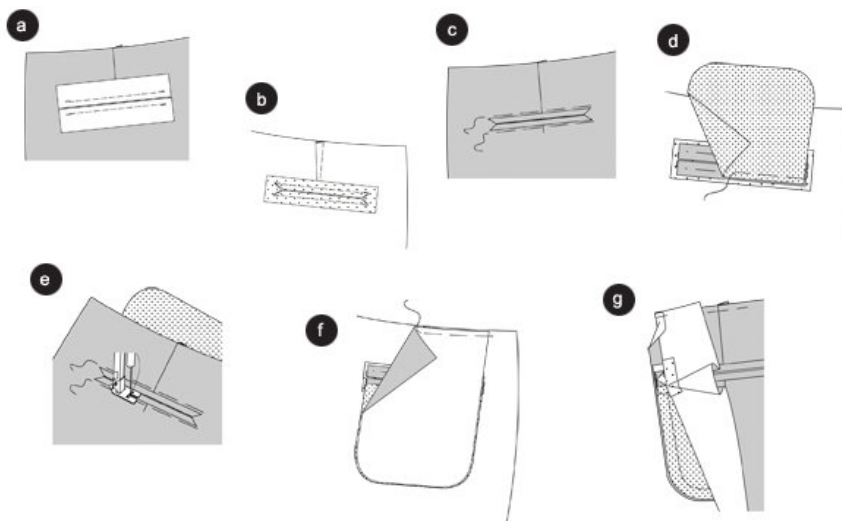
Position the pocket pouch onto the front pant piece, right sides facing. Pin the pocket opening edges (seam 1), stitch. Trim allowances. Fold the pocket pouches to the inside, pin (a). Press the edge and topstitch narrowly (b).

Pin the front pant piece onto the hip yoke piece, in such a way that the pocket opening meets the marked line. The right fabric sides of the pocket pouch and the hip yoke are facing. Baste the pocket openings ©.

Baste the pocket pouches onto the hip yoke piece, without enclosing the pant piece. Stitch. Neaten the allowances together. Baste the side, the top and the front edges of the hip yoke piece onto the front pant piece (d).

Pin the darts of the back pant piece, and stitch to a point. Knot the threads. Press the darts towards the back center (e).

Step 7



Piping pockets / back pant pieces

For sizes 36 (EU 46) to size 50 (EU 60) mark the pocket lines onto the back pant pieces according to the marked ends as shown at size 34 (EU 44). Mark the cut line $\hat{A}1\hat{2}$ ' (1 cm) shorter in length. Transfer the lines onto the right fabric side using basting stitches.

Press the interfacing strips, approximately $1\hat{A}1\hat{2}$ ' (4 cm) wide and $6\hat{A}1\hat{2}$ ' (16 cm) long, on the wrong side of the fabric of the back pant pieces (see drawing 6).

Pin the interfacing strips onto both sides of the cut line of the back pant pieces, then topstitch $\hat{A}1\hat{4}$ ' (7 cm) wide. Secure seam ends (a).

Cut the pant pieces between the stitch lines along the cut marking. Cut to an angle close to the last basting stitch so that little triangles emerge. Do not snip in the interfacing strips. Press the interfacing strips over the seam (b).

Fold the piping to the inside and pin them on the right side so that they are equally wide and fill out the cut. Press ©.

Pin the lining pocket pouch (piece 7) on the wrong side of the fabric so that the straight edges are positioned above the seam of the lower piping. (d)

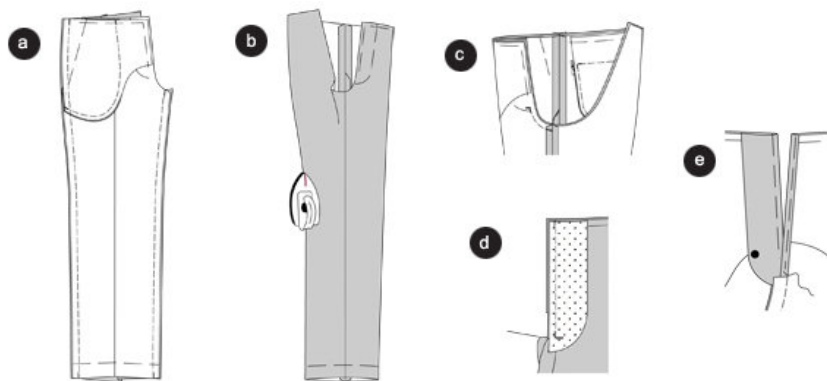
From the right side, stitch along the seam of the lower piping, thereby topstitching the pocket pouch. Press the pocket pouch towards the bottom (e).

Work BUTTONHOLES into the back pant pieces in the same place to the pocket as for size 34 (EU 44); thereby catching the pocket pouch lining.

Pin the pocket pouch on the top pant edge so that the lower and side edges are positioned together. From the right side, stitch along the seam of the top piping; thereby catching the pocket pouch (f)

Fold the little triangles at the snipped ends to the inside. Pin the pocket pouches together and stitch, thereby stitching over triangles (g).

Step 8



Side seams / inner pant leg seams

Position the front pant pieces on the back pant pieces, right sides facing. Baste the side seams (seam 2). Baste

the inner pant leg seams (seam 3). Stitch the seams. Trim the allowances and press apart (a).

Pleat

Fold the pant legs lengthwise in such a way that the side seams meet the inner pant leg seams. Press a pleat onto the pant (b).

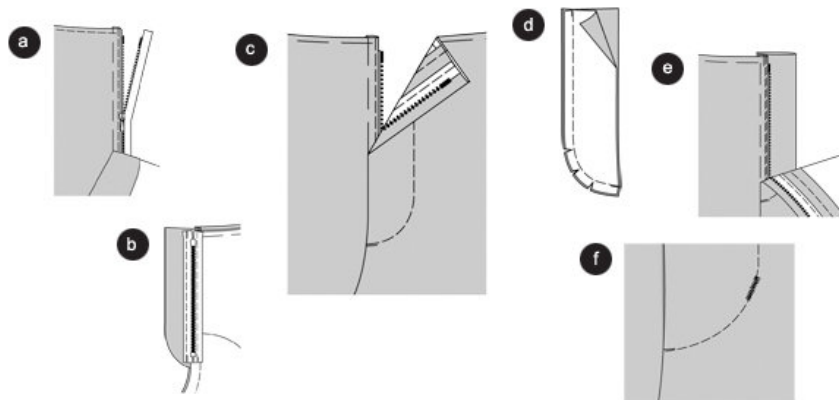
Front center seam

Fold one pant leg inside out. Put one pant leg inside the other, right sides facing. Stitch the center seam from the opening sign to the inner pant leg seams. Secure seam ends. Trim allowances ©.

Pin an underlap (with interfacing) as FACING on the left front pant edge. Stitch the facing from the top down to the opening sign. Secure seam ends. Trim allowances. Fold the facing to the inside, press. Neaten facing (d).

16 Use a $\frac{1}{4}$ " (0.7 cm) seam allowance for the right front pant piece UNDERLAP for $\frac{1}{4}$ " (0.7 cm). Snip in the allowance at the opening sign. Fold and pin the allowance. Press (e).

Step 9



Pin the right opening edge to the zipper strip, the edge meeting the zipper teeth. Stitch (a).

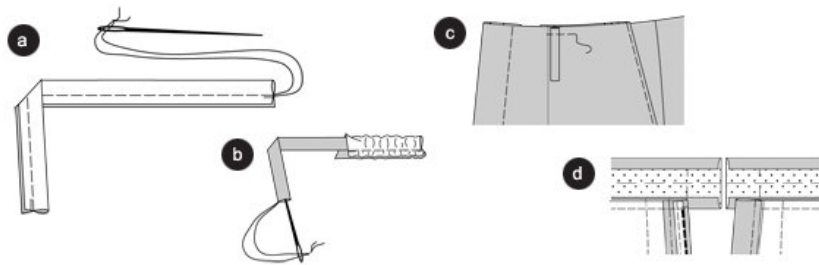
Close the zipper. The centers of the opening meet, pin the opening. Pin the left zipper strip on the facing and stitch: without catching the front pant piece (b). From the right pant side, stitch the left opening edge along the marked stitch line, thereby catching the facing ©.

Position underlap pieces together, stitch the edges according to the drawing. Trim allowances, snip in. Turn the underlap. Pin the edges, press. Pin the raw edges and neaten (d).

Pin the underlap under the right opening edge in such a way that the neaten even edge is positioned under the zipper strip. Stitch the underlap on the zipper (e).

Close the opening. Stitch along the zipper stitch line, approximately $\frac{1}{2}$ " (1 cm) wide, using a narrow zig-zag stitch, catching the underlap (f).

Step 10



Loops

Fold the strips lengthwise, wrong side out. Stitch $\hat{A}1/2\hat{A}$ ' (1 cm) wide along the fold line. Trim allowances.

Thread

the needle and knot. Move the needle through the tube (22a). Cut the strip into 6 equally long lengths. Neaten the ends (a).

Pin the loops on the top pant edge; in the front positioned above the pleats, and in the back above the darts, approximately $1\hat{A}1/2\hat{A}$ ' (3 cm) on both sides of the back center (b).

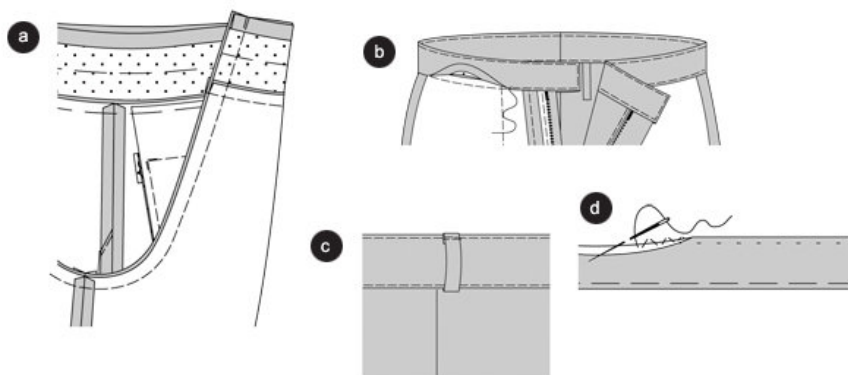
Waistband

Press WAISTBAND INTERFACING on the wrong side of the waistband.

Pin the waistband pieces, right sides facing and centers meeting, on the top pant edges (seam 4). Stitch, catching the loops. Trim allowances and press into the waistband. Press the allowances of the other waistband edge to the inside ©.

Fold the waistband along the fold line, wrong side out. Position and stitch the narrow front edges together; to the right continuing to the underlap. Trim allowances, cut the corners at an angle (d).

Step 11



Center back seam

Pin the center back seam, stitch. Trim allowances and press apart from the top to the beginning of the curve

(a).

Turn the waistband inside along the FOLD LINE. Pin the edge, press. Pin the inner waist on the seam line.

Topstitch

the waistband edges narrowly, thereby topstitching the inner half (b).

Turn the belt loops to the top, fold and stitch narrowly onto the upper waistband. Incorporate a BUTTON $\frac{1}{2}$ " (1 cm) next to the front waistband. Hand sew the BUTTONS accordingly onto the outside of the right waistband, onto the inside of the left waistband. Hand sew the BUTTONS for the pockets onto the pocket pouches, thereby catching little fabric pieces on the inside for extra support ©.

Hemline

Neaten the hemline, fold and pin, then press. Sew the hemline by hand (d).

BurdaStyle

Jochen