

Easy Sleeve Placket

By: DanaRose84

<http://www.burdastyle.com/techniques/easy-sleeve-placket--2>

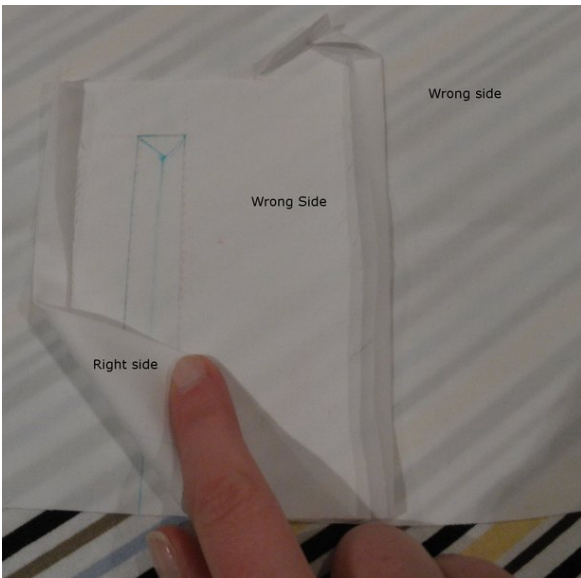


Here's a tutorial for the step-by-step construction of a placket for a sleeve vent, including how to draft the pattern piece. I used BurdaStyle pattern 04/2010 Long Sleeve Blouse #114, which doesn't include a placket for the sleeve. I was surprised at how easy it was. This tutorial is easily adaptable to any size placket.

Step 1 — Draft placket pattern piece

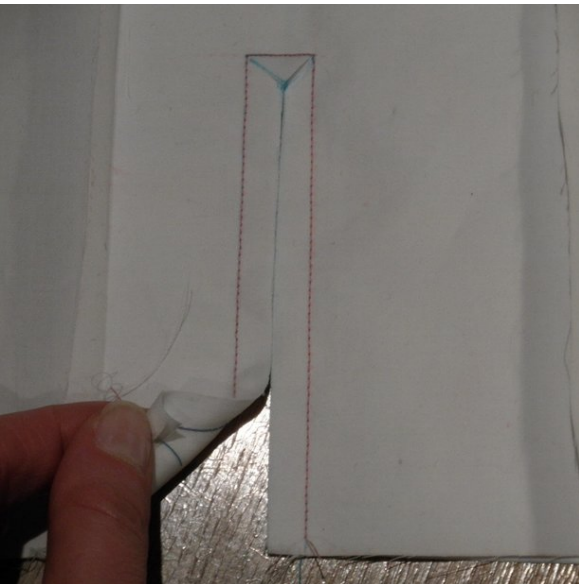
If your pattern includes a placket piece you can skip this step, otherwise follow the instructions of the video.

Step 2 — Prepare to sew



Fold the sides and the triangular bit at the top of the placket piece 1/4" to the wrong side and iron. Place the RIGHT side of the placket on the WRONG side of sleeve pattern piece, lining up the cutting lines and pin in place.

Step 3 — Stitch and cut



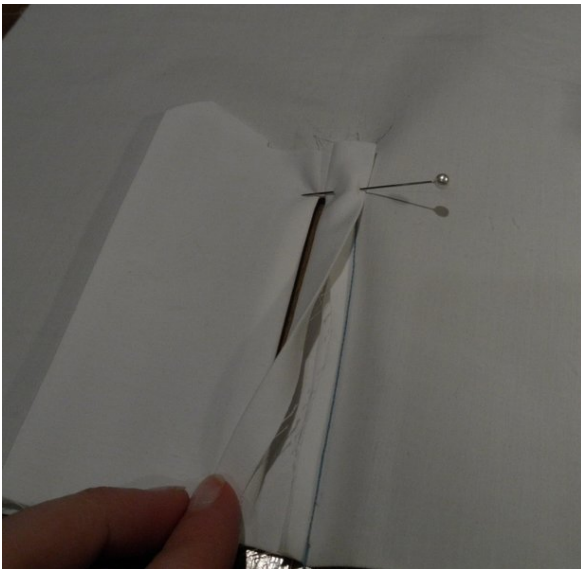
Sew along the stitching line. Use a short stitch length in the corners for accuracy. Cut most of the way up the cutting line and into the corners. Cut carefully and as close into the corners as possible without slicing through the thread.

Step 4 — Press and turn



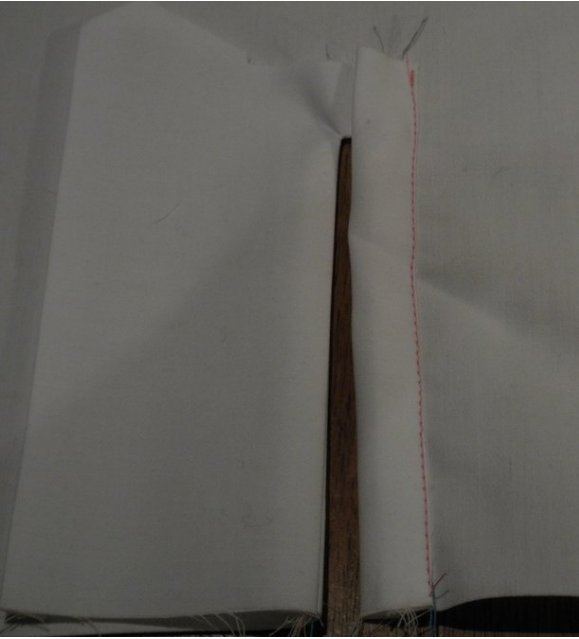
Press the seams open and turn the placket to the right side of the sleeve, pressing again to make the opening nice and crisp.

Step 5 — Fold and pin



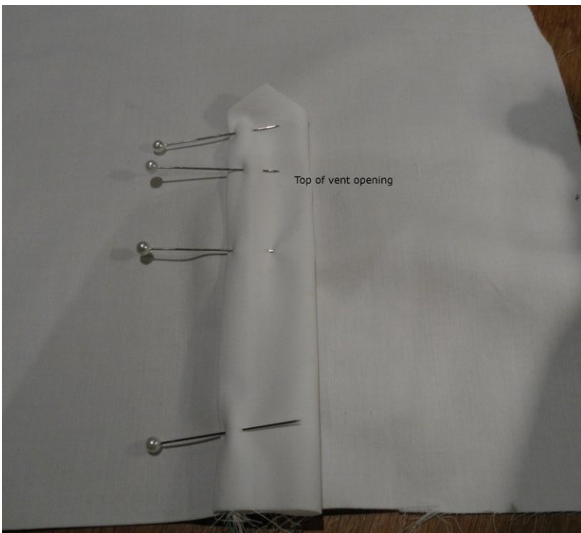
Fold the shorter side into the vent so that the folded edge just covers the stitching line, with the raw edge enclosed and pin in place.

Step 6 — Topstitch



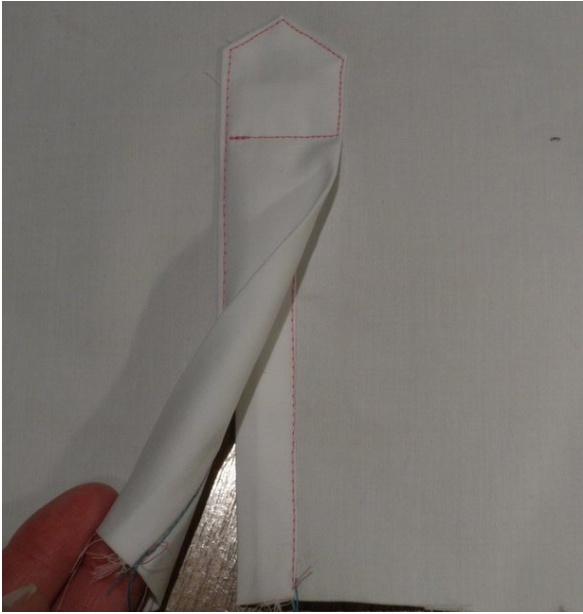
Topstitch. This is where an edge stitch foot would come in really handy.

Step 7 — Fold placket



Fold the larger side of the placket in the same fashion, with the folded edge just covering the stitches and the placket covering the vent and the other half of the placket, the raw edges enclosed. Pin in place, including a pin marking the top of the vent opening.

Step 8 — Topstitch



Topstitch the side and top edge of the placket, partway down the other side and back across the placket, vent above the vent opening. Use an edge stitching foot if you have one. Press

BurdaStyle

Easy Sleeve Placket