

01/2011 Long harem pants

By: burda style magazine

<http://www.burdastyle.com/projects/012011-long-harem-pants>



Long harem pants burda style magazine patterns FAQ

Materials

jersey

Step 1 — Preparation

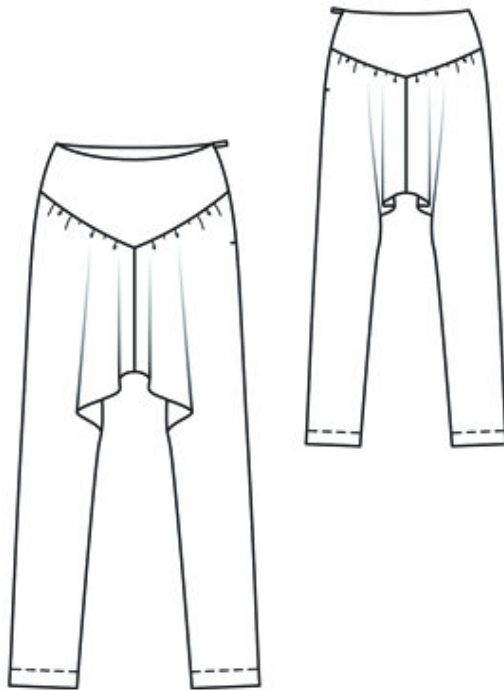
Größen, Tailles, Sizes						2		3		4		
1	N		L		K		Oberweite Tour de poitrine Bust		Tailleweite Tour des taille Waist		Hüftweite Tour des hanches Hip	
	5'6" 168 cm		5'9" 176 cm		5'3" 160 cm		ins	cm	ins	cm	ins	cm
	US	Eur.	US	Eur.	US	Eur.						
	6	32	6	64	6	16	30	76	23	58	32 ½	82
	8	34	8	68	8	17	31 ½	80	24 ½	62	34	86
	10	36	10	72	10	18	33	84	26	66	35 ½	90
	12	38	12	76	12	19	34 ¾	88	27 ¾	70	37	94
	14	40	14	80	14	20	36 ¾	92	29 ¾	74	38 ¾	98
	16	42	16	84	16	21	37 ¾	96	30 ¾	78	40 ¾	102
	18	44	18	88	18	22	39 ½	100	32 ½	82	41 ¾	106
	20	46	20	92	20	23	41	104	34	86	43 ½	110
	22	48	22	96	22	24	43 ½	110	36 ¾	92	45 ¾	116
	24	50	24	100	24	25	45 ¾	116	38 ¾	98	48	122
	26	52	26	104	26	26	48	122	41	104	50 ¾	128
	28	54	28	108	28	27	50 ½	128	43 ½	110	52 ¾	134
	30	56	30	112	30	28	52 ¾	134	45 ¾	116	55 ¾	140
	32	58	32	116	32	29	55 ¾	140	48	122	57 ¾	146
	34	60	34	120	34	30	57 ¾	146	50 ¾	128	60	152

Trace the pattern pieces from the pattern sheet. Note different hem lines for views A, B, and C. The asterisks marked on pieces 1 and 2 are for size 34 only. For the other sizes, mark the asterisks the same distance from centre seam line and from side seam line as for size 34.

Seam and hem allowances:

Seams and edges 1.5 cm (5/8 in). View C: hem 4 cm (15/8 ins).

Step 2 — Cutting out



1 front trouser piece 2x

2 back trouser piece 2x

3 front yoke, on a fold 2x

4 back yoke, on a fold 2x

Interfacing: See pattern layout. Interface outer yoke pieces.

Step 3 — Front and back

Stitch front and back centre seams, beginning and ending each seam at marked seam line on upper edge.

Press seam allowances open.

Step 4 — Yoke

Gather upper edges of trouser pieces between asterisks. Stitch interfaced outer yoke pieces to upper edge of trouser pieces. Press seam allowances onto yokes

Step 5 — Zip

Stitch right side seam. Sew invisible zip to left opening edges. Stitch left side seam, up to zip. Stitch inside leg seams as continuous seam.

Step 6 — Yoke and facings

Stitch right side seam of inside yoke piece with no interfacing, as mirror image of seam of trousers. Lay inside yoke on attached yoke, right sides facing, and pin upper edges together. At zip slit, turn inside yoke back, about 5 mm (3/16 in) before slit edge, and pin to upper edge. Turn allowances of trousers at slit edges to outside and pin to upper edge of trousers, over yoke. Stitch along upper edge of trousers. Turn allowances at slit edges to inside. Turn inside yoke up and stitch to seam allowances, as far as possible, close to seam. Turn inside yoke to inside. Baste over joining seam, without turning edge under, and sew to zip tapes. Work from right side of garment to stitch along line of joining seam.

Step 7 — Hem allowance

Turn hem allowances to inside. Stitch hems from right side, using the twin machine needle

BurdaStyle

01/2011 Long harem pants