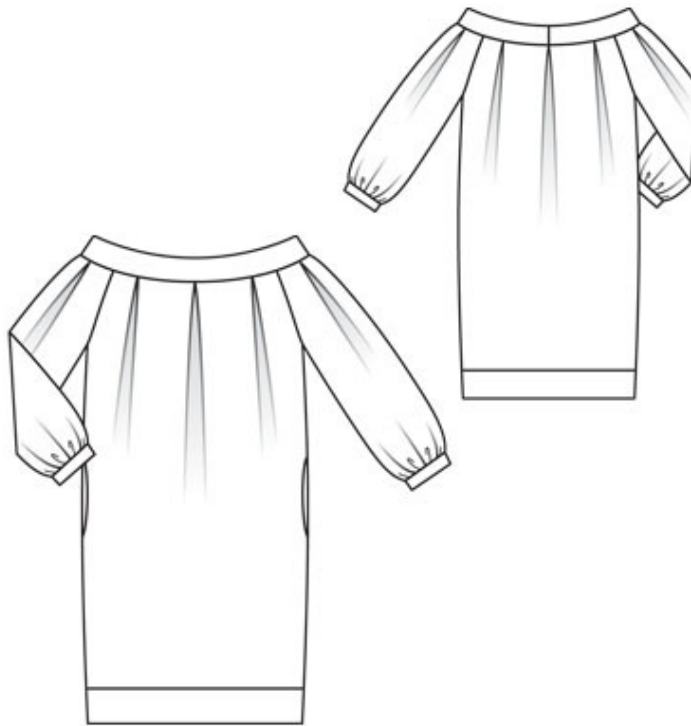


07/2010 Low shoulder puff dress

By: burda style magazine

<http://www.burdastyle.com/projects/072010-low-shoulder-puff-dress>



Low shoulder puff dress burda style magazine patterns FAQ

Materials

chintz

Step 1 — Preparation

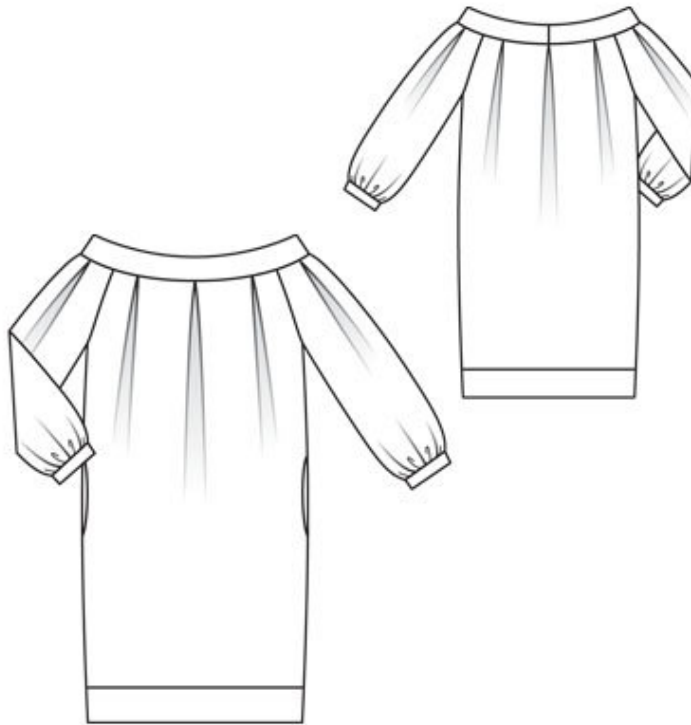
Trace the pattern pieces from the pattern sheet. Trace the pocket piece from piece 21 as a separate pattern piece it is the same for all sizes.

The pleat arrows on pieces 21, 22 and 23 are marked for size 44. Mark the pleat arrows for the other sizes accordingly.

Seam and hem allowances:

Seams and edges 1.5 cm (5/8 in).

Step 2 — Cutting out



21front, on a fold 1x

22back, on a fold 1x

23sleeve 2x

24neck band, on a fold 2x

a) 2 sleeve bands, 28 — 29 — 30 — 31.5 — 32.5 cm (11 1/8 — 11 1/2 — 12 — 12 1/2 — 12 7/8 ins) long, 4 cm (1 1/2 ins) wide, finished width 2 cm (3/4 in),

b) hem band, 110 — 114 — 120 — 126 — 132 cm (43 1/2 — 45 — 47 1/4 — 49 3/4 — 52 ins) long, 12 cm (4 3/4 ins) wide, finished width 6 cm (2 3/8 ins).

Interfacing: See pattern layout. Interface outer neck band.

Step 3 — Side seams

Stitch side seams, but do not stitch across pocket openings.

Step 4 — In-seam pockets

Pin pocket pieces right sides together with seam allowances of pocket opening edges and stitch in place, directly along marked seam lines. Press pocket pieces forward and stitch together.

Step 5 — Sleeve seams

Stitch sleeve seams. Gather lower edges of sleeves to fit sleeve bands.

Step 6 — Sleeves

Joins ends of each sleeve band to a ring. Stitch sleeve bands to lower edges of sleeves. Press seam allowances of joining seams and of other long edges of sleeve bands onto sleeve bands. Fold sleeve bands half to inside and baste to joining seams. Topstitch sleeve bands close to joining seams.

Step 7 — Arms

Stitch sleeves to armhole edges. Press allowances toward sleeves.

Step 8 — Pleats and neck

Fold pleats in arrow direction and baste. Stitch centre back seam of neck band. Stitch outer neck band to neck edge of dress. Press seam allowances onto band. Lay inside band right sides together with attached band and stitch along neck edge. Turn band right side out. Turn in inside edge of band and baste to joining seam. Topstitch band close to joining seam.

Step 9 — Hem

Join ends of hem band to a ring. Stitch band to lower edge of dress, matching seam of band to one side seam. Press seam allowances onto band. Turn in inside edge of hem band and baste in place. Working from the outer side, topstitch close to joining seam.

BurdaStyle

07/2010 Low shoulder puff dress