

08/2010 Trousers with Zippers

By: burda style magazine

<http://www.burdastyle.com/projects/082010-trousers-with-zippers>

Trousers with Zippers burda style magazine patterns FAQ

Materials

stretch twill

Step 1 — Preparation

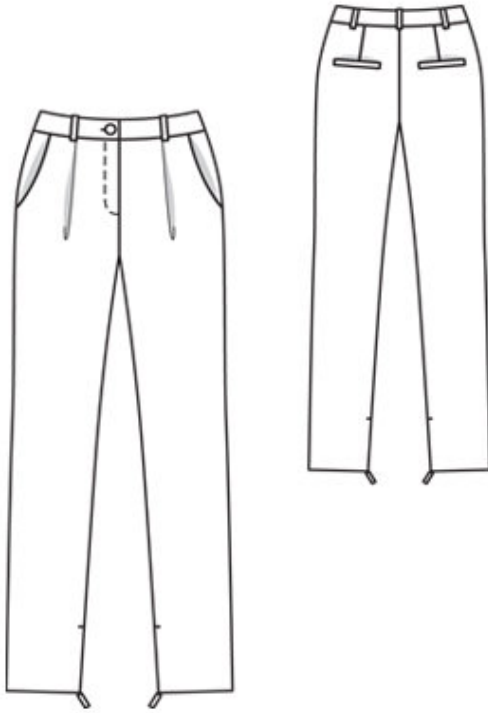
Trace the pattern pieces from the pattern sheet. Trace the pocket piece from piece 1 as a separate pattern piece. Lengthen piece 3 as indicated.

The stitching line at the zip opening is marked for size 36. For sizes 38 — 44, mark the stitching line the same distance from centre front as for size 36, noting length of opening.

Seam and hem allowances:

Seams and edges 1.5 cm (5/8 in), hem 4 cm (15/8 ins).

Step 2 — Cutting out



Stretch twill:

1 front trouser piece 2x

2 side hip yoke with

â— integrated pocket piece 2x

3 back trouser piece 2x

4 front waistband 4x

5 back waistband 4x

a) right facing piece, 15 â— 15 â— 15 â— 17 â— 17 cm (6 â— 6 â— 6 â— 63/4 â— 63/4 ins) long, 4 cm (15/8 ins) wide,

b) left underlap piece, 15 â— 15 â— 15 â— 17 â— 17 cm (6 â— 6 â— 6 â— 63/4 â— 63/4 ins) long, 7 cm (3 ins) wide, finished width 3.5 cm (11/2 ins),

c) 5 belt carriers, a total of 40 cm (16 ins) long, 4 cm (15/8 ins) wide (incl. allowance),

d) 2 bias binding strips (back pockets), 14 cm (51/2 ins) long, 4 cm (15/8 ins) wide (incl. allowance),

e) 2 pocket pieces (back pockets), 14 cm (51/2 ins) wide, 11 cm (43/8 ins) long (incl. allowance).

Lining:

pocket pieces (pieces 1 and e), twice each.

Interfacing: See pattern layout. Iron strips of interfacing, about 4 cm (15/8 ins) wide, to wrong side of back trouser pieces, over pocket markings.

Step 3 — Darts

Stitch back darts and press toward centre. Fold pleats in front trouser pieces in arrow direction and baste.

Step 4 — Hip yoke pockets

Stitch pocket pieces right sides together with pocket opening edges of front trouser pieces. Lay pocket pieces up and stitch to seam allowances, close to seam. Turn pocket pieces to inside. Pin pocket opening edges to side hip yokes, at abutting lines. Stitch pocket pieces together on inside. Baste pocket pieces to wrong sides of front trouser pieces.

Step 5 — Single-welt pockets

Sew single-welt pockets on back trouser pieces: Mark an abutting line for welt, 1 cm (3/8 in) from each welt joining line (= finished width of welt). Fold welt strips lengthwise, right side facing out, and press. Baste each doubled welt strip to welt joining line so that fold edge of welt meets abutting line and open long edges lie between pocket lines. Stitch welts in place along welt joining lines. Stitch fabric pocket pieces in place along pocket piece joining lines. Slash between lines of stitching and clip diagonally toward each last stitch — do not cut welts or pocket pieces. Lay welts into pocket openings and pull pocket pieces to inside. Stitch pocket lining pieces to seam allowances of welt joining seams. Pull small triangles on pocket opening ends to inside and stitch to welt and pocket pieces, from seam end to seam end.

Step 6 — Leg seams

Stitch inside leg seams, up to about 5 cm (2 ins) above slit mark. Stitch side seams. Stitch centre front seam, from slit mark to inside leg seam.

Step 7 — Zip opening

Stitch right facing piece right sides together with right edge of opening. Turn facing to inside and press edge. Press allowance on left edge of opening (underlap) to inside, 5 mm (3/16 in) before centre front. Stitch zip under edge, close to teeth. Pin opening closed, matching centre fronts. Stitch free zip tape to right facing, not catching trouser piece. Baste facing in place. Topstitch opening, from upper edge to 3 cm (1 1/4 ins) before the end, as marked. Fold underlap piece lengthwise and stitch across bottom end. Turn right side out. Lay underlap under left edge of opening and pin to allowance of opening edge. Stitch allowance of opening edge to underlap, close to zip joining seam. Close zip. Topstitch to end of opening, catching underlap.

Step 8 — Back seam

Stitch centre back seam.

Step 9 — Belt

Neaten lengthwise edges of strip for belt carriers and press to wrong side, 1.2 cm (1/2 in) wide. Topstitch strip close to edges. Cut into 5 equal pieces. Baste belt carriers to upper edge of trousers, placing one next to each pleat, in front, and over centre back seam and 2 cm (3/4 in) from each dart, in back.

Step 10 — Waistband

Stitch centre back seam and side seams of each waistband unit. Stitch outer waistband unit to upper edge of trousers, with right end of waistband extending from centre front and stitching left end of waistband to opening underlap. Press seam allowances onto waistband. Lay inside waistband unit right sides together with

attached waistband unit. Stitch across ends of waistband and along upper edge of waistband, stitching along centre front on right end of waistband. Trim seam allowances, trimming corners diagonally. Turn waistband right side out. Turn in inside edge of waistband and baste in place, about 4 cm (1 5/8 ins) long, then lay flat over joining seam. Working from outer side, stitch along joining seam, thereby catching inside edge of waistband. Work buttonhole in right end of waistband.

Step 11 — Belt carriers and waistband

Lay belt carriers up, turn ends in, and stitch to upper edge of waistband.

Step 12 — Zips

Sew invisible zips to inside edges of trouser legs, from hem line to slit mark. The zips should open from bottom to top. Stitch remaining inside leg seams to zip.

Step 13 — Hem allowance

Press hem allowances to inside and sew in place by hand.

BurdaStyle

08/2010 Trousers with Zippers