

12/2011 Leather top

By: burda style magazine

<http://www.burdastyle.com/projects/122011-leather-top>



Leather top burda style magazine patterns FAQ

Materials

Lamb nappa leather.

Step 1 — Preparation



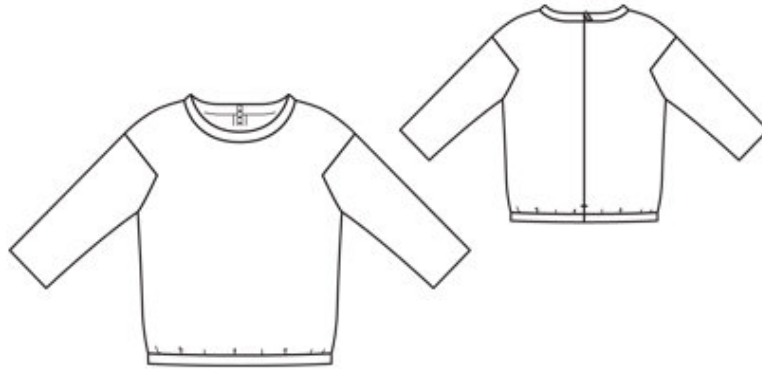
Paper cut for ANSI A (German DIN A4) prints:

This pattern is printed on 8.5 × 11 sheets of plain paper. Do not scale or center pages before printing. Wait until all sheets are printed out before beginning to tape them together. **Do not cut out pattern pieces yet**— Arrange the sheets on a large, hard, flat surface so that they fit together, matching up like numbers and letters (i.e. 6A to 6A). To tape pattern together, fold under the margin of one piece (6A) and tape right against the line of it's matching number/letter (6A).

burda style magazine pattern do not have seam allowance included.

Seam and hem allowances to be added: Seams and edges 1.5 cm (5/8 in).

Step 2 — Cutting out



21front, on a fold 1x

22back 2x

23sleeve 2x

â— hem band, 93 â— 97 â— 101 â— 105 â— 109 cm (363/4 â— 381/4 â— 393/4 â— 411/2
â— 43 ins) long, 5 cm (2 ins) wide, finished width 2.5 cm (1 in),
â— neck band, 59 â— 60.5 â— 62 â— 63 â— 64.5 cm (231/4 â— 237/8 â— 241/2 â— 243/4
â— 251/2 ins) long, 4 cm (1 1/2 ins) wide, finished width 2 cm (3/4 in).

Step 3 — Shoulder seams

Stitch shoulder seams (seam number 1). Spread seam allowances open and glue down (textile adhesive).

Step 4 — Neck

Fold neck band in half lengthwise and press, wrong side in. Unfold band again. Stitch outer half of band to neck edge. Turn seam allowances onto band.

Step 5 — Zip

Sew invisible zip to back slit edges, beginning at upper edge of band (pressed fold). Stitch the centre back seam from lower edge to zip

Step 6 — Neck band

Fold neck band in half to inside and lay inside edge flat over joining seam, without turning in. Topstitch band close to joining seam. On inside, trim allowance close to stitching.

Step 7 — Side seams

Stitch side seams and sleeve seams. Spread seam allowances open and glue down.

Step 8 — Setting in the sleeves

First pin sleeves right sides together with underarm edge, matching sleeve and side seams and matching seam marks (5) on sleeve and front. Pin sleeves in place, up to the corner. Stitch. Clip seam allowances of front and back into corners, close to each last stitch (11). Pin sleeve to upper sleeve attachment edge, from corner to corner, matching seam mark on sleeve to shoulder seam. Stitch front and back to sleeve, from corner to corner (12). Press seam allowances open above corners, do not press below corners. Neaten edges of seam allowances. Above corners, spread seam allowances open and glue down.

Step 9 — Hem

Turn sleeve hem allowances to inside and glue down.

Step 10 — Lower edges

Gather lower edge of garment to match hem band.

Step 11 — Hem band

Stitch ends of hem band together. Stitch hem band to lower edge of top, catching lower end of zip. Trim end of zip 1 cm (3/8 in) below joining seam. Turn seam allowances onto hem band. Fold hem band in half, with wrong side facing in, and press. Lay inside edge flat over joining seam not turned in. Topstitch hem band close to joining seam. On inside, trim allowance close to stitching.

BurdaStyle

12/2011 Leather top