

burda style magazine 03/2010 Short-sleeve Jacket

By: burda style magazine

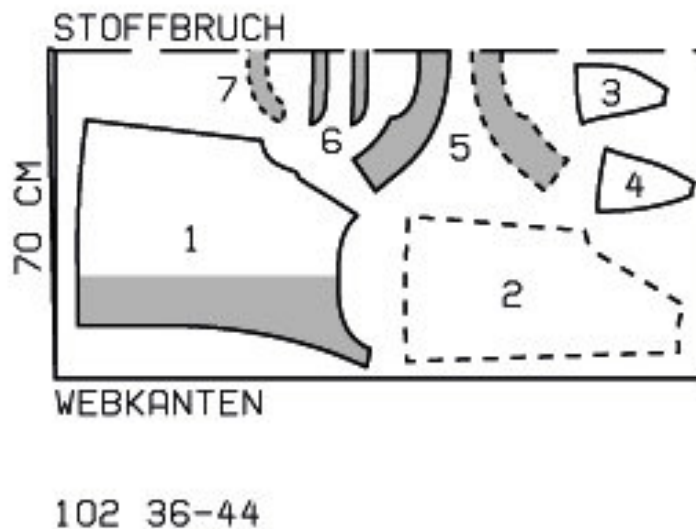
<http://www.burdastyle.com/projects/burda-style-magazine-032010-9>

Short-sleeve Jacket For more information on this and other burda style magazine patterns, please see this dedicated blog post.

Materials

Matelass

Step 1 — Preparation



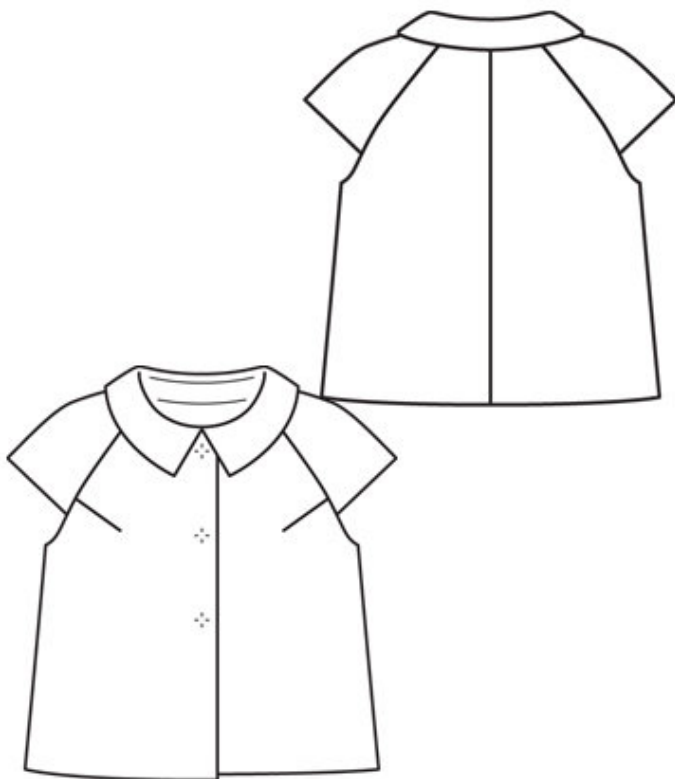
Trace the pattern pieces from the pattern sheet. Follow lines and details for size 102.

The snap fasteners on piece 1 are marked for size 36. For the other sizes, mark the top fastener the same distance from neck edge as for size 36. The bottom fastener is in the same place for all sizes. Centre the third fastener in between.

Seam and hem allowances:

Seams and edges 1.5 cm (5/8 in), hem 4 cm (15/8 ins), sleeve hems 3 cm (11/4 ins). Cut lining pieces with 1.5 cm (5/8 in) seam and hem allowances.

Step 2 — Cutting Out



Matelass:

1front 2x

2back 2x

3front sleeve 2x

4back sleeve 2x

5collar, on a fold 2x

6collar band, on a fold 2x

7back facing, on a fold 1x

Lining: pieces 1, 3 and 4 to lining line; piece 2 to lining line and at centre back with an ease pleat of about 2 cm (3/4 in).

Interfacing: See pattern layout. Also interface hem allowances.

Vilene Bias Tape: Iron onto edges of armholes.

Step 3 — Bust Darts

Stitch bust darts. Press darts up.

Step 4 — Centre Back Seam

Stitch centre back seam. Press seam allowances open.

Step 5 — Sleeves

Stitch top sleeve seams. Press seam hem allowances to inside and sew in place by hand. Stitch sleeve to front and back, above markings. Press seam allowances of sleeve joining seams onto fronts and back.

Step 6 — Collar

Unfold front self-facings and stitch to back facing. Stitch facings to neck edge, from front edge to marked centre front. Leave facings lying right sides together with coat for now. Stitch collar band pieces to collar pieces. Trim seam allowances and press open. Topstitch close to each side of seams. Stitch collar pieces right sides together along outer edges. Begin and end stitching exactly on seam of joining edge. Trim seam allowances. Turn collar right side out and press. Lay collar between coat and facing. Stitch undercollar to neck edge of coat and stitch top collar to facing. Press seam allowances open. Turn facing to inside. Pin collar joining seams together. Lay facing in back up again and stitch seam allowances together, close to collar joining seam. Lay facing down.

Step 7 — Stitching back lining and sleeve linings

Stitch allowances of centre seam on back lining together, 1 cm (3/8 in) from edge. For the ease pleat, stitch along centre back, about 5 cm (2 ins) at top and bottom, and baste in between. Press pleat to one side. Stitch darts in lining. Stitch seams of sleeve linings. Press lower edge of sleeves to inside, 2 cm (3/4 in) above marked hem line, and trim to a width of 1 cm (3/8 in). Stitch sleeve linings to front lining pieces and back lining.

Step 8 — Stitching lining right sides

Unfold facing at front edges of jacket and lay hem allowance down. Stitch lining right sides together with inside edge of jacket facing. Stitch lining right sides together with edges of armholes. Trim seam allowances. Lay lining up and stitch to allowances, close to seam. Turn facing and lining to inside and press edges.

Step 9 — Stitching outer fabric and lining

Lay front and back pieces right sides facing and lay lining up. Stitch side seams of outer fabric and lining as continuous seams. Press seam allowances open. Lay lining down again.

Step 10 — Sewing facings and lining in place

Lay hem allowance to inside and sew in place by hand. Turn in lining along lower edge of jacket. Press fold edge lightly, push up in a shallow curve, and pin to hem allowance. Sew facings and lining in place. Lay extra length of lining down and press lightly. Sew sleeve linings to hem.

Step 11 — Snaps

Cover snap fasteners with lining. Sew top halves of snaps to inside of right front as marked, taking even stitches and exiting needle on right side of fabric. Sew bottom halves of snaps to left front to match. Make a thread loop at top corner of right front. Sew button to left front to match loop.

BurdaStyle

burda style magazine 03/2010 Short-sleeve Jacket