

09/2011 Fur waistcoat

By: burda style magazine

<http://www.burdastyle.com/projects/092011-fur-waistcoat>



Fur waistcoat burda style magazine patterns FAQ

Materials

Fake fur

Step 1 — Preparation



Paper cut for ANSI A (German DIN A4) prints:

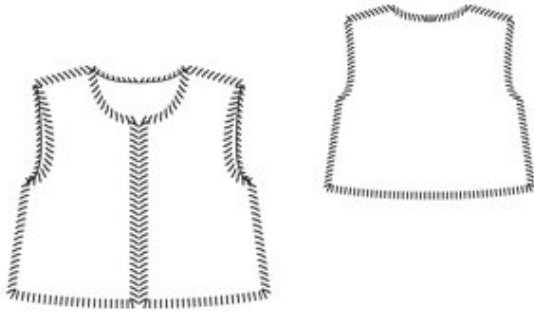
This pattern is printed on 8.5 × 11 sheets of plain paper. Do not scale or center pages before printing. Wait until all sheets are printed out before beginning to tape them together. **Do not cut out pattern pieces yet**— Arrange the sheets on a large, hard, flat surface so that they fit together, matching up like numbers and letters (i.e. 6A to 6A). To tape pattern together, fold under the margin of one piece (6A) and tape right against the line of it's matching number/letter (6A).

burda style magazine pattern do not have seam allowance included.

Seam and hem allowances to be added: Seams and edges 1.5 cm (5/8 in).

see example here: <http://www.burdastyle.com/projects/072011-jumpsuit/instructions/1>

Step 2 — Cutting out



Fake fur /lining:
1 front 2x
2 back, on a fold 1x

Step 3 — Shoulder seams

Stitch the shoulder seams on the waistcoat and on the lining.

Step 4 — Lining

Pin the lining right sides together with waistcoat. Stitch along front and back hem edges, front edges, neck edge, and armhole edges. Turn the waistcoat right side out by pushing the fronts back through the shoulder tunnels and out through an open side seam.

Step 5 — Side seams

Stitch side seams on outer fabric, also stitching a small amount of lining seams at top and bottom. Reach through an open lining seam to pull the other side seam of the lining. Stitch remainder of seam and push it back in place again. Sew up the opening in the other seam by hand.

BurdaStyle

09/2011 Fur waistcoat