

Button-Up Blouse with Gathers 04/2012

By: burda style magazine

<http://www.burdastyle.com/projects/button-up-blouse-with-gathers>



A girl's blouse complete with a button-up closure, collar and gathers. This loose fit blouse is perfect for the little girl who loves to play, and look cute at the same time. You could add sleeves, or even lengthen the hem for a shirt-dress ! We made ours in a stripe, but a floral would give this blouse a more girly feel.

Materials

Height 110, 116, 122, 128, 134 cm Back length 43 45 47 49 51 cm (17 17 3/4 18 1/2 19 1/4 20 1/4 ins)

NOTE: This pattern does not include seam allowance. See the sewing instructions for more information.

Step 1 — Preparations



This pattern is printed on 8.5 × 11 sheets of plain paper. Do not scale or center pages before printing. Wait until all sheets are printed out before beginning to tape them together. **Do not cut out pattern pieces yet**— Arrange the sheets on a large, hard, flat surface so that they fit together, matching up like numbers and letters (i.e. 6A to 6A). To tape pattern together, fold under the margin of one piece (6A) and tape right against the line of it's matching number/letter (6A).

Trace the pattern pieces from the pattern sheet following the lines and markings for the correct size and the correct style (145). (This pattern also includes pattern pieces, lines and markings for style 146 that should be ignored.)

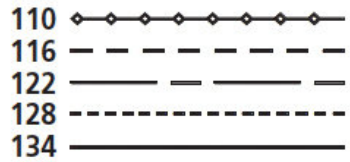
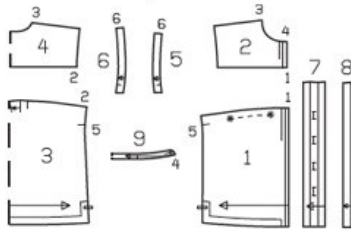
The hem facings on pieces 1 and 3 are marked for size 110 only. For the other sizes, mark the facings at the same width. Trace the hem facings from pieces 1 and 3 as separate pattern pieces. The pleat arrow on piece 3 is marked for size 110. For the other sizes, remark the pleat arrow accordingly.

The buttonholes on piece 7 are marked for size 110. For sizes 116-134, mark the top buttonhole the same distance from upper edge as for size 110. The bottom buttonhole is the same for all sizes. Space 2 2 3 3 more buttonholes evenly in between.

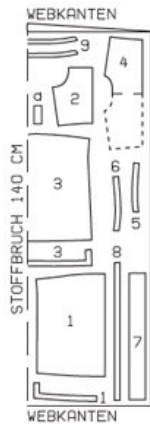
burda style magazine pattern do not have seam allowance included.
Seam and hem allowances to be added: Seams and edges 1.5 cm (5/8 in).

Step 2 — Cutting Out

Pattern pieces 1 to 8



Cut the pieces as in this diagram with a fabric width of 150 cm



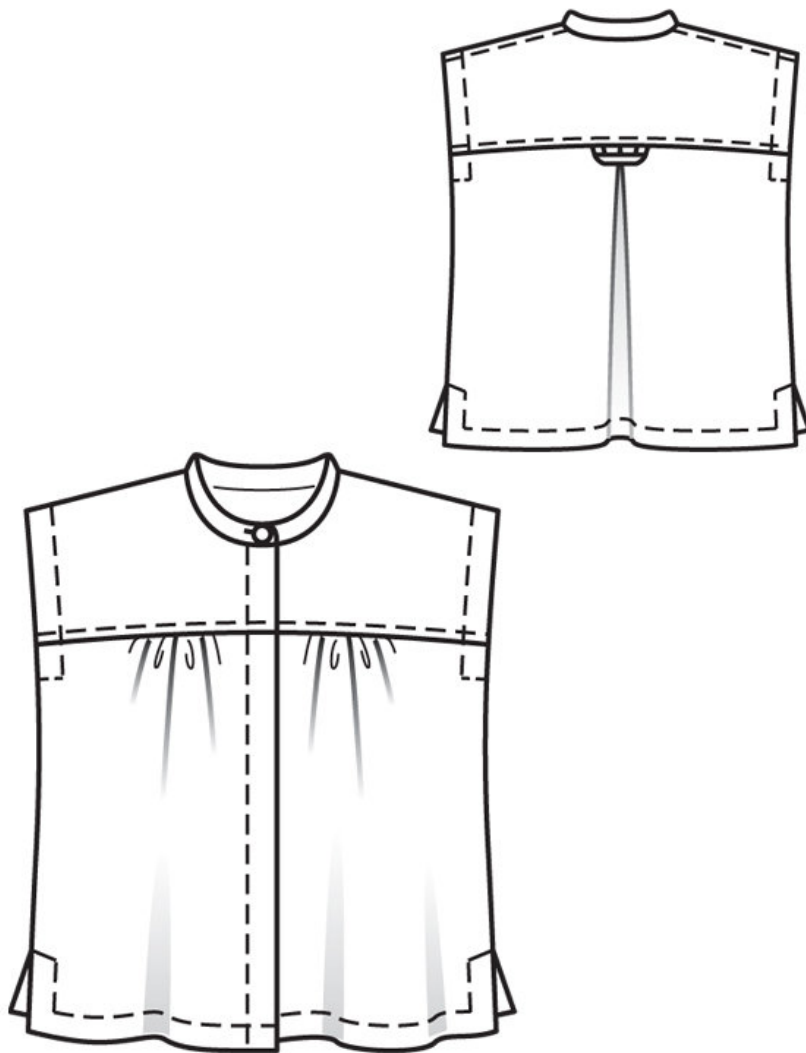
Stoffbruch = Fabric Fold
Webkanten = Selvage

- 1 front 2x
- front hem facing 2x
- 2 front yoke 2x
- 3 back, on a fold 1x
- back hem facing, on a fold 1x
- 4 back yoke, on a fold 1x
- 5 front armhole facing 2x
- 6 back armhole facing 2x
- 7 right buttonhole band 1x
- 8 left front facing 1x
- 9 standing collar, on a fold 2x

Also draft and cut the following pieces, not included in the pattern sheet

- a) back loop 7 cm (23/4 ins) long, 2 cm (3/4 in) wide (incl. allowances).

Step 3 — Sewing



Fold inverted pleat at centre back in direction of arrow and baste to upper edge.

Fold back loop in half length wise and press, wrong side facing in. Unfold loop again. Now fold each long edge to the pressed fold and press again. Stitch fold edges together. Baste ends of loop to upper back edge, between seam marks.

Gather fronts between asterisks as marked on pattern to a length of 7.5 cm (3 ins).

Stitch front yokes to front and stitch back yoke to back. Press seam allowances onto yokes. Topstitch yokes 7 mm (1/4 in) from seams.

Stitch the shoulder seams. Press the seam allowances onto back. Topstitch seams.

Stitch the shoulder seams of the armhole facings. Press the seam allowances open. Pin the armhole facings right sides together with the edges of the armholes and stitch between the markings (seam number 5). Turn the extending facing ends back and pin.

Stitch the buttonhole band to the front edge of the right front and stitch the front facing to the left front. Turn the buttonhole band and the facing forward and press the seam allowances open.

Pin the front hem facings to the fronts and pin the back hem facing to the back, right sides together. Beginning at slit mark, stitch along edges of slits and hem. Turn upper edge of facings back at the seam ends. Stitch the side seams. On hem and armhole facings, stitch extending ends together. Turn the facings to the inside and press the edges. Then press allowances on lower edges of fronts and buttonhole band/facing to inside, aligned with hem facings.

Turn inside facing edges under and baste, clipping allowances of hem facings into corner.

Press facing on right buttonhole band to inside and baste. Work buttonholes. Turn buttonhole band to inside at joining seam. Topstitch close to right front edge and as marked. Turn buttonhole band forward and press. Baste to neck and lower edges.

Turn left facing to inside, turn edge under, and baste. Topstitch close to left front edge and again 2 cm (3/4 in) from left front edge.

Standing collar: Lay collar pieces right sides together. Stitch along front and upper edges, beginning and end stitching in front, exactly on seam line of joining edge. Trim the seam allowances. Turn collar right side out and press. Stitch outer collar piece to neck edge. Turn under edge of inside collar piece and baste along joining seam. Topstitch collar close to all edges. Work buttonhole in right collar end.

Topstitch close to hem and slit edges. Then topstitch again, 2 cm (3/4 in) from these edges, angling stitching at top of slits. Topstitch close to armhole edges and again 2 cm (3/4 in) from armhole edges, stitching horizontally across lower end of each armhole.

BurdaStyle

Button-Up Blouse with Gathers 04/2012