

12/2011 Long skirt

By: burda style magazine

<http://www.burdastyle.com/projects/122011-long-skirt>



Long skirt burda style magazine patterns FAQ

Materials

Silk crpe

Step 1 — Preparation



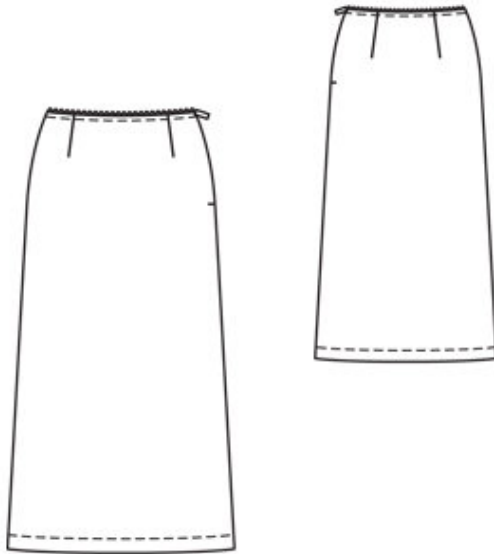
Paper cut for ANSI A (German DIN A4) prints:

This pattern is printed on 8.5 × 11 sheets of plain paper. Do not scale or center pages before printing. Wait until all sheets are printed out before beginning to tape them together. **Do not cut out pattern pieces yet**— Arrange the sheets on a large, hard, flat surface so that they fit together, matching up like numbers and letters (i.e. 6A to 6A). To tape pattern together, fold under the margin of one piece (6A) and tape right against the line of it's matching number/letter (6A).

burda style magazine pattern do not have seam allowance included.

Seam and hem allowances to be added: Seams and edges 1.5 cm (5/8 in).

Step 2 — Cutting out



1 front skirt panel, on a fold 1x
1 front hem facing, on a fold 1x
2 back skirt panel, on a fold 1x
1 back hem facing, on a fold 1x
Vilene Bias Tape/stay tape: Iron to inside upper edges of skirt panels.

Step 3 — Front and back

Stitch front and back darts. Press darts toward centres. Stitch right side seam, stitching forward and back at hem line.

Step 4 — Skirt

Press allowance on upper skirt edge to inside. Pin lace edging under skirt edge with scalloped edge extending. Topstitch close to upper skirt edge and again 7 mm (1/4 in) from edge.

Step 5 — Zip

Sew invisible zip to left slit edges. Stitch left side seam from lower edge to zip slit, at lower edge stitching forward and back at marked hem line. Turn in top ends of zip tapes and sew at upper edge of skirt, together with seam allowances.

Step 6 — Hem

On hem facings, stitch side seams, stitching forward and back at marked lower seam line. Pin hem facing to lower edge of skirt, wrong sides together. Topstitch lower edge of skirt close to marked hem line and 2 cm (3/4 in) from line. Trim seam allowance close to stitching.

BurdaStyle

12/2011 Long skirt