

Two Tone Coat 03/2012

By: burda style magazine

<http://www.burdastyle.com/projects/two-tone-coat-032012>



Coat sewing pattern. This coat is a great spring coat, quick and easy with no time consuming details and a clean design. burda style magazine patterns FAQ

Materials

Jacquard in two different fabric patterns, fabric width: 140 cm (55 ins), length: upper coat and sleeves, 1.30 m (1 1/2 yds); lower coat, 1.10 m (1 1/4 yd s). Lining, 140 cm (55 ins) wide: 1.55 1.60 1.60 1.65 1.65 m (1 3/4 1 3/4 1 3/4 1 7/8 1 7/8 yds). Vilene/Pellon G 785. 3 large sew-on snap fasteners.

Step 1 — Preparations



Paper cut for ANSI A (German DIN A4) prints:

This pattern is printed on 8.5 × 11 sheets of plain paper. Do not scale or center pages before printing. Wait until all sheets are printed out before beginning to tape them together. **Do not cut out pattern pieces yet**— Arrange the sheets on a large, hard, flat surface so that they fit together, matching up like numbers and letters (i.e. 6A to 6A). To tape pattern together, fold under the margin of one piece (6A) and tape right against the line of it's matching number/letter (6A).

Trace the pattern pieces from the pattern sheet. Follow lines and details for style 111 (This pattern also includes pieces, lines and markings for style 109 and 110 that should be ignored)

Lengthen piece 3 as indicated. Trace the pocket piece from piece 1 as a separate pattern piece, it is the same for all sizes.

The snap fasteners marked on piece 1 are for size 36. For sizes 38 to 44, mark the top snap the same distance from neck edge as for size 36. The bottom snap is the same for all sizes. Centre the third snap fastener in between

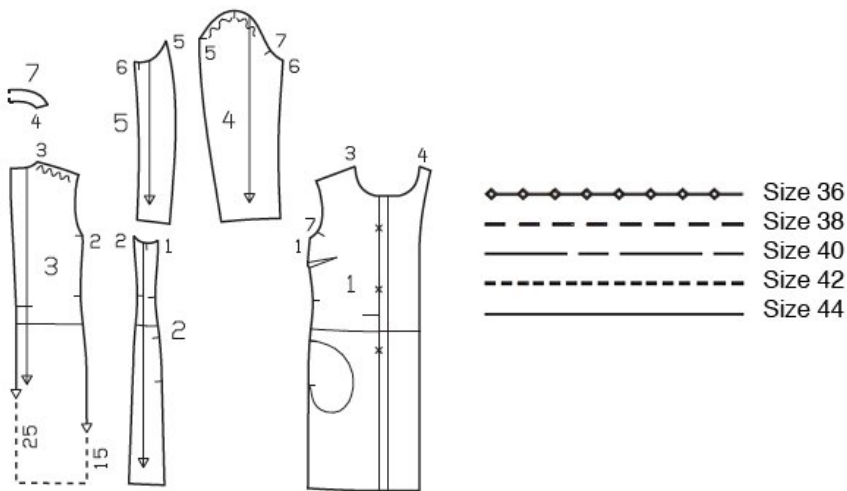
Cut pieces 1, 2, and 3 apart on the marked seam line = upper and lower front, upper and lower side piece, upper and lower back. Add seam allowance.

Lay cut-apart pieces together again to cut lining, along original line, not seam allowance.

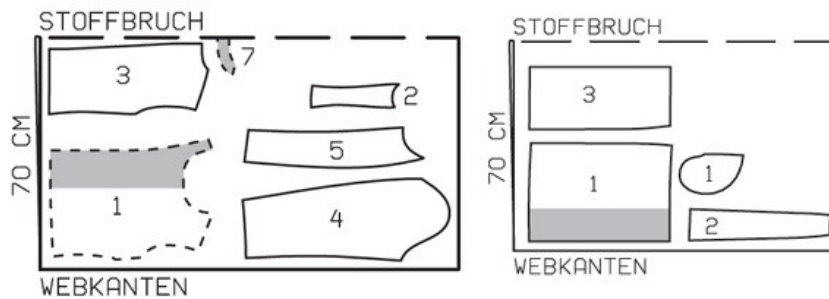
burda style magazine pattern do not have seam allowance included.

Seam and hem allowances to be added: Seams and edges 1.5 cm (5/8 in), hem 4 cm (1 5/8 ins), lining 1.5 cm (5/8 in).

Step 2 — Cutting out



Main fabric, 140 cm width,



Webkante = Selvage
Stoffbruch = Fabric fold

Upper coat and sleeves:

- 1 upper front 2x
- 2 upper side piece 2x
- 3 upper back 2x
- 4 upper sleeve 2x
- 5 lower sleeve 2x
- 7 back facing,
on a fold 1x

Lower coat:

- 1 lower front 2x
- pocket piece 2x
- 2 lower side piece 2x
- 3 lower back 2x

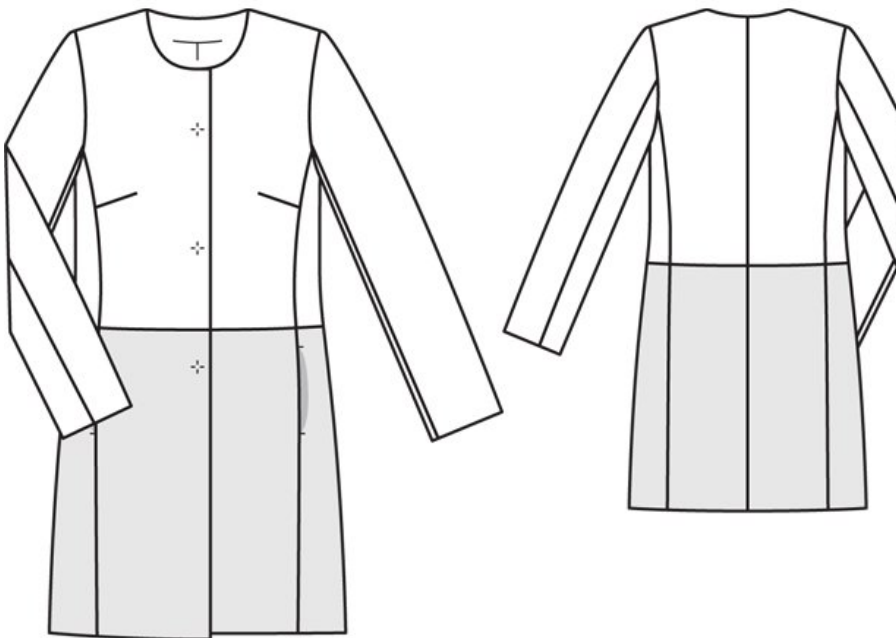
Lining:

- piece 1 minus facing width;
- piece 3 minus neck facing and with an ease pleat of approx. 2 cm (3/4 in) at centre back;

pieces 2, 4, and 5, and pocket piece.

Interfacing: Interface the hem allowances.

Step 3 — Sewing



Stitch upper front pieces to lower front pieces. Stitch upper side pieces to lower side pieces. Stitch upper back pieces to lower back pieces. Press seam allowances open.

Stitch bust darts. Press darts down. Stitch side pieces to fronts, not stitching across the pocket openings. Press seam allowances open.

Inseam pockets: Pin pocket pieces right sides together with seam allowances of pocket opening edges, pocket lining pieces to fronts, pocket pieces of main fabric to side pieces. Stitch pocket pieces in place directly along marked seam lines. Press pocket pieces forward and stitch together.

Stitch the centre back seam. Stitch side pieces to back. Stitch shoulder seams.

Turn the front self-facings to outside and stitch to back facing. Stitch facing right sides together with the neck edge. Trim seam allowances, trimming front corners diagonally. At neck edge, turn facing up and stitch to

seam allowances, close to seam, as far as possible. Turn facing to inside. Press edges. Unfold facing at hem. Press hem allowance to inside but do not yet sew in place. Turn facing to inside again.

Stitch the front and back sleeve seams. Press sleeve hem allowances to inside and sew in place by hand.

Set in sleeves, easing sleeve caps. Turn the garment inside out and set in sleeves in each armhole, right sides facing each other, easing the sleeve caps. Pin the sleeve to the armhole and stitch around the armhole opening. Press the seam allowance out in to the sleeve.

Sew lining. On lining back, stitch allowances of centre seam together, 1 cm (3/8 in) from edge. To form ease pleat, stitch along centre back at top and bottom, each approx. 5 cm (2 ins) long, and baste in between. Press pleat to one side. Stitch darts and seams of lining. Set in sleeve linings same way as sleeves on jacket.

Sew lining in place, hem jacket: Stitch lining to inside facing edges, turning hem allowance of facings down. Lay lining inside jacket with wrong sides together, pulling linings into sleeves. Turn hem allowance to inside and sew in place by hand. Turn in lining along hem edge. Press fold edge lightly, push upward in a slight curve, and pin to hem allowance. Sew facings and lining in place. Lay extra length of lining down and press lightly. Pin a fold, approx. 1 cm (3/8 in) deep, in lining, above sleeve hems. Turn in sleeve linings and sew to hem allowance. Lay extra length down and press.

Fasten finished coat with snap fasteners. First cover snap fastener halves with lining fabric. Sew snaps to coat with small, even stitches, exiting needle on inside/ outside of fabric

BurdaStyle

Two Tone Coat 03/2012