

Sun Hat 03/2012

By: burda style magazine

<http://www.burdastyle.com/projects/sun-hat-032012>



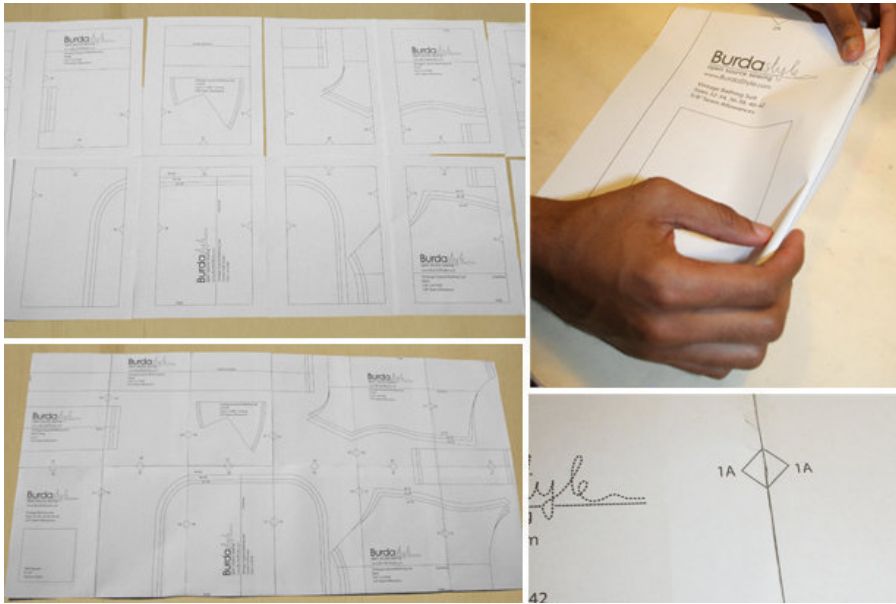
Sun hat sewing pattern. This cute hat is quick and easy to make. Perfect to protect the little ones from the sun. burda style magazine patterns FAQ

Materials

Floral print batiste, width: 115 cm (45 ins), length: 0.30 m (3/8 yd). Plain gabardine, 145 cm (57 ins) wide, for lining: 0.30 m (3/8 yd). Vilene/Pellon F 220. Striped petersham ribbon, 2 cm (3/4 in) wide: 0.75 m (7/8

yd). 1 large button and 3 smaller buttons.

Step 1 — Preparations



Paper cut for ANSI A (German DIN A4) prints:

This pattern is printed on 8.5 × 11 sheets of plain paper. Do not scale or center pages before printing. Wait until all sheets are printed out before beginning to tape them together. **Do not cut out pattern pieces yet**— Arrange the sheets on a large, hard, flat surface so that they fit together, matching up like numbers and letters (i.e. 6A to 6A). To tape pattern together, fold under the margin of one piece (6A) and tape right against the line of it's matching number/letter (6A).

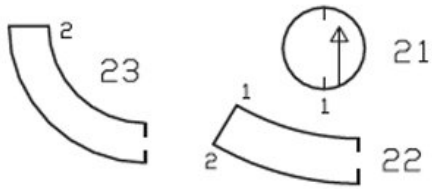
Trace the pattern pieces from the pattern sheet.

burda style magazine pattern do not have seam allowance included.

Seam and hem allowances to be added: Seams and edges 1 cm (3/8 in)

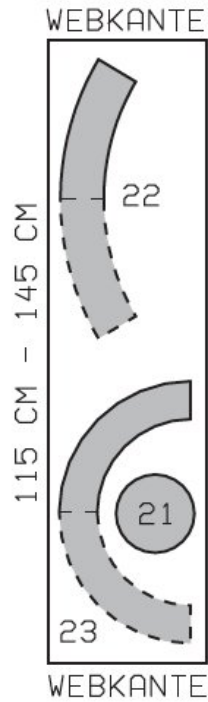
Step 2 — Cutting out

Pattern Pieces 21 to 23



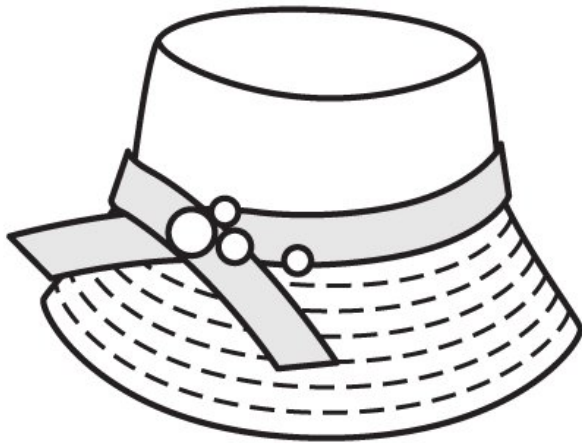
Cutting:
Batiste; 115 cm width
Gabardine (lining) 145 cm width

Webkante = Selvage
Stoffbruch = Fabric fold



Batiste (self fabric) and gabardine (lining):
21 crown 1x
22 side piece, on a fold 1x
23 hat brim, on a fold 1x

Step 3 — Sewing



Stitch centre back seams on side pieces of outer fabric and of lining. Press seam allowances open. Stitch upper edge of each side piece right sides together with crown piece (seam number 1). Press seam allowances onto side pieces.

Stitch centre back seam of brim pieces (outer fabric and lining). Lay brim pieces right sides facing. Stitch outer edges together. Trim seam allowances. Turn brim right side out. Topstitch close to outer edge of brim, then topstitch several times again, spaced 1 cm (3/8 in) apart. Stitch brim to outer side piece. Press seam allowances onto side piece.

Lay hat lining inside hat, with wrong sides facing. Turn edge under and sew to brim joining seam by hand.

Turn ends of petersham ribbon under at angles. Lay ribbon on side piece along brim joining seam, and pin, overlapping ends of ribbon at an angle on the side. Sew upper edge of ribbon to side piece by hand and leave remaining edges of ribbon loose. Sew large button to overlapped ends of ribbon. Sew smaller buttons next to large button it.

BurdaStyle

Sun Hat 03/2012