

# Hawaiian Shirt 04/2012

By: burda style magazine

<http://www.burdastyle.com/projects/hawaiian-shirt-042012>

---



Hawaiian men's shirt sewing pattern. This is the way to go for summer, boys. Get a cool flower print fabric and start sewing!

## Materials

Batiste, width: 150 cm (59 ins), length: Size 48 – 50: 1.35 (1 5/8 yds) Size 52 – 56: 1.65 m (1 7/8 yds).  
Vilene/Pellon G 785. 7 buttons.

---

## Step 1 — Preparations



Paper cut for ANSI A (German DIN A4) prints:

This pattern is printed on 8.5 × 11 sheets of plain paper. Do not scale or center pages before printing. Wait until all sheets are printed out before beginning to tape them together. **Do not cut out pattern pieces yet**— Arrange the sheets on a large, hard, flat surface so that they fit together, matching up like numbers and letters (i.e. 6A to 6A). To tape pattern together, fold under the margin of one piece (6A) and tape right against the line of it's matching number/letter (6A).

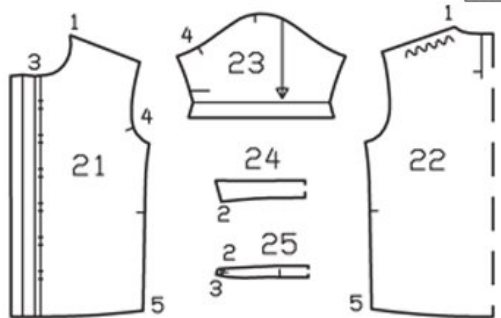
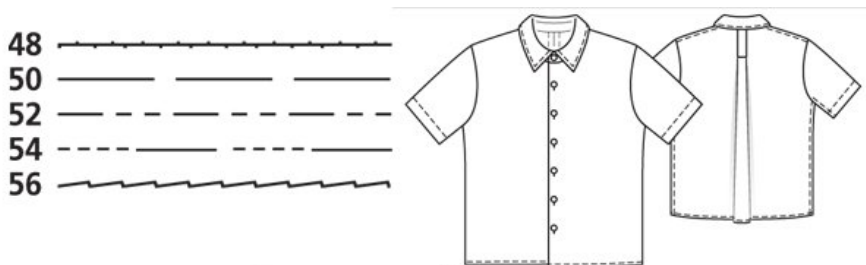
Trace the pattern pieces from the pattern sheet following the lines and markings for the correct size. The buttonholes on piece 21 are marked for size 48. For sizes 50 – 56, mark the top buttonhole the same distance from the neck edge as for size 48. The bottom buttonhole is the same for all sizes. Space the other buttonholes evenly in between.

**burda style magazine pattern do not have seam allowance included.**

Seam and hem allowances to be added: Seams and edges 1.5 cm (5/8 in), no allowances on vertical edge of front self-facing, hem 2 cm (3/4 in). Sleeve hem allowances are already included on the pattern piece.

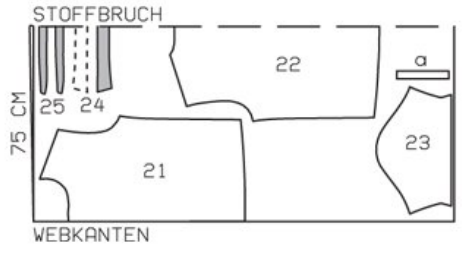
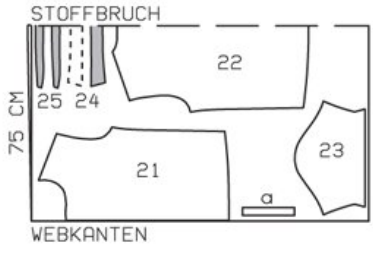
---

## Step 2 — Cutting out



Fabric width 150 cm  
Sz. 48, 50

Sz. 52 - 56



cut on a double layer of fabric

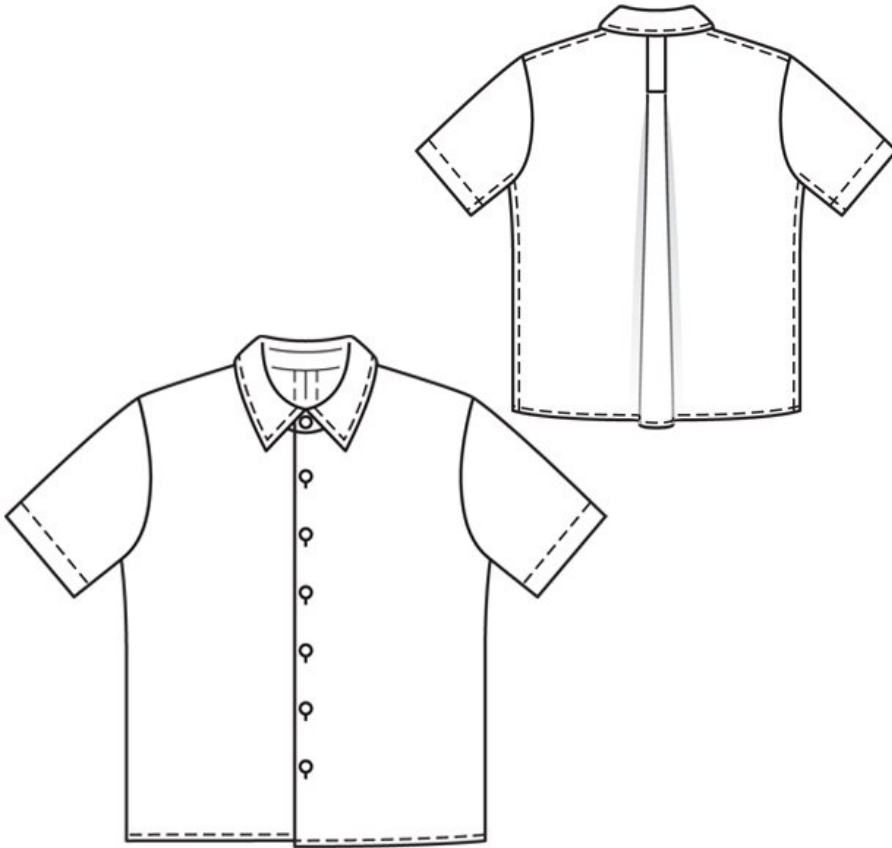
stoffbruch = fabric fold  
webkanten = selvage

- 21 front 2x
- 22 back, on a fold 1x
- 23 sleeve 2x
- 24 collar, on a fold 2x
- 25 collar stand, on a fold 2x

Also draft the following piece, not included in the pattern sheet:  
Back band, 3 cm (1 1/4 ins) wide, 20 cm (8 ins) long, finished length 10 cm (4 ins).

Interfacing: Interface undercollar piece and the collar stand.

### Step 3 — Sewing



Back pleat: Fold back piece in half lengthwise, with wrong side facing in, matching the marked stitching lines. Stitch the stitching lines together from upper edge to seam mark. Unfold back again. Press pleat flat so that it lies centered over seam.

Fold back band in half lengthwise, right side facing in. Stitch long edges together. Turn band right side out and press. Lay band on back pleat, matching open ends to neck edge. Edgestitch ends in place.

Sew each shoulder seam as a flat-felled seam: Stitch the seam. Press seam allowances onto back. Trim seam allowance which lies below to a width of 5 mm (3/16 in). Turn under edge of seam allowance which lies on top and baste in place. Stitch from outer side, 7 mm (1/4 in) from seam.

Stitch sleeves to armhole edges. Press allowances of sleeve joining seams away from sleeves. Topstitch shirt fronts and back 7 mm (1/4 in) from joining seams.

Stitch the side seams and sleeve seams as continuous seams. Clip allowances of sleeve seams at hem fold line. Finish seams as flat-felled seams.

On fronts and on back, turn hem allowance to inside, turn edge under by half width, press, and stitch. Turn edge sleeve hem allowance to inside, on marked fold line, turn raw edge under, and stitch as marked.

Fold front self-facings to inside on fold lines and press. Turn the folded facings to the inside and press. Paste to neck edge and sew to hem edge.

Collar with collar stand: Stitch the collar pieces right sides together along the outer edges. Trim seam allowances. Turn collar right side out and press. Topstitch collar edges. Lay collar stand pieces right sides together, catching collar in between. Stitch along front and upper edges of collar stand, beginning and ending in front, exactly on seam line of joining edge. Turn collar stand right side out. Stitch the outer collar stand piece to the neck edge of shirt. Press seam allowances onto collar stand. Turn under edge of inside collar stand piece and baste over joining seam. Topstitch collar stand close to all edges.

Work buttonholes in left shirt front and in left end of collar stand.

---

**BurdaStyle**

Hawaiian Shirt 04/2012