

06/2011 Hooded shirt for children

By: burda style magazine

<http://www.burdastyle.com/projects/062011-hooded-shirt-for-children>



Hooded shirt for children burda style magazine patterns FAQ

Materials

Linen

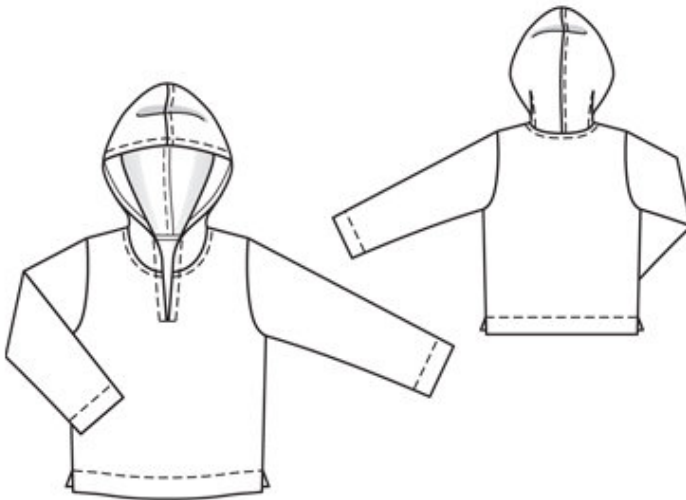
Step 1 — Preparation

Trace the pattern pieces from the pattern sheet.

Seam and hem allowances:

Seams and edges 1.5 cm (5/8 in), front edge of hood 2 cm (3/4 in), hem and sleeve hems 5 cm (2 ins) (flare sleeve hems).

Step 2 — Cutting out



21front, on a fold 1x

22back, on a fold 1x

23sleeve 2x

24hood 2x

a) facing strip for front opening, 11 â— 11 â— 12 â— 12 â— 13 cm (43/8 â— 43/8 â— 43/4 -43/4
â— 51/4 ins) long, 5 cm (2 ins) wide (incl. allowances).

Step 3 — Slit

Hand baste along slit mark at centre front to make it visible from right side of fabric. Press long edges of facing strip for front opening to wrong side, 1 cm (3/8 in) wide, and press bottom end to wrong side, 5 mm (3/16 in) wide. Pin this facing strip right sides together with front, over marked slit. Work from wrong side to stitch closely around marked slit, beginning at top seam mark and tapering stitching to a V at end of slit. Leave facing lying right sides together with front piece for now.

Step 4 — Shoulder seams

Stitch shoulder seams. Press seam allowances open

Step 5 — Darts

Stitch darts in hood pieces. Press darts toward back. Topstitch close to dart seams.

Step 6 — Hood

Stitch centre seam of hood as a flat-felled seam: Lay hood pieces right sides together and stitch centre seam. Press allowances to one side. Trim allowance which lies below to 7 mm (1/4 in) wide. Turn under edge of allowance which lies on top and baste. Work from right side to stitch 1 cm (3/8 in) from seam.

Step 7 — Hood

Turn allowance on front edge of hood to inside, turn raw edge under, and stitch 1 cm (3/8 in) from edge. At neck edge, turn facing forward toward slit. Baste hood to neck edge. Lay slit facing on front again and pin to joining seam, over hood. Stitch along neck edge. Trim seam allowances to 7 mm (1/4 in) wide. Pin seam tape to seam allowance of hood (joining seam). Edgestitch edge of seam tape close to joining seam. Trim away extending ends of seam tape. Trim allowances diagonally across corners. Turn slit facing to inside. Press allowances of joining seam and seam tape down. Press slit edges. Topstitch 1 cm (3/8 in) from slit edges and stitch across lower end of slit. Topstitch 7 mm (1/4 in) from neck edge, along hood joining seam.

Step 8 — Side seams

Stitch side seams, leaving slits open. Press lower edge of hem allowances to inside, 1 cm (3/8 in) wide. On side edges, turn hem allowances to outside again and stitch to slit edges. Turn hem allowances to inside again. Press side seam allowances open and press slit and hem edges. Topstitch 4 cm (15/8 ins) from lower edge, catching the hem.

Step 9 — Sleeves

Stitch sleeve seams. Press hem allowances to inside, turn raw edges under, and stitch 4 cm (15/8 ins) from lower edges.

Step 10 — Sleeves

Set in sleeves.

BurdaStyle

06/2011 Hooded shirt for children