

10/2010 Puff Sleeve Dress with Leather Cut Outs

By: burda style magazine

<http://www.burdastyle.com/projects/102010-puff-sleeve-dress-with->



Puff Sleeve Dress with Leather Cut Outs burda style magazine patterns FAQ

Materials

Crosswise stretch gabardine. Lamb nappa leather

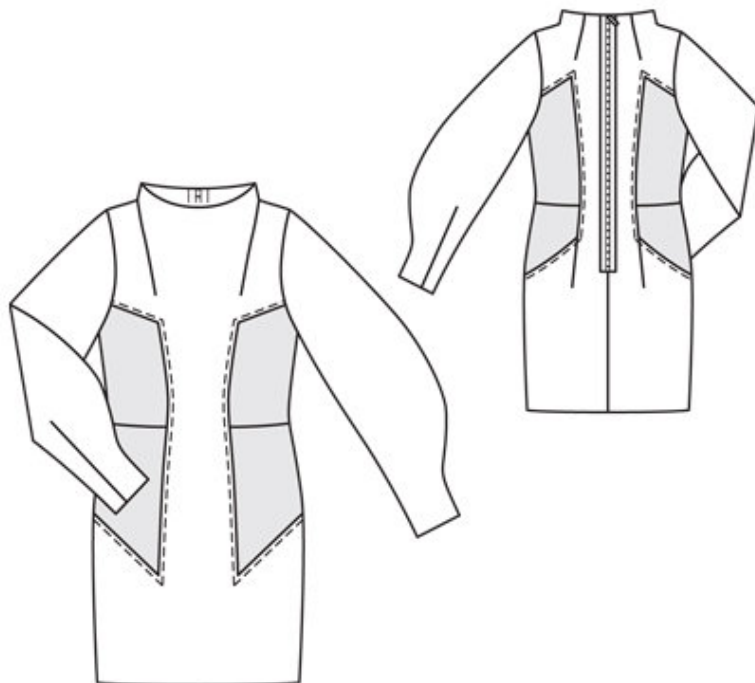
Step 1 — Preparation

Trace the pattern pieces from the pattern sheet.

Seam and hem allowances:

Seams and edges 1.5 cm (5/8 in), hem and sleeve hems 4 cm (15/8 ins).

Step 2 — Cutting Out



Gabardine:

1 front, on a fold 1x

4 back 2x

5 front sleeve 2x

6 back sleeve 2x

7 front neck facing, on a fold 1x

8 back neck facing 2x

Leather:

2 upper side piece 2x

3 lower side piece 2x

Interfacing: Iron onto facing pieces.

Step 3 — Front darts

Cut along centres of front darts, about 10 cm (4 ins) long. Stitch front darts, beginning exactly at shoulder seam line. Press darts toward centre front. Stitch upper and lower darts on back pieces, stitching lower darts exactly from seam line of slanted section seam. Press back darts toward centre back.

Step 4 — Side seams and section seam edges

Stitch side seams (seam number 1), beginning exactly on seam line of slanted section seam. Press seam allowances open. Trim away seam allowance on all section seam edges (vertical and horizontal) of front and back pieces.

Step 5 — Side pieces

Stitch upper side pieces to lower side pieces (seam number 2). Spread seam allowances open and glue down (textile adhesive).

Step 6 — Front and back pieces

Lay front and back pieces on seam allowances of side pieces, 1.5 cm (5/8 in) wide, with wrong side facing right side (seam numbers 3, 4, and 5) and stitch 5 mm (3/16 in) from edge.

Step 7 — Darts in back sleeves, underneath sleeve seams

Stitch darts in back sleeves. Press darts forward. Stitch underneath sleeve seams (seam number 6). Press allowances open.

Step 8 — Sleeves

Stitch sleeves to front and back pieces (seam numbers 7 and 8). Match marking on front sleeve to front section seam and match underneath sleeve seam to marking on side piece. Above underarm curve, press seam allowances toward sleeves.

Step 9 — Stitch shoulder seams and upper sleeve seams each as a continuous seam

Stitch shoulder seams and upper sleeve seams each as a continuous seam. Clip seam allowances into corners. Press seam allowances open.

Step 10 — Stitch shoulder seams of neck facing

Stitch shoulder seams of neck facing. Clip seam allowances into corners. Trim away allowance on back ends of facing.

Step 11 — Stitch centre back seam

Stitch centre back seam, leaving slit open for zip. Press seam allowances open and press slit edges to inside.

Step 12 — Zipper, slits and shoulder pads

Open zip and pin to outside of back pieces so that zip teeth meet marked edges of opening, laying allowances on slit edges out flat again to do so. Baste zip tapes in place, with long diagonal stitches, from the top to about 3 cm (1 1/4 ins) before end of slit, not catching allowances on slit edges. Fold top ends of slit allowances out over zip teeth and pin to neck edge. Pin facing right sides together with neck edge — ends of facing lie on allowances of slit edges. Stitch along neck edge. Turn facing and allowances on slit edges to inside. Press neck edge. Close zip. Turn in bottom ends of zip tapes and baste in place. Edgestitch zip tapes in place and stitch close to teeth of zip (zipper foot). Sew inside edge of facing to sleeve attachment seams and to darts. Sew shoulder pads in place.

BurdaStyle

10/2010 Puff Sleeve Dress with Leather Cut Outs