

Ehren

By: burdastyle

<http://www.burdastyle.com/projects/ehren>



Whether a night on stage or Prom Night, a tuxedo is a must for those special evenings in a manâ€™s life. Our tux jacket has a classic cut, pointed satin lapels, and flap welt pockets. We used the Jochen pant pattern for our tux pant, with the only alterations being the satin strip sewn down the side seam, and a flat wide hook

and eye at the center front instead of a button. We also used our David bow tie pattern.

Materials

wool suiting, silk satin, silk lining, shoulder pads, interfacing, satin covered buttons

Step 1

**burda Download-Pattern
6049 – Instructions**
normal weit

fortgeschritten
●●●●

burda sizes		55 ins / 140 cm								
		44	46	48	50	52	54	56	58	60
Sports Jacket	yds		2 1/4				2 1/4		3 1/4	3 1/4
	m		2,50				2,55		2,95	2,95
Lining	yds		1 1/2				2		2	2 1/2
	m		1,70				1,75		1,75	2,05

→ with nap

Interfacing
90 cm x 270 cm

Gabardine,
leichte Woll-
stoffe, Leinen

74-82 cm

100-137 cm

right side

wrong side

interfacing

lining

batting

Patternpieces:

SPORTS COAT

- 1 Front piece 2x
- 2 Back piece 2x
- 3 Side piece 2x
- 4 Upper sleeve 2x
- 5 Undersleeve 2x
- 6 Top collar 1x
- 7 Undercollar 1x
- 8 Collar stand 2x
- 9 Front facing 2x
- 10 Back facing 1x
- 11 Patch 1x
- 12 Pocket pouch 1x
- 13 Piping 4x
- 14 Pocket pouch 2x
- 15 Flap 4x

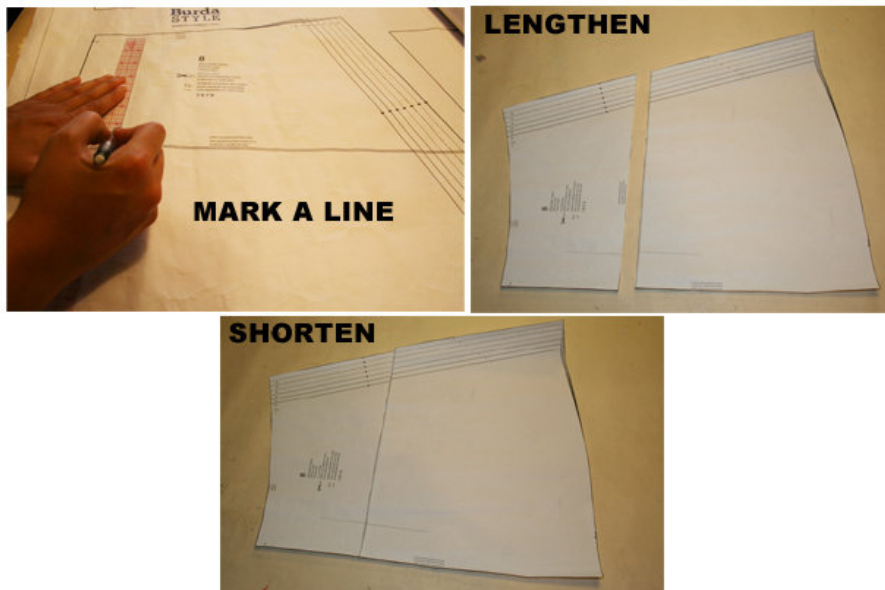
Fabrics: Gabardine, light wool fabric, linen

Step 2



The patterns can be printed out at the copy shop. If you decide to print them at home, follow the instructions: Paper cut for ANSI A (German DIN A4) prints: The patterns are printed out with a thin frame on 56 sheets. Wait until all sheets are printed out. Arrange the sheets so that they fit together (see additional page with the overview of the prints). Fold the single sheets on the upper and right edge along the thin frame lines. Begin with the left lower sheet and then tape the frame lines together precisely.

Step 3



ADJUST PATTERN SIZES

Select your size according to the Burda-dimension table: dresses, blouses, jackets and coats according to the bust size, trousers and skirts according to the hip width. Change the pattern to fit your measurements if they deviate from the Burda-size chart. Cut out the pattern pieces 1 to 21 for the sports coat according to your

size.

Refer to our “ Adjust patterns for mixed sizes” technique

LENGTHENING OR SHORTENING THE PATTERN PIECES Our pattern is calculated for a height of 5’ 6” (168 cm). If you are taller or shorter, you can adjust the pattern pieces along the lines marked “lengthen or shorten here”. This way the proper fit is maintained. Always adjust all pattern pieces along the same line to the same degree.

How to lengthen and shorten pattern pieces: Cut the pattern pieces along the marked lines

To lengthen, slide the two halves of the pattern piece as far apart as necessary.

To shorten, overlap the two halves of the pattern piece as far as necessary. Blend the side edges.

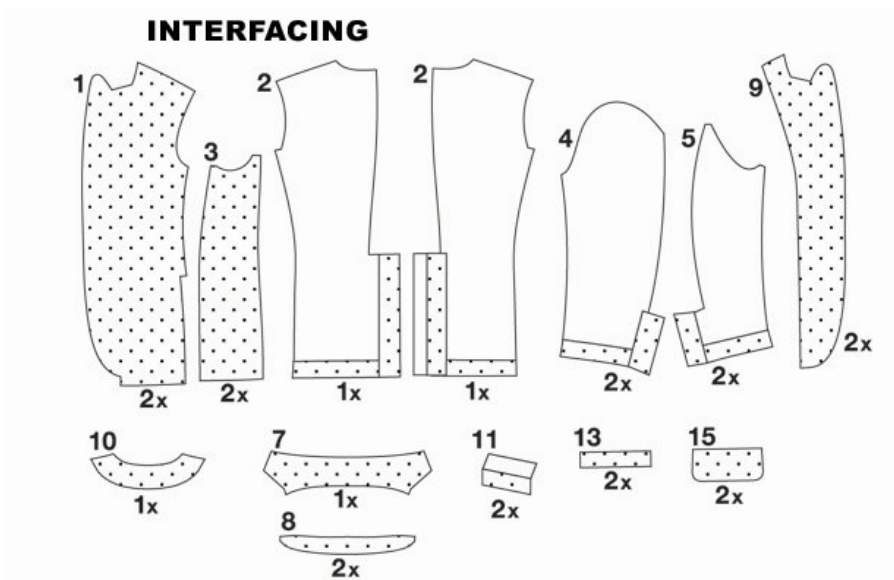
Step 4



CUTTING OUT FOLD (â“ â“ â“ â“) means: Cut on the fold, the fold being the center of the pattern piece, but never a cut edge or seam. The piece should be cut double, with the fold line forming the center line. Pattern pieces that are outlined with a broken line in the cutting diagrams are placed face down on the fabric. The cutting diagrams on the pattern sheet show how the pattern pieces should be placed on the fabric.

The cutting diagrams show the placement of the pattern on the fabric. For a single layer of fabric, the pattern pieces are pinned to the right side. For double layers of fabric, the right sides are facing and the pattern pieces are pinned to the wrong side. The pattern pieces that are shown extending over the fold of the fabric in the cutting diagram should be cut last from a single layer of fabric.

Step 5



SEAM AND HEMLINE ALLOWANCES are included: 1" (3 cm) for the hemline and 5/8" (1.5 cm) for all edges and stitches. Using BURDA copying paper, transfer the lines and signs of the pattern onto the left fabric side. Instructions can be found in the packaging.

LINING

Cut the lining pieces according to the pattern pieces 4,5,14 and 16 to 21 from the cutting diagram.

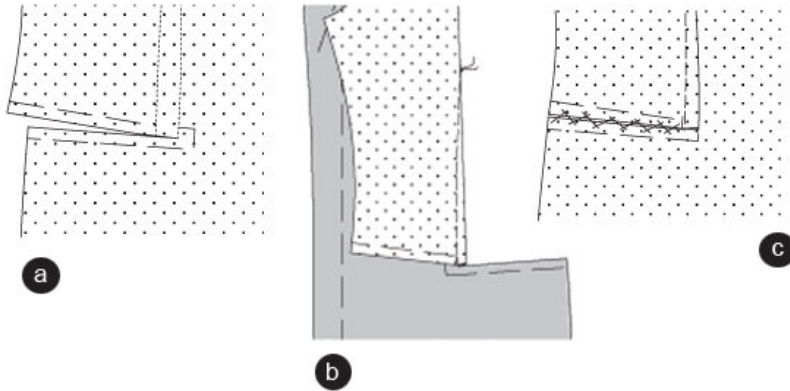
INTERFACING

Cut out the INTERFACING according to the picture and press onto the wrong fabric side.

SEWING

While sewing, the right sides of the fabric are facing. Transfer all lines of the pattern onto the right side of the fabric using basting stitches.

Step 6



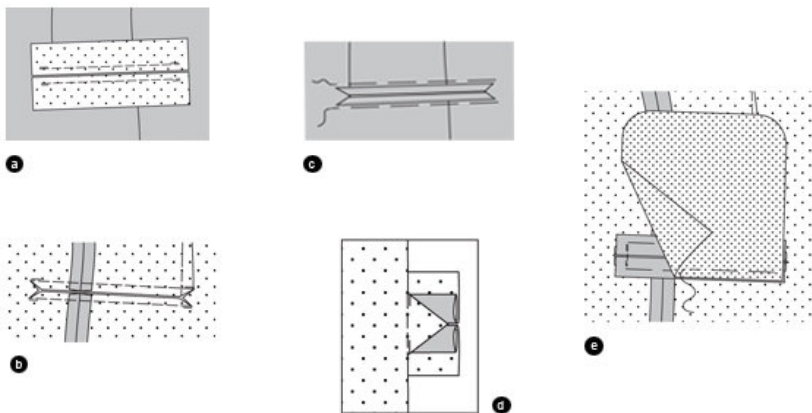
FRONT PIECES

Cut in the front pieces on both cutting lines to the front dart lines (a). Stitch darts and press towards the center front (b). Position the edges together and stitch using herringbone stitches ©.

FRONT PRINCESS SEAMS

Position the side pieces on the front pieces, right sides facing. Pin the princess seams (seam number 1) and stitch. Press allowances apart.

Step 7



PIPING POCKETS WITH FLAPS

The front pocket end is marked for size 34 (EU 44). For sizes 36 to 50 (EU 46 to 60), mark the end of the pocket from the dart of the individual size.

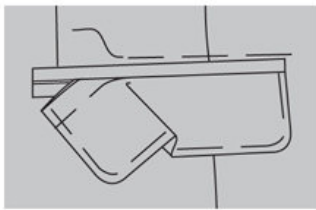
Pin the piping strips along both edges of the cutting line on the front piece, stitch $\frac{1}{4}$ " (0.7 cm) wide. Secure seam ends (a).

Cut in the front piece: at the pocket ends, cut at an angle that creates small triangles. Do not cut in the piping (b). Press the piping over the seam line.

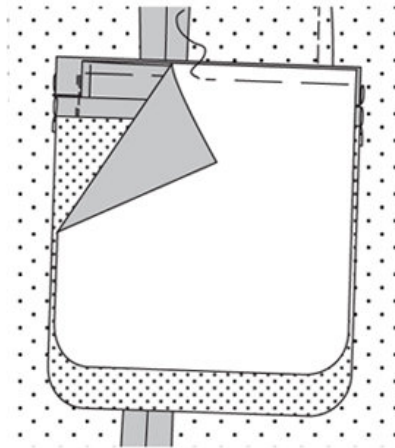
Turn the piping to the inside. Pin along the right side so that the piping pair is equally wide and fills out the cutting line ©. Fold the little triangles inside and stitch on the piping (d).

Pin the lining pocket pouch (piece 14) onto the left front piece so that the upper edge is positioned above the seam line of the bottom piping. On the right side, stitch along the seam line of the bottom piping, enclosing the pocket pouch. Press the pocket pouch downwards (e).

Step 8



a



b

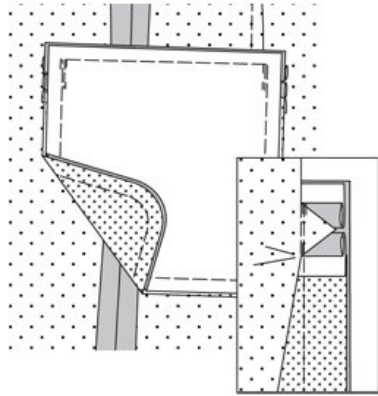
FLAPS

Position the flap pieces together. Stitch the side and bottom edges together. Trim allowances. Turn the flaps inside out and press. Pin the open edges together.

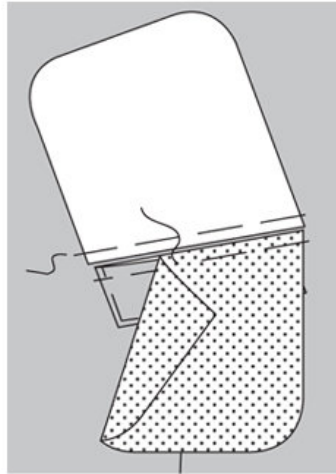
From the outside, move the flap under the top piping, pin (a).

Working from the wrong side, pin the fabric pocket pouch over the seam line of the upper piping. Stitch on the right side along the seam line of the upper piping, enclosing the pocket pouch and flap (b).

Step 9



a



b

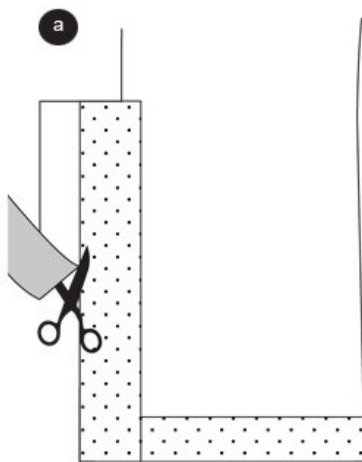
FLAP POCKET / LEFT FRONT PIECE

For sizes 46 to 50 (EU 56 to 60) mark the pocket lines as for sizes 34 to 44 (EU 34 to 44).

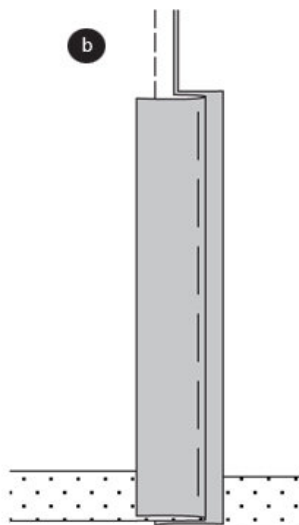
Fold the PATCH along the fold line, right sides facing. Stitch the narrow side. Trim allowances and cut the corners at an angle. Turn the patch inside out. Pin the edges and press. Pin the raw edges together. Trim the raw edge allowances to $\frac{1}{4}$ " (0.7 cm). Trim the pocket pouch allowances to $\frac{1}{4}$ " (0.7 cm) along the straight edge (a)

Pin the interfaced patch onto the seam line. Fold the lining pocket pouch (piece 19) over the patch and pin. Pin the pocket pouch (piece 12) so that the straight edge meets the patch. Stitch the pocket pieces $\frac{1}{4}$ " (0.7 cm) wide, thereby stitching the pocket pouch $\frac{1}{4}$ " (0.5 cm) shorter on both ends. Secure seam ends. Snip in the pocket. Turn the Pocket pouch through the cut to the inside. Press the patch over the cut, pin. Stitch the pocket pouch. Sew the narrow patch edges by hand (b).

Step 10



a



b

CENTER BACK SEAM / SLIT

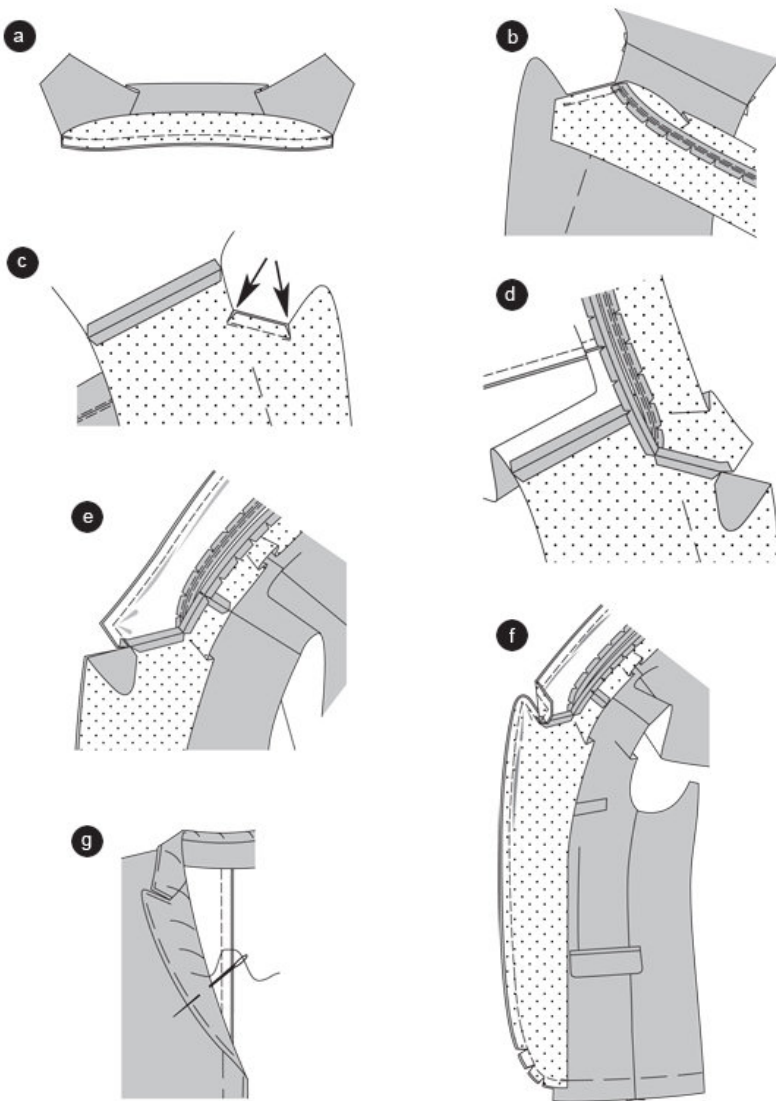
At the left back piece, cut the slit edge along the marked line LEFT EDGE. Position the back pieces together, right sides facing. Pin the center seam. Stitch from the top to the slit sign. Baste the slit (a).

Press allowances and slit edges into the left back piece. Fold the facing of the right back piece along the FOLD LINE, press (b).

SHOULDER SEAMS

Position the front and back pieces together, stitch shoulder seams (seam 3), easing the back piece onto the front piece without creating any puckers. Stitch shoulder facings (seam number 6).

Step 11



COLLAR / LAPEL

Stitch the collar stand onto the upper and undercollar (seam number 4), right sides facing. Trim allowances, snip in and press apart. Topstitch the seam narrowly, enclosing the allowances (a).

Stitch the undercollar onto the front pieces (seam number 5), from the cross line to the corner. Stitch the upper collar accordingly (seam number 7). Image shows undercollar (b)

Snip in the allowances of front piece and facings (arrow), from the corners to the stitch line ©. Image shows front piece.

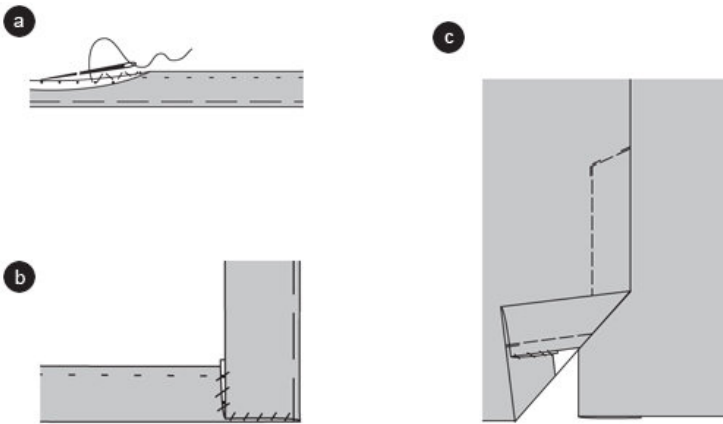
Stitch the undercollar from corners to corner onto the neckline. Stitch the upper collar accordingly onto the facing. Snip in allowances and press apart. Image shows undercollar (d).

Pin upper and undercollar together, the upper collar is slightly bigger and needs to be pushed up. From the seam line, stitch the collar pieces together. Do not enclose the collar seam line allowances of front piece and facings (e).

Turn the allowances up. From the cross line, pin the facings on the front edge. Push the extra length of the lapel up. Stitch the edges together. Trim allowances and cut the corners at a slant. Cut along the hemline, ending 1 1/2" (2 cm) before the facing end (f).

Turn the collar inside out. Fold facings to the inside, pin the edges and press. Keep the undercollar and front pieces slightly bunched up along the FOLD LINE. Stitch using a diagonal surface satin stitch. Stitch the collar seam lines using backstitch (g).

Step 12



BACK PRINCESS SEAMS

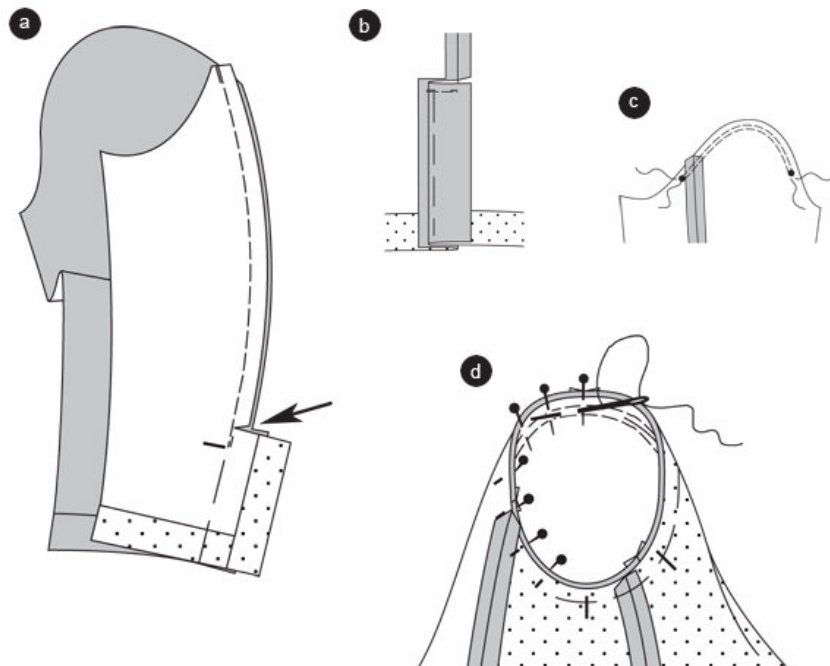
Position the side and back pieces together, right sides facing. Pin the back princess seam (seam number 2) and stitch. Press allowances apart.

HEMLINE / BACK SLIT

Turn the facings along the slit to the outside. Fold the hemline to the inside and sew by hand (a). Turn the facings inside again and stitch onto the hemline (b).

Topstitch the left back piece lengthwise along the slit, not enclosing the underlap. Pin the slit and stitch the left back piece at a slant, enclosing the underlap ©.

Step 13



SLEEVE SLIT

Position the upper sleeve and undersleeve together. Pin the back sleeve seam (seam number 8), including the slit. Stitch the seam from the top to the slit sign. Secure seam ends. Keep the slit pinned. Cut into the corners of the undersleeve allowances, close to the stitch line (arrow) (a).

Press the allowances apart, from the top to the cut. Press into the upper sleeve. Fold the UNDERLAP facing (undersleeve) and pin. Press. At the end of the slit, stitch the edges of facing and underlap, not enclosing the sleeve (b).

To ease the width of the sleeve curve, double stitch from * to * using basting stitches. Fold the sleeve lengthwise and stitch the front sleeve seams (seam number 9). Stitch the sleeve hemline ©.

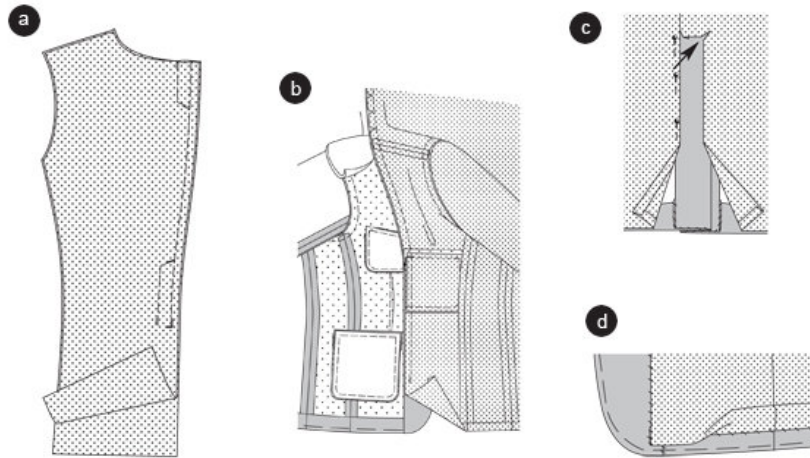
APPLY SLEEVE

To further ease the width, slightly tighten the bobbin threads of the basting stitches along the sleeve cap. When applying the sleeve to the armhole, the following points are important for the right fit of the sleeve:

The cross lines 10 of upper sleeve and front piece have to meet. The cross line of the undersleeve has to meet the cross line of the side piece. The cross line of the sleeve cap has to meet the shoulder seam. The eased width has to be distributed in a way that does not pucker or create pleats. Pin the sleeve onto the armhole, right sides facing, and stitch. Press the allowances inside the sleeve (d).

Apply SHOULDER PADS and stitch onto the allowances of shoulder seams and armhole seams.

Step 14



LINING

Stitch the PIPING POCKET on the wrong side of the front piece. No flap is necessary. In advance, press an interfacing strip onto the lining (see text and images 1 to 4, 6 and 7).

CENTER BACK SEAM / BACK PLEAT

Fold the back piece, right sides facing. Stitch the center seam to the slit sign. For the pleat, stitch along the markings and end at the cross line. Press the pleat to one side. Stitch the seams of the lining piece, same seam numbers meet. Stitch the open edges of the lining sleeve. Apply the lining sleeves. Press the allowance of the bottom lining edge and the bottom sleeve edge to the inside (a).

Stitch the lining on the facing (seam number 14), right sides facing; begin and end 4" (10 cm) above the hemline. Snip in the lining along the back neckline. Press the allowances into the lining. Move the lining inside the jacket, wrong sides facing (b).

Pin the lining on the slit underlap facing. Snip in across the other lining back piece, 1" (1 cm) below the slit sign. Snip in the corner at a slant (arrow). Fold the edges and sew on the facings by hand ©.

Push the bottom lining edge (also at the sleeves) up since it is slightly longer. Stitch it on the hemline and sleeve hem. Stitch the facings on the hemline. Fold the extra length of the lining down as a pleat. Stitch the lining on the facing (d).

Work BUTTON HOLES into the left front piece.

Apply BUTTONS onto the center of the right front piece.

Apply small BUTTONS on marking x of the upper sleeve, enclosing the underlap.

BurdaStyle

Ehren