

01/2012 Long fur coat with zipper

By: burda style magazine

<http://www.burdastyle.com/projects/012012-long-fur-coat-with-zipp>



Long fur coat with zipper burda style magazine patterns FAQ

Materials

Fake fur

Step 1 — Preparation

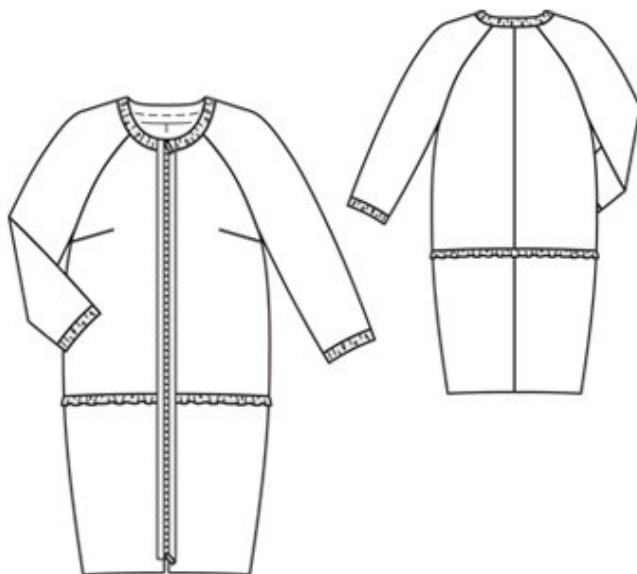


Paper cut for ANSI A (German DIN A4) prints:

This pattern is printed on 8.5 × 11 sheets of plain paper. Do not scale or center pages before printing. Wait until all sheets are printed out before beginning to tape them together. **Do not cut out pattern pieces yet**— Arrange the sheets on a large, hard, flat surface so that they fit together, matching up like numbers and letters (i.e. 6A to 6A). To tape pattern together, fold under the margin of one piece (6A) and tape right against the line of it's matching number/letter (6A).

burda style magazine pattern do not have seam allowance included.
Seam and hem allowances to be added: Seams and edges 1.5 cm (5/8 in).

Step 2 — Cutting out



Fake fur:

1upper front 2x

2lower front 2x

3upper back 2x

4lower back 2x

5front sleeve 2x

6back sleeve 2x

7back facing, on a fold 1x

8pocket piece 2x

Lining: pieces 1, 3, and 4 to lining line; piece 2 to lining line and with an ease pleat of approx. 2 cm (3/4 in) at centre back; also piece 6.

Interfacing: See pattern layout.

Step 3 — Bust darts

Stitch bust darts. Press darts down.

Step 4 — Lining

Pin each pocket lining piece right sides together with marked pocket opening edge on lower front piece. At beginning of pocket opening, stitch across seam allowance, up to 5 mm (3/16 in) below marked seam line, then stitch 5 mm (3/16 in) from marked seam line to the length of the opening, and at end of opening, stitch vertically up. Trim seam allowances and clip into corners. Turn pocket pieces to inside and press pocket

opening edges. On inside, lay pocket pieces of main fabric over attached pocket pieces — seam allowance extends at pocket opening edge. Stitch pocket pieces together.

Step 5 — Back seam

Stitch centre back seams on upper and lower pieces and stitch side seams.

Step 6 — Petersham ribbon

Cut 160 — 165 — 170 — 175 — 180 cm (63 — 65 — 67 — 69 — 71 ins) of petersham ribbon. Gather petersham ribbon 5 mm (3/16 in) from one lengthwise edge. Baste petersham ribbon to upper edges of lower front pieces, pocket pieces, and lower back piece so that it lies on garment piece, 2 cm (3/4 in) past seam line, and ends of ribbon meet at facing fold line.

Step 7 — Upper pieces

Stitch upper pieces to lower pieces. Press seam allowances up.

Step 8 — Sleeve seams

Stitch underneath sleeve seams (seam number 2). Stitch sleeves to front and back pieces (seam numbers 3 and 4). Press seam allowances open from upper edges to beginnings of underarm curve. Stitch top sleeve seams (seam number 5). Press seam allowances open.

Step 9 — Self facings

On both fronts, turn self-facing to outside and stitch to back facing. Stitch facing right sides together with neck edge. Trim seam allowances. Turn facing to inside and press edge.

Step 10 — Neck

Cut 80 — 80 — 80 — 85 — 85 cm (31 1/2 — 31 1/2 — 31 1/2 — 33 1/2 — 33 1/2 ins) of petersham ribbon for neck edge. Gather petersham ribbon close to both lengthwise edges. First gather upper edge of petersham ribbon along gathering threads and pin ribbon to neck edge, 2 mm (a scant 1/8 in) from edge. Knot thread ends. Then gather lower edge of ribbon along lower gathering threads, to match neck edge. Knot thread ends. Distribute gathering evenly. Edgestitch ribbon in place.

Step 11 — Hem

Press sleeve hem allowances to inside and baste. Cut remaining petersham ribbon into 2 equal pieces. Stitch ends of each piece together. Gather edges of petersham ribbon to match sleeves. Stitch petersham ribbon to lower edges of sleeves, matching seam of ribbon with sleeve seam.

Step 12 — Hem edge

At hem edge, unfold facings. Press hem allowance to inside but do not yet sew in place.

Step 13 — Construct lining

On lining backs, stitch allowances of centre seam together, 1 cm (3/8 in) from edge. Stitch along centre back at top and bottom, each 5 cm (2 ins) long, to form ease pleat, and baste in between. Press pleat to one side. Stitch darts and seams of lining.

Step 14 — Sew lining in jacket, hem jacket

Stitch lining to inside facing edges, first turning hem allowance of facings down. Lay lining inside jacket, with wrong sides together, pulling linings into sleeves. Turn hem allowance to inside and sew in place by hand. Turn in lining along lower edge of jacket. Press fold edge lightly, push upward in a shallow curve, and pin to hem allowance. Sew facings and lining in place. Lay extra length of lining down and press lightly. Above each sleeve hem, pin a fold, approx. 1 cm (3/8 in) deep, in lining. Turn in sleeve linings and sew to hem allowance. Lay extra length down and press lightly.

Step 15 — Zip

Open zip, turn top ends of zip tapes under. Lay each half of zip on outside of coat front, beginning at neck edge, so that zip teeth extend past front edge by 8 mm (a generous 1/4 in). Edgestitch zip tapes in place and stitch again 7 mm (1/4 in) from edges of zip tapes.

BurdaStyle

01/2012 Long fur coat with zipper