

01/2012 Fur coat

By: burda style magazine

<http://www.burdastyle.com/projects/012012-fur-coat>



Fur coat burda style magazine patterns FAQ

Materials

Fake fur with lengthwise stripes

Step 1 — Preparation



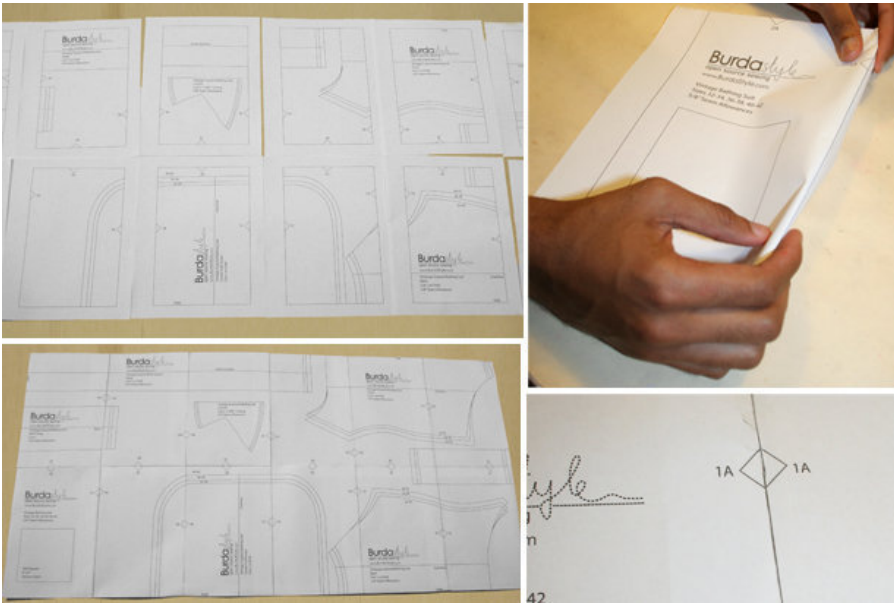
Paper cut for ANSI A (German DIN A4) prints:

This pattern is printed on 8.5 × 11 sheets of plain paper. Do not scale or center pages before printing. Wait until all sheets are printed out before beginning to tape them together. **Do not cut out pattern pieces yet**— Arrange the sheets on a large, hard, flat surface so that they fit together, matching up like numbers and letters (i.e. 6A to 6A). To tape pattern together, fold under the margin of one piece (6A) and tape right against the line of it's matching number/letter (6A).

burda style magazine pattern do not have seam allowance included.

Seam and hem allowances to be added: Seams and edges 1.5 cm (5/8 in).

Step 1 — Preparation



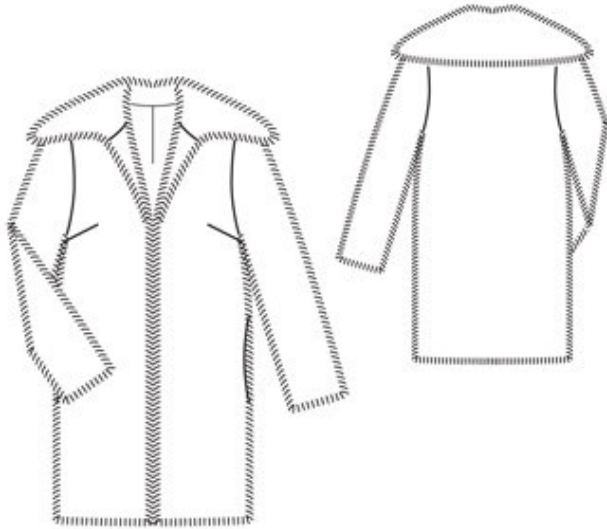
Paper cut for ANSI A (German DIN A4) prints:

This pattern is printed on 8.5 × 11 sheets of plain paper. Do not scale or center pages before printing. Wait until all sheets are printed out before beginning to tape them together. **Do not cut out pattern pieces yet**— Arrange the sheets on a large, hard, flat surface so that they fit together, matching up like numbers and letters (i.e. 6A to 6A). To tape pattern together, fold under the margin of one piece (6A) and tape right against the line of it's matching number/letter (6A).

burda style magazine pattern do not have seam allowance included.

Seam and hem allowances to be added: Seams and edges 1.5 cm (5/8 in).

Step 2 — Cutting out



Fake fur:

1 front 2x

2 back, on a fold 1x

3 collar, on a fold 2x

4 sleeve 2x

Lining:

piece 1 minus width of facing, pieces 2 and 4, and pocket piece (piece 1) 4x.

Step 3 — Bust darts

Stitch bust darts. Press darts down. Stitch shoulder seams. Stitch side seams, but do not stitch across pocket openings.

Step 4 — Inseam pockets

Pin pocket pieces right sides together with seam allowances of pocket opening edges. Stitch back pocket pieces along seam line and stitch front pocket pieces 7 mm (1/4 in) from seam line. Press pocket pieces onto front, trim even, and stitch together.

Step 5 — Sleeves

Stitch sleeve seams. Turn sleeve hem allowances to inside and sew in place by hand.

Step 6 — Sleeves

Set in sleeves.

Step 7 — Darts and lining

Stitch darts and seams of lining. At shoulder seams, leave the wider back edges extending at inside edges of front lining pieces and end seams 2 cm (3/4 in) before inside edges of front lining pieces. Set in sleeve linings.

Step 8 — Self facings

Unfold front self-facings. Stitch lining right sides together with inside facing edge, leaving approx. 8 cm (3 1/4 ins) open at bottom. Stitch remainder of shoulder seams. Leave facings and lining lying right sides together with coat for now.

Step 9 — Collar

Stitch collar pieces together along outer edges, right sides facing, beginning at seam number 2. Trim allowances. Turn collar right side out and press. Lay collar between waistcoat and facing / lining. Stitch under collar to neck edge and stitch top collar piece to facing and lining. Press seams open.

Step 10 — Facings

Turn facings and lining to inside. Pull sleeve linings into sleeves, wrong sides facing. Pin collar joining seams together. Reach between main fabric and lining to pull out the pinned collar joining seams. Stitch seam allowances together from shoulder seam to shoulder seam, close to collar joining seam. Push edges in place again.

Step 11 — Hem

At hem edge, unfold facings. Turn hem allowance to inside and sew in place by hand. Turn facings to inside again. Sew inside facing edges in place, loosely, by hand. Pin folds, approx. 1 cm (3/8 in) deep, in lining, above hems of coat and sleeves. Turn in lining edges and sew to hem allowances by hand. Remove pins, lay extra length of lining down, and press. Sew remaining front edges of lining in place.

BurdaStyle

01/2012 Fur coat