

# 01/2011 Jacket with invisible snaps

By: burda style magazine

<http://www.burdastyle.com/projects/012011-jacket-with-invisible-snaps>

---



Jacket with invisible snaps burda style magazine patterns FAQ

## Materials

Boucl

---

## Step 1 — Preparation

Trace the pattern pieces from the pattern sheet. Trace the pocket piece from piece 1 as a separate pattern piece.

The snap fasteners marked on piece 3 are for size 36. For the other sizes, mark the top snap the same distance from neck edge as for size 36. The bottom snap is in the same place for all sizes. Space the other snaps evenly in between.

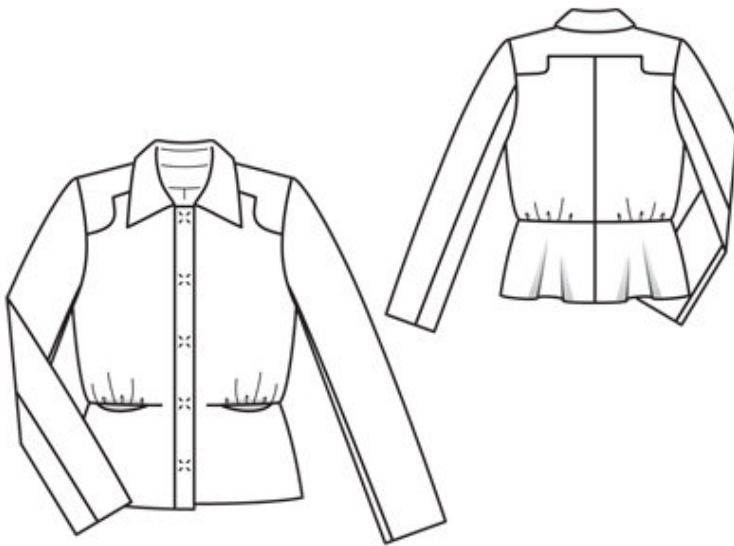
Lining: For the front lining piece, glue pieces 1 and 2 together. Trace front lining piece up to lining line. For the back lining piece, trace pieces 4 and 5 a second time and place together. Glue straight edges together. Mark a vertical line from upper edge to corner of yoke and cut. Glue the curved edges together, thereby spreading the cut edges open like a dart. Place neck facing on pattern pieces, trace, and trim away.

Seam and hem allowances:

Seams and edges 1.5 cm (5/8 in),  $\hat{A}$ -curved seams 1 cm (3/8 in), hem and sleeve hems 4 cm (15/8 ins), lining 1.5 cm (5/8 in).

---

## Step 2 — Cutting out



Boucl:

â— 1front 2x

â— â— pocket piece 2x

â— 2front yoke 2x

â— 3front band with self-facing 2x

â— 4back 2x

5 back yoke, on a fold 1x  
6 back peplum 2x  
7 upper sleeve 2x  
8 under sleeve 2x  
9 collar, on a fold 2x  
10 collar band, on a fold 2x  
11 back facing, on a fold 1x

Lining: front as instructed under 5 Preparation 5 ; back as instructed under 5 Preparation 5 , on a fold and with an ease pleat of about 2 cm (3/4 in) at centre back; pieces 6, 7, and 8; and 11—also pocket piece.  
Interfacing: See pattern layout. Also interface hem allowances. Iron interfacing to wrong side of under collar.

---

### Step 3 — Peplum

Stitch centre seams on back and back peplum. Press seam allowances open.

---

### Step 4 — Yokes

Stitch front yokes to fronts and stitch back yoke to back. Clip seam allowance of yokes into corners. Clip seam allowances of front and back along curves. Press seam allowances open.

---

### Step 5 — side seams

Stitch side seams (seam numbers 4 and 5).

---

### Step 6 — Pockets

Pin each pocket lining piece to pocket opening edge on lower horizontal edge of front, right sides facing. Stitch exactly between seam marks. Cut fronts between horizontal seam lines to about 2 cm (3/4 in) before pointed ends of seams. At pocket opening edges, clip seam allowances of fronts toward ends of seams. Lay pocket pieces up and stitch to seam allowances, close to seam. Turn pocket pieces to inside. Press pocket opening edges. Lay fabric pocket pieces under lining pieces, with upper seam allowance extending. Stitch pocket pieces together along side and lower edges.

---

### Step 7 — Upper edges

Gather upper horizontal edges of fronts and lower back edge between asterisks, to 8.5 — 9 — 9.5 — 10 — 10.5 cm (33/8 — 31/2 — 33/4 — 4 — 41/4 ins) in front and to 11 — 12 — 13 — 14 — 15 cm (43/8 — 43/4 — 51/4 — 51/2 — 6 ins) in back. Beginning at centre back, stitch back to each back peplum piece, then stitch horizontal edges of fronts together, stitching upper edge of fabric pocket piece to upper horizontal edge at pocket opening. Press allowances down.

---

### Step 8 — Shoulders

Stitch shoulder seams. Stitch front bands to vertical edges of fronts. Press seam allowances open. Lay self-facings outward and stitch to back facing. Stitch along neck edge from each front edge (fold) to seam mark. Leave facing lying right sides together with jacket for now.

---

## Step 9 — Collar with collar band

Stitch collar band pieces to collar pieces (seam number 9). Trim seam allowances and press open. Topstitch close to each side of seams. Lay collar pieces right sides together. Stitch along outer edges from seam number 10 beginning and ending stitching exactly at seam line of joining edge. Trim seam allowances. Turn collar right side out and press. Lay collar between coat and facing. Stitch undercollar to neck edge of coat and stitch top collar to facing. Press seam allowances open. Turn facing to inside. Pin collar joining seams together. In back, lay facing up again and stitch allowances together, close to collar joining seam.

---

## Step 10 — Hem

Unfold facings at hem. Press hem allowance to inside but do not yet sew. Lay facings to inside again.

---

## Step 11 — Sleeves

Stitch sleeve seams. Press sleeve hem allowances to inside and sew in place by hand.

---

## Step 12 — Sleeve caps

Set in sleeves, easing sleeve caps. Sew shoulder pads in place.

---

## Step 13 — Pleat and lining

Stitch ease pleat in back lining piece, at top and bottom each about 5 cm (2 ins) long, and baste in between. Press pleat to one side. Stitch lining seams. Set in sleeve linings.

---

## Step 14 — Line jacket, hem

Stitch lining to inside edges of facing, laying hem allowance down. Lay lining inside jacket with wrong sides facing, pulling linings into sleeves. Turn hem allowance to inside and sew in place by hand. Turn in lining along hem edge, press fold edge lightly, push upward in a shallow curve, and pin to hem allowance. Sew lining in place. Lay extra length of lining down and press lightly. Turn in sleeve lining and sew to sleeve hem allowance. Lay extra length down and press.

---

## Step 15 — Snaps

Cover halves of snap fasteners with lining. Sew top halves of snaps to right front facing as marked, taking even regular stitches and exiting needle on right side of fabric. Sew bottom halves of snaps to left front band.

---

**BurdaStyle**

01/2011 Jacket with invisible snaps