

# 04/2010 Jacket

By: burda style magazine

<http://www.burdastyle.com/projects/042010-jacket>

---

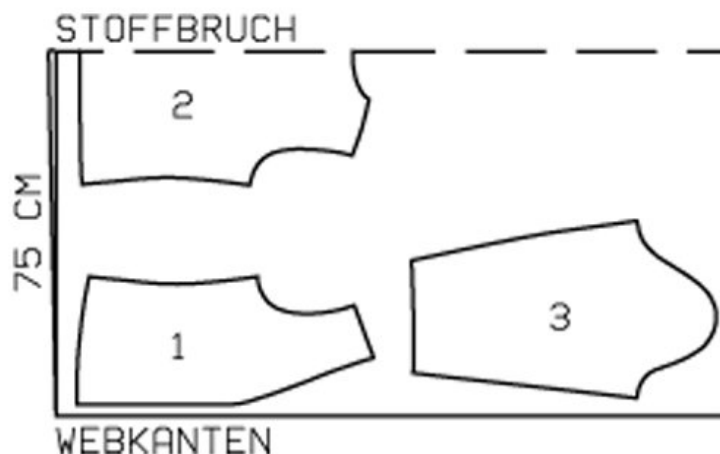
Jacket burda style magazine patterns FAQ

## Materials

stretch jersey

---

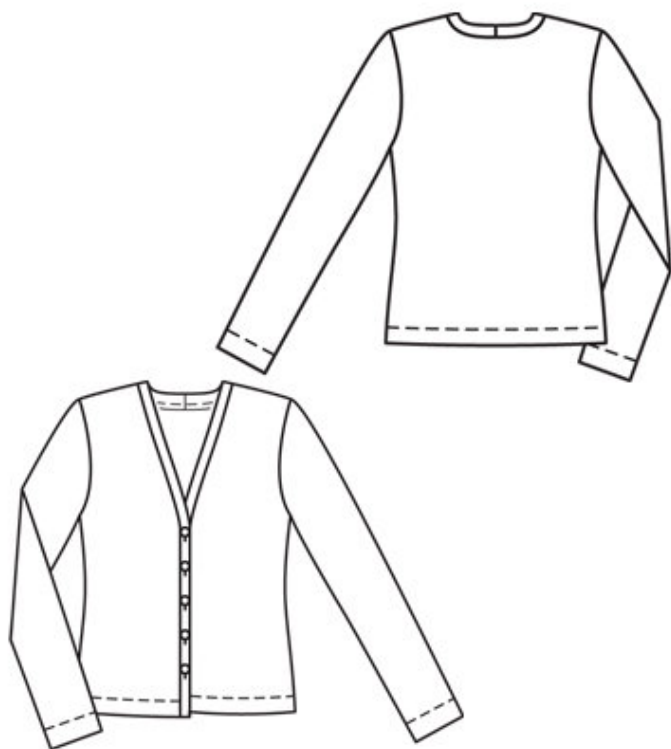
## Step 1 — Preparation



See the pattern overview above for all pattern details. Trace the pattern pieces from the pattern sheet. Piece 4 is a template and is only used for ironing the neck and fastening band.

---

## Step 2 — Cutting out



The pattern layouts below show you how to place the pattern pieces on the fabric. Make sure that the grain line marked on the pattern pieces runs parallel to the selvages and the fold edge of the fabric.

Stretch jersey:

1 front 2x

2

back, on a fold 1x

3 sleeve 2x

Contrasting fabric:

2 bias strips, for

size 36: 71 cm (28 ins); size 38: 72 cm (28 1/2 ins); size 40: 74 cm (29 1/4 ins); size 42: 75 cm (29 3/4 ins);

size 44: 76 cm (30 ins) long, all 5 cm (2 ins) wide -(incl. allowances).

Seam and hem allowances:

Use a ruler and tailor's chalk to mark seam and hem allowances around the paper pattern pieces: 4 cm (1 5/8 ins) for hem, 5 cm (2 ins) for sleeve hems, and 1.5 cm (5/8 in) at all other seams and edges. Cut out the fabric pieces on these lines.

Interfacing:

Cut a bias strip, for

sizes 36, 38: 140 cm (55 ins) long,

sizes 40, 42, 44: 150 cm (59 ins) long, all 5 cm (2 ins) wide (incl. allowances) and iron to wrong fabric side of bias fabric strip, overlapping edges of interfacing pieces about 2 mm (a scant 1/8 in) wide.

Transfer pattern lines to the fabric:

Transfer pattern piece outlines (seam and hem lines) and all other lines and markings on the pattern pieces, except the grain line, to the wrong fabric side with a tracing wheel (smooth edge, no teeth) and -Burda

dress-maker's carbon paper (see detailed instructions included with the pack.)

Vilene Bias Tape

Iron onto front edges, neck edges, armhole edges, and also shoulder edges of fronts (wrong fabric side) so that the line of chain stitch lies on the marked seam line.

---

### **Step 3 — Baste and Stitch**

Place right sides of fabric together to baste and stitch.

---

### **Step 4 — Seams**

Stitch seams at a shallow zigzag setting or with a special stretch stitch.

---

### **Step 5 — Backstitching**

Secure start and end of seams by backstitching.

---

### **Step 6 — Shoulder Seams**

Lay fronts right sides together with back. Pin shoulder seams, easing back edges. Stitch (1). Neaten seam allowances together and press onto back.

---

### **Step 7 — Neck Band**

Stitch bias strips together (= centre back seam). Trim seam allowances to 5 mm (3/16 in) wide and press open. Fold bias strip in half lengthwise, wrong side facing in. Press, shaping bias strip to fit template (piece 4). Check the shape by laying bias strip on template, from centre seam, so that fold edge meets neck and front edges of template. Ease in fold edge of bias strip at back neck edge and stretch open edges (2). Mark bottom ends of band on bias strip.

---

### **Step 8 — Band**

Trim away ends of band 1 cm (3/8 in) below markings. Unfold ends of band. Fold ends of band in half, right side facing in, and stitch closed, stitching 1 cm (3/8 in) from edge (3). Turn ends of band right side out again. Press. Mark joining line on band 1.6 mm (a generous 5/8 in) from fold edge.

---

### **Step 9 — Hem allowances**

Neaten hem allowances of fronts.

---

### **Step 10 — Neck and seam allowances**

Pin band right sides together with front and neck edges of jacket, from marked hem line, matching seam lines. Fold hem allowances outward and pin to front edges, over band. Stitch along front and neck edges (4). Trim seam allowances to 7 mm (1/4 in) wide and neaten together. Turn hem allowance to inside. Lay band forward and lay joining seam onto fronts and back. Press (5).

---

## Step 11 — Side Seams

Lay fronts right sides together with back. Pin side seams, laying front hem allowance down again. Stitch (6). Press seam allowances open and neaten.

---

## Step 12 — Hem

Fold hem allowance to inside and press. Neaten hem allowance of back. Work from right fabric side of garment to topstitch 3 cm (1 1/4 ins) from hem edge, with the twin machine needle, catching hem allowance.

---

## Step 13 — Sleeves

To ease sleeve caps, stitch a line of machine basting (longest stitch setting) to each side of marked seam line, from  $\hat{a}-\phi$  to  $\hat{a}-\phi$  (7). Do not yet pull bobbin threads.

Fold sleeves in half lengthwise, right side facing in. Pin sleeve seams. -Stitch. Press seam allowances open and neaten. Neaten hem allowances and press to inside. Stitch 4 cm (1 5/8 ins) from fold edges, from right side, with the twin needle.

---

## Step 14 — Setting in Sleeves

First pin each sleeve right sides together with edge of armhole, just along underarm curve, matching sleeve seam and side seam and -matching markings (5) on sleeve and front (8). Then pin shoulder mark on sleeve cap to shoulder seam. Now hold bobbin threads and gather fabric of sleeve cap along threads to fit armhole. Pin sleeve cap in place, distributing gathering evenly. Baste and stitch sleeve in place, from sleeve side (9). Lay seam allowances toward -sleeves.

---

## Step 15 — Buttonholes

Transfer buttonhole positions from the band template to right fabric side of band. Work buttonholes. Sew buttons to left band to match.

---

**BurdaStyle**

04/2010 Jacket