

Girl's Blouse 03/2012

By: burda style magazine

<http://www.burdastyle.com/projects/girls-blouse-032012>

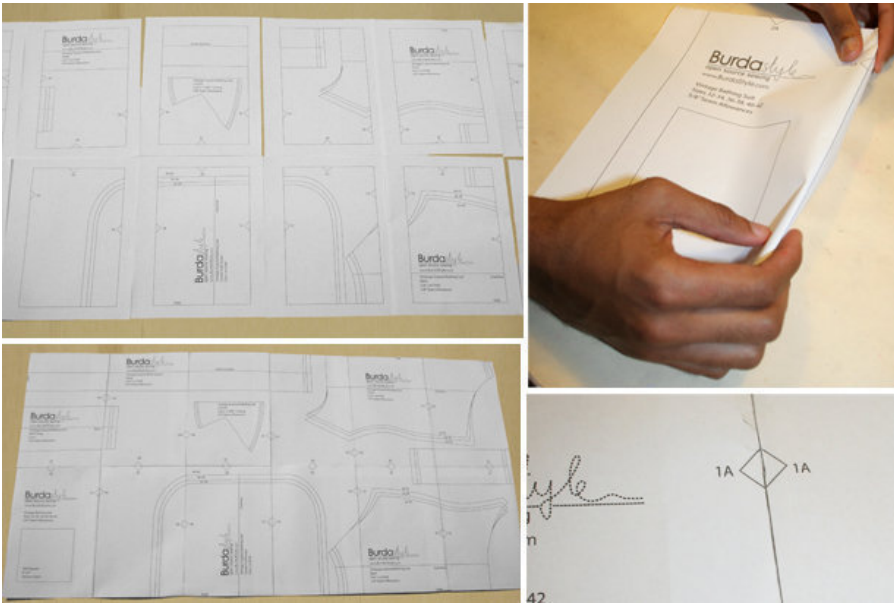


Girl's blouse sewing pattern. This is a lovely blouse with front flounce details

Materials

Batiste, width: 150 cm (59 ins) length: 0.80 m (7/8 yd).

Step 1 — Preparations



Paper cut for ANSI A (German DIN A4) prints:

This pattern is printed on 8.5 × 11 sheets of plain paper. Do not scale or center pages before printing. Wait until all sheets are printed out before beginning to tape them together. **Do not cut out pattern pieces yet**— Arrange the sheets on a large, hard, flat surface so that they fit together, matching up like numbers and letters (i.e. 6A to 6A). To tape pattern together, fold under the margin of one piece (6A) and tape right against the line of it's matching number/letter (6A).

Trace the pattern pieces from the pattern sheet following the lines and markings for the correct size. Trace front band from piece 21 as a separate pattern piece. Mark seam mark on band.

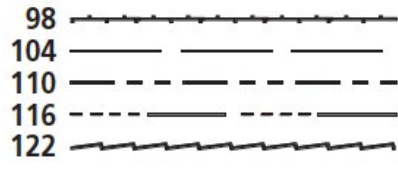
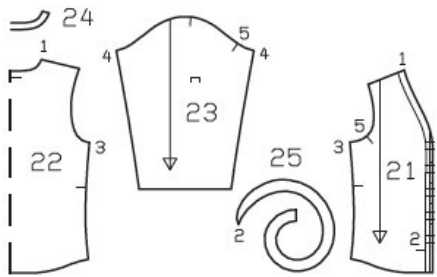
The buttonholes on piece 21 are for size 98. Sizes 104 – 122: Space bottom buttonhole the same distance from hem edge as for size 98. The top buttonhole is the same for all sizes. Mark 3 3 4 4 more buttonholes evenly in between. The band abutting line marked on piece 22 is for size 98. For the other sizes, mark this line at the same width.

burda style magazine pattern do not have seam allowance included.

Seam and hem allowances to be added: Seams 1.5 cm (5/8 in), front and neck edges 7 mm (1/4 in), bands and flounce 7 mm (1/4 in), hem and sleeve hems 1.5 cm (5/8 in).

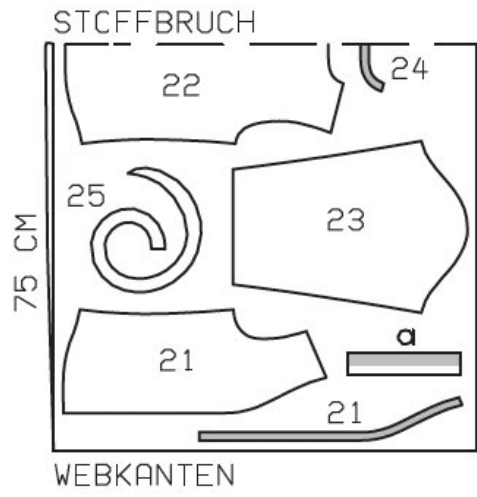
Step 2 — Cutting out

Pattern Pieces 21 to 25



Webkante = Selvage
Stoffbruch = Fabric fold

Main fabric, width 150 cm

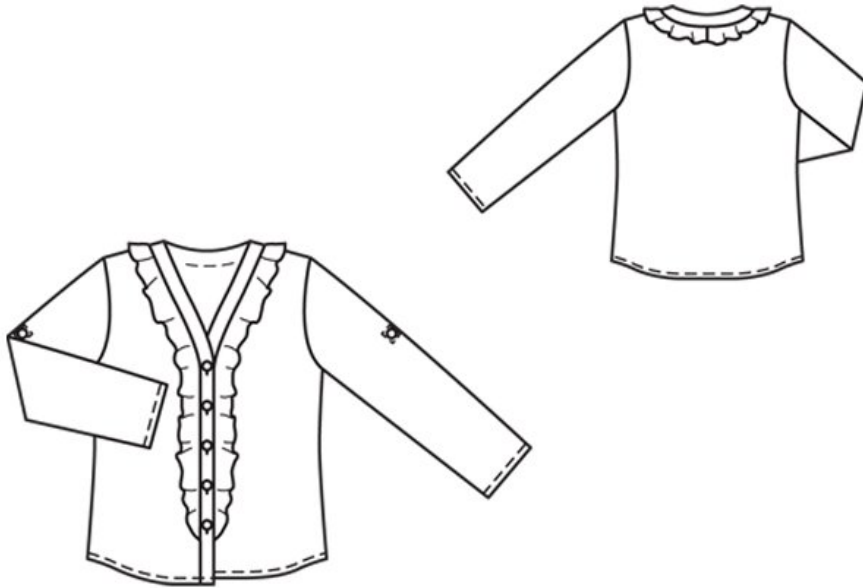


- 21 front 2x
- front band 2x
- 22 back, on a fold 1x
- 23 sleeve 2x
- 24 back neck band, on a fold 1x
- 25 flounce 2x

Also draft and cut the following pieces, not included on the pattern sheet:

- a) 2 sleeve tabs, 17, 18, 19, 20, 21 cm (6 3/4, 7 1/8, 7 1/2, 8, 8 3/8 ins) long, 4 cm (15/8 ins) wide, finished width 2 cm (3/4 in).

Step 3 — Sewing



Stitch side seams and shoulder seams. Trim seam allowances to 7 mm (1/4 in) wide, neaten together, and press onto back. Press hem allowance to inside, turn in, and stitch.

Stitch shoulder seams of bands. Press seam allowances open. Stitch centre back seam of flounce. Trim seam allowances, neaten together, and press to one side.

Neaten outer edge of flounce with closely spaced zigzag stitching: Press allowance to wrong fabric side. Work from right side to stitch along fold edge with small, closely spaced zigzag stitching. Carefully trim allowance on inside, close to stitching.

Stitch flounce to inside band edge, above marking (seam number 2). Press seam allowances onto band, then press allowance on inside band edge under, as far as lower edge. Work from inside to stitch band to front and neck edges right side of band facing wrong side of blouse. Trim seam allowances. Turn band to outside and turn band ends under. Pin band to blouse and edgestitch in place. Topstitch close to front and neck edges.

Fold each sleeve tab lengthwise, right side facing in. Stitch along long edge and across one end. Turn right side out. Topstitch tabs close to edges. Work one buttonhole in seamed end of each tab. Stitch tabs to inner sides of sleeves, along joining line tabs point up. Turn tabs down and stitch in a square and crosswise across square. Sew one button to outer side of each sleeve, at over crossed stitching lines.

Stitch sleeve seams. Press sleeve hem allowances to inside, turn in, and stitch.

Set in sleeves. Turn the garment inside out and set in sleeves in each armhole, right sides facing each other, easing the sleeve caps. Pin the sleeve to the armhole and stitch around the armhole opening. Press the seam allowance out in to the sleeve.

Work buttonholes in right front band.

BurdaStyle

Girl's Blouse 03/2012