

09/2011 Boy's shirt

By: burda style magazine

<http://www.burdastyle.com/projects/092011-boys-shirt>



Boy's shirt burda style magazine patterns FAQ

Materials

Cotton jersey

Step 1 — Preparation

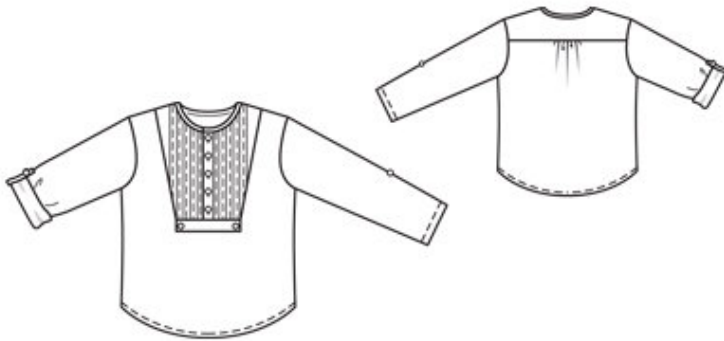


Paper cut for ANSI A (German DIN A4) prints: This pattern is printed on 8.5 × 11 sheets of plain paper. Do not scale or center pages before printing. Wait until all sheets are printed out before beginning to tape them together. **Do not cut out pattern pieces yet**— Arrange the sheets on a large, hard, flat surface so that they fit together, matching up like numbers and letters (i.e. 6A to 6A). To tape pattern together, fold under the margin of one piece (6A) and tape right against the line of it's matching number/letter (6A). **burda style magazine pattern do not have seam allowance included.** Seam and hem allowances to be added: Seams and edges 1.5 cm (5/8 in). see example here: http://www.burdastyle.com/projects/072011-jumpsuit/instructions/1” \t “_blank”
<http://www.burdastyle.com/projects/072011-jumpsuit/instructions/1>

Step 3 — Tucks

Mark 8 vertical tuck folds on the right side of the pieces of fabric use vanishing chalk, fading marker or basting thread, depending on the fabric. Mark the first tuck fold 2.5 cm (1 in) from the edge of the fabric and mark all other folds spaced 2 cm (3/4 in) apart. Press tuck folds. Topstitch 5 mm (3/16 in) from each fold. Press the tucks to the side the second fabric piece with tucks should be a mirror image of the first. Lay the template (piece 2) on one piece of fabric with tucks and pin so that front edge of pattern piece lies 5 mm (3/16 in) before stitching line of first tuck. Cut out the right front insert with 1.5 cm (5/8 in) seam allowance. Now lay the template face down on the second piece of fabric (as mirror image of first piece). Cut left front insert, with seam allowance.

Step 2 — Cutting out



Cotton jersey:

1 front, on a fold 1x

4 back, on a fold 1x

5 outer back yoke, on a fold 1x

6 sleeve 2x

Batiste:

3 fastening band 2x

5 inside back yoke, on a fold 1x

a) 2 pieces of fabric for front inserts, 29 cm (11 1/2 ins) long, 22 cm (8 3/4 ins) wide (incl. allowances),

b) lower band, 12.5 â€ 13 â€ 13 â€ 13.5 â€ 13.5 cm (5 â€ 5 1/4 â€ 5 1/4 â€ 5 3/8 â€ 5 3/8 ins) long, 2 cm (3/4 in) wide,

c) bias binding strip for neck edge, 35 â€ 36 â€ 36 â€ 37 â€ 37 cm (13 3/4 â€ 14 1/4 â€ 14 1/4 â€ 14 1/2 â€ 14 1/2 ins) long, 4 cm (5/8 ins) wide (incl. allowances),

d) 2 sleeve tabs, 13 cm (5 1/4 ins) long, 2 cm (3/4 in) wide, finished width 1 cm (3/8 in).

Interfacing: See pattern layout. Also iron interfacing to wrong side of front, over bottom corners of insert joining seam.

Step 4 — Fastening bands

Stitch the fastening bands right sides together with the vertical edges of the front inserts. Press the seam allowances of the band joining seams and of the other long edges of the bands onto the bands. Fold the bands

to the inside on the fold line and baste the inside edges in place. Topstitch the bands close to joining seams and front edges.

Step 5 — Buttonholes

Work 4 1/4" 4 1/4" 5 1/4" 5 1/4" 5 vertical buttonholes in the left front band, at centre front. Work top buttonhole 1.5 cm (5/8 in) below upper edge, then work 3 1/4" 3 1/4" 4 1/4" 4 1/4" 4 more buttonholes, spaced 3 1/4" 3.5 1/4" 3 1/4" 3 1/4" 3.5 cm (1 1/4 1/4" 1 1/2 1/4" 1 1/4 1/4" 1 1/4 1/4" 1 1/2 ins) apart. Lay the left band on the right band and baste the bottom edges together. Stitch the inserts to the front, from each seam number 2 to corner. At corners, clip allowances of front close to end of seams. Stitch insert to front, from corner to corner.

Step 6 — Lower band

On lower band, press allowances on all edges to wrong side. Lay the band on the lower joining seam of the insert so that it extends equally above and below. Edgestitch the band in place.

Step 7 — Gather

Gather the upper back edge between the asterisks.

Step 8 — Yoke

Pin the outer back yoke right sides together with the upper edge of the back. Pin the inside back yoke to inside upper edge of back, with right side facing wrong side. Stitch yokes in place together. Press yokes up. Stitch outer yoke to upper edges of front. Press the seam allowances onto the yoke. Turn in inside yoke and baste to joining seams. Topstitch yoke close to joining seams.

Step 9 — Bind neck edge

Trim away seam allowance on neck edge. Fold binding strip in half lengthwise and press, right side facing out. Unfold strip out flat again. Now turn each lengthwise edge of strip in to the pressed crease, one after the other, and press again. Unfold the pressed strip. Pin strip to inside neck edge and stitch 1 cm (3/8 in) from edge, along the fold. Turn binding up and turn ends in. Fold binding out over edge, turn edge under, and baste. Edgestitch binding in place and stitch ends closed.

Step 10 — Hem

Press hem allowances on front and back to inside, turn in, and stitch.

Step 11 — Sleeve tabs

Fold each sleeve tab lengthwise, right side in. Stitch along lengthwise edges and across one end of each. Turn right side out. Work one buttonhole (small button) in seamed end of each tab. Pin tabs to inside of sleeves as marked. Stitch from right side, in a square.

Step 12 — Armholes

Stitch sleeves to armhole edges. Stitch side seams and sleeve seams as continuous seams. Press sleeve hem allowances to inside, turn in, and stitch.

Step 13 — Buttons

Sew larger buttons to right fastening band and to ends of lower band. Sew smaller buttons to sleeves, at tab attachment points. Use sewing thread in a contrasting colour to sew on buttons.

BurdaStyle

09/2011 Boy's shirt