

# 04/2010 Shirt Dress

By: burda style magazine

<http://www.burdastyle.com/projects/042010-shirt-dress>

---

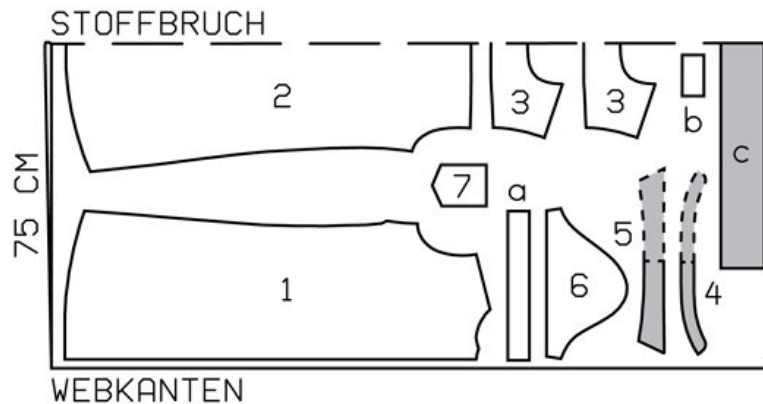
Shirt Dress burda style magazine patterns FAQ

## Materials

chambray

---

## Step 1 — Preparation



116 38-42

Trace the pattern pieces from the pattern sheet.

The buttonholes on piece 1 are marked for size 38. For sizes 40 — 46, mark the top buttonhole the same distance from neck edge as for size 38. The bottom buttonhole is the same for all sizes. Space the other buttonholes evenly in between.

Seam and hem allowances:

Seams and edges 1.5 cm (5/8 in), hem 3 cm (1 1/4 ins), no allowance on the lengthwise edge of front self-facing.

---

## Step 2 — Cutting out



- 1â—front 2x
  - 2â—back, on a fold 1x
  - 3â—yoke, on a fold 2x
  - 4â—collar band, on a fold 2x
  - 5â—collar, on a fold 2x
  - 6â—sleeve 2x
  - 7â—upper left pocket 1x
  - a) 2 sleevebands, 34.5 â— 36 â— 37.5 â— 39 â— 40.5 cm (135/8 â— 141/4 â— 143/4 â— 151/2  
â— 16 ins) long, 5 cm (2 ins) wide, finish-ed width 2.5 cm (1 in),
  - b) pocket band, 9.5 cm (33/4 ins) long, 5 cm (2 ins) wide, finished width 2.5 cm (1 in),
  - c) belt, 103 â— 107 â— 111 â— 115 â— 119 cm (403/4 â— 421/4 â— 433/4 â— 451/4 â— 47  
ins) long, 10 cm (4 ins) wide, finished width 5 cm (2 ins).
- Interfacing: See pattern layout.

### Step 3 — Bust Darts

Stitch bust darts. Press darts down.

### Step 4 — Yoke

Pin yoke pieces to upper edge of back, pinning one yoke to outside and other yoke to inside. â—Stitch yokes in place and press up. â—Stitch outer yoke to upper edges of fronts. Press seam allowances onto yoke. Turn in inside yoke edges and baste along joining seams. Topstitch yoke close to joining seams. Baste open edges

of yoke together.

---

## Step 5 — Side Seams

Stitch side seams. Press seam allowances open. Press hem allowance to inside and stitch 2 cm (3/4 in) from fold edge.

---

## Step 6 — Facings

Fold front self-facings to inside on fold line and press. Lay doubled facings to inside and press. Baste to neck edge and sew to hem edge. Top-stitch 2.5 cm (1 in) from front edges.

---

## Step 7 — Collar with collar band

Stitch collar pieces right sides together on outer edges. Trim seam allowances. Turn collar right side out and press. Topstitch 7 mm (1/4 in) from edges of collar. Lay collar band pieces right sides together, catching collar in between. Stitch along front and upper edges of collar band, beginning and ending stitching in front exactly on seam line of joining edge. Turn collar band right side out. Stitch outer collar band piece to neck edge of shirt. Press seam allowances onto collar band. Turn in inside collar band piece and baste over joining seam. Top-stitch collar band close to all edges.

---

## Step 8 — Pocket band

Fold pocket band in half lengthwise and press. Work from inside to stitch pocket band to upper edge of pocket right side facing wrong side. Turn band to outside. Stitch lower edge of band in place, 7 mm (1/4 in) from edge. Press allowances on side and lower edges of pocket to inside. Edgestitch pocket to left dress front at placement lines. Stitch small triangles at top corners of pocket.

---

## Step 9 — Sleeve Bands

Fold sleeve bands in half lengthwise and press, wrong side facing in. Work from inside to stitch sleeve bands to lower edges of sleeves right side facing wrong side. Lay bands up onto sleeves. Stitch upper edges of sleeve bands in place, 7 mm (1/4 in) from edges. Stitch sleeve seams. Press seam allowances open. Turn bottom ends of seam allowances diagonally in and sew in place.

---

## Step 10 — Sleeves

Set in sleeves, easing sleeve caps.

---

## Step 11 — Buttonholes

Work buttonholes in right blouse front and right end of collar band.

---

## Step 12 — Belt

Fold belt lengthwise, right side facing in. Trim one end at a slant. Stitch along lengthwise edge and slanted end. Turn right side out. Top-stitch belt. Fold straight end of belt over both D-rings, turn raw edge under, and

sew in place.

---

**BurdaStyle**

04/2010 Shirt Dress