

# Andrew

By: burdastyle

<http://www.burdastyle.com/projects/andrew>

---



This classic cardigan is perfect—for man or woman! Ladies, you know you're always eyeing that comfy sweater of your lovey/hubby/brother/dad. Well, now you can make one for yourself, and in the perfect fabric this time. And for the fellas, if you sew one of these up you'll give the girls something else to covet. And, of

course, this sweater will make a perfect gift!

## Materials

Wool, silk, shoulder pads, interfacing, buttons.

## Step 1

**burda Download-Pattern  
jacket 6030 - Instructions**  
normal welt

●●□□ easy

burda sizes	28 ins / 70 cm					55 ins / 140 cm						
	34	36	38	40	42	44	34	36	38	40	42	44
Jacket	yds						1,30	1,30	1,30	1,40	1,40	1,40
	m						→	→	→	→	→	→
filled knit	yds	1/4	1/4	1/4	1/4	1/4						
	m	0,50	0,50	0,50	0,50	0,50						
		→	→	→	→	→						

→ with nap

interfacing  
90 cm x 65 cm

4x

↑  
↓ 61-63 cm

right side

wrong side

interfacing

lining

batting

Patternpieces:

Feine Strickstoffe, Sweatshirtstoffe

- 1 Front piece 2x
- 2 Back piece 1x
- 3 Sleeves 2x
- 4 Front facing 2x
- 5 Back facing 1x
- 6 Front waist band 2x
- 7 Back waist band 1x
- 8 Sleeve cuff 2x

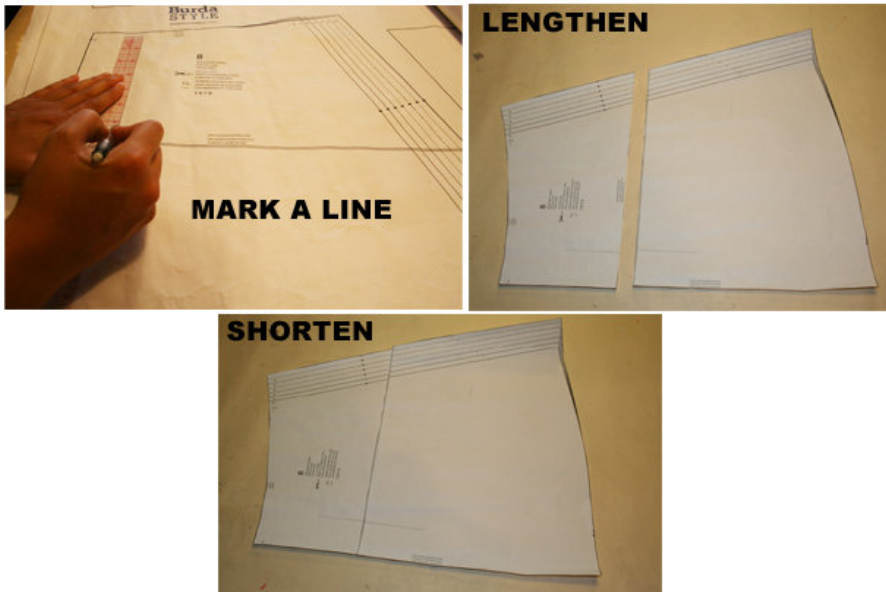
Fabrics: Knit fabrics, sweat shirt fabrics\

## Step 2



The patterns can be printed out at the copy shop. If you decide to print them at home, follow the instructions: Paper cut for ANSI A (German DIN A4) prints: The patterns are printed out on 24 sheets with a thin frame. Wait until all sheets are printed out. Arrange the sheets so that they fit together (see additional page with the overview of the prints). Fold the single sheets on the upper and right edge along the thin frame lines. Begin with the left lower sheet and then tape the frame lines together precisely.

### Step 3



#### ADJUST PATTERN SIZES

Select your size according to the Burda-dimension table: dresses, blouses, jackets and coats according to the bust size, trousers and skirts according to the hip width. Change the pattern to fit your measurements if they deviate from the Burda-size chart. Cut out the pattern according to your size.

Refer to our *Adjust patterns for mixed sizes* technique

Sizes 36 to 44 (EU 46 to 54): Mark the spots x for the snap buttons on piece 1. Position the top button with the same space to the neckline edge as size 34; the spot for the bottom button is same for all sizes. The third one will be placed in the middle between the top and bottom ones.

**LENGTHENING OR SHORTENING THE PATTERN PIECES** Our pattern is calculated for a height of 5â— 6â— (168 cm). If you are taller or shorter, you can adjust the pattern pieces along the lines marked “lengthen or shorten here”. This way the proper fit is maintained. Always adjust all pattern pieces along the same line to the same degree

How to lengthen and shorten pattern pieces: Cut the pattern pieces along the marked lines

To lengthen, slide the two halves of the pattern piece as far apart as necessary.

To shorten, overlap the two halves of the pattern piece as far as necessary. Blend the side edges.

---

## **Step 4**

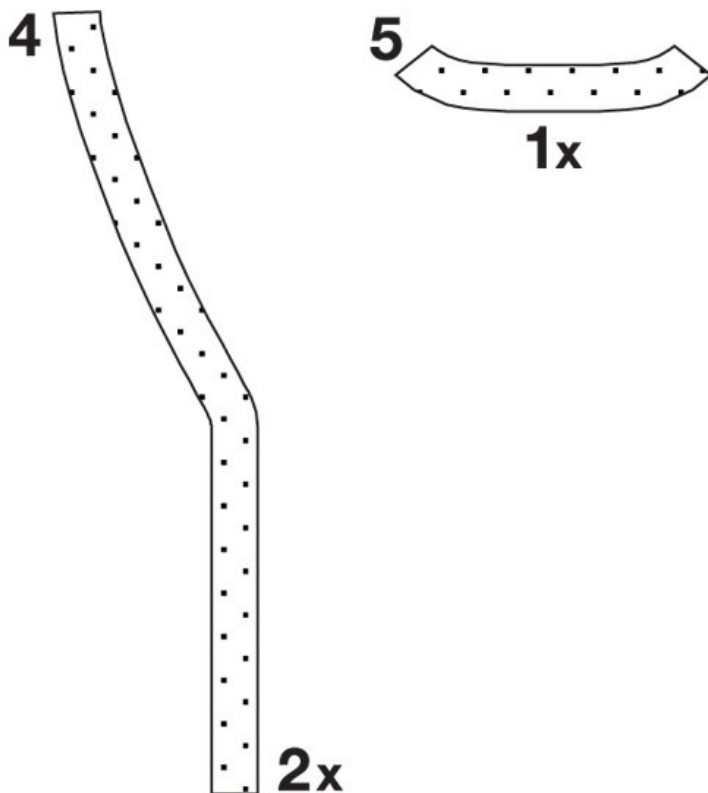


CUTTING OUT FOLD (— — — — ) means: Cut on the fold, the fold being the center of the pattern piece, but never a cut edge or seam. The piece should be cut double, with the fold line forming the center line. Pattern pieces that are outlined with a broken line in the cutting diagrams are to be placed face down on the fabric. The cutting diagrams on the pattern sheet show how the pattern pieces should be placed on the fabric.

The cutting diagrams show the placement of the pattern on the fabric. For a single layer of fabric, the pattern pieces are pinned to the right side. For double layers of fabric, the right sides are facing and the pattern pieces are pinned to the wrong side. The pattern pieces that are shown extending over the fold of the fabric in the cutting diagram should be cut last from a single layer of fabric. Cut pieces 6 to 8 from rib knit fabric.

## Step 5

### INTERFACING



SEAM AND HEMLINE ALLOWANCES are included on an average: 1  $\frac{1}{2}$  (4 cm) for the hemline,  $\frac{5}{8}$  (1.5 cm) for all edges and stitches. Using BURDA copying paper, transfer the lines and signs of the pattern onto the wrong fabric side. Instructions can be found in the packaging.

### SEWING

While sewing, the right sides of the fabric are facing. Transfer all lines of the pattern onto the right side of the fabric using basting stitches.

### INTERFACING

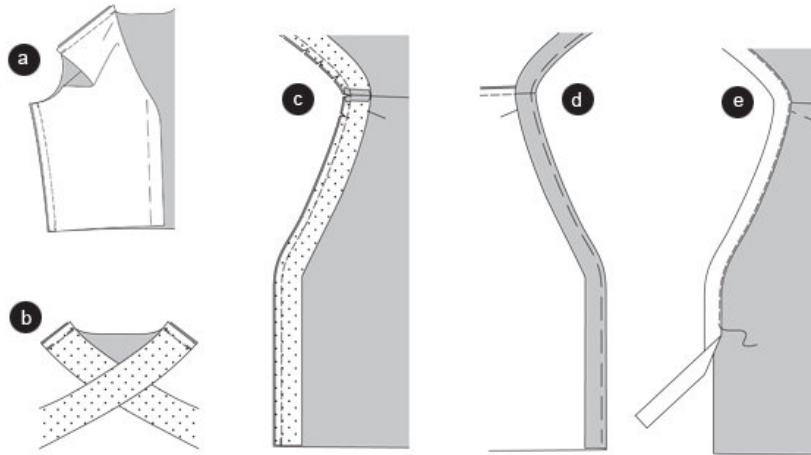
Press the interfacing piece according to the cutting diagram onto the wrong side of the fabric.

### ADVICE FOR WORKING WITH STRETCHY FABRICS:

You can achieve the best results from working with stretchy fabrics when using an Overlock machine. The seams will be especially elastic so that they won't rip when wearing the garment. If you don't have an Overlock machine, stitch the seams using a special elastic stitch or a narrowly adjusted zigzag stitch. Be aware that the thread tension shouldn't be too tight. For delicate knit fabrics use a Jersey or ballpoint needle that has a rounded needle point and won't damage the fabric.

---

## Step 6



### JACKET

#### Shoulder and side seams

Position the front and back pieces together, right sides facing. Pin the shoulder seams (seam 1) and side seams (seam 3). Stitch seams. Trim allowances and press inside the back piece (a).

#### FRONT EDGES — NECKLINE/FACING

Position front and back facing together, right sides facing. Stitch shoulder seams (seam 2). Press allowances. Neaten the inner facing edge (b).

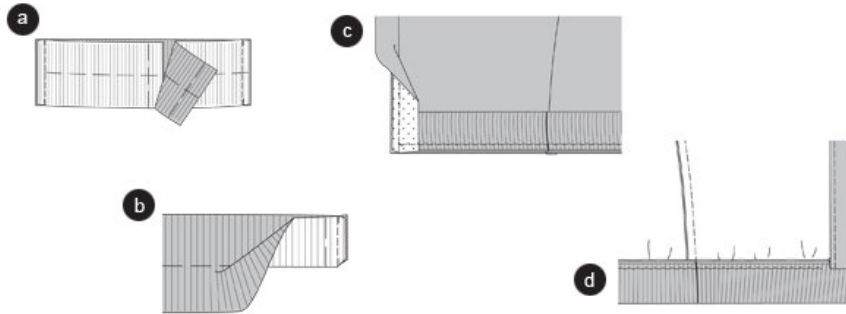
Pin the facing on the front edges and the neckline, right sides facing and shoulder seams meet. Stitch facing. Trim allowances and snip in ©.

Turn the facing inside, pin and press. **ADVICE:** If, due to your choice of fabric for the jacket, facing would make it too sturdy, you could neaten the edges using woven trim. You need a length of 62 inches woven trim, 1 1/2" (3 cm) wide (d).

Baste the woven trim on the front edges and neckline edges, wrong side faces the right side, so that the inner edge is placed 1 1/2" (1.5 cm) next to the edge. Topstitch the woven trim. Trim the jacket allowances (e).

---

## Step 7



## WAIST BAND

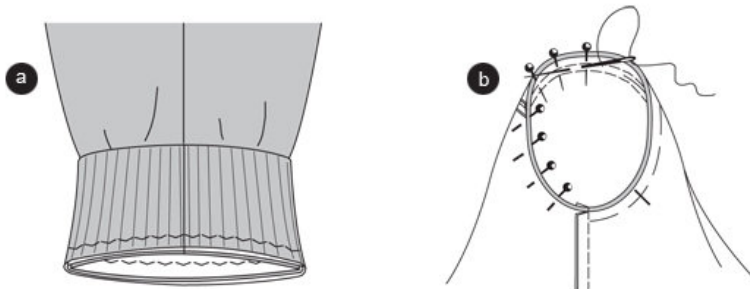
Position the front and back pieces of the waistband together, right sides facing. Stitch the **SIDE SEAMS** (seam 4). Open the allowances (a).

Fold the waistband into half, right sides facing. Stitch the front edges together. Trim allowances. Turn the waistband, wrong sides facing. Pin the open edges together. Cut the basting stitches along the bottom edges. Flip the facings (b).

Pin the stretched out waistband on the bottom jacket edge (seam 5), side seams meet. Turn the facings, woven trims respectively, to the outside, pin. Stitch the waistband using a flatly adjusted zigzag stitch. Trim allowances and neaten ©.

Turn the facings back to the inside and pin. Press. Stitch the front edges and the neckline  $1\frac{1}{2}$  (3 cm) wide and sandwich the facing. Turn the woven trim inside, pin and press. Topstitch the inner edge of the woven trim (d).

## Step 8



## SLEEVE SEAMS

Fold the sleeves lengthwise, right sides facing. Stitch the sleeve seams (seam 6), neaten and press to the side.

## SLEEVE CUFF

Close the sleeve cuff to a circle, stitch. Open the allowances. Fold the sleeve cuff into half; pin the open edges, wrong sides facing.

Pin the stretched out cuff on the bottom edge of the sleeve. The seams meet. Stitch the cuff with flatly adjusted zigzag stitch (seam 8). Trim allowances and neaten (a).

## APPLY SLEEVE

Pin the sleeve on the armhole, right sides facing. When applying the sleeve 3 points are important for the right fit :

The cross lines 7 of sleeve and front piece have to meet. Sleeve and side seams have to meet. The cross line of the sleeve curve has to meet the sign on the shoulder. Pin the sleeve from the sleeve side and stitch. Trim allowances, neaten and press inside the sleeve (b).

Work the SNAP BUTTON top pieces into the markings on the left front edge and the waistband. Work the snap button bottom pieces in the edge of the front center. Instead of snap buttons you can work BUTTON HOLES into the left edge and apply BUTTONS on the right edge.

---

**BurdaStyle**

Andrew