

5/2010 Girls' Dress

By: burda style magazine

<http://www.burdastyle.com/projects/52010-girls-dress>

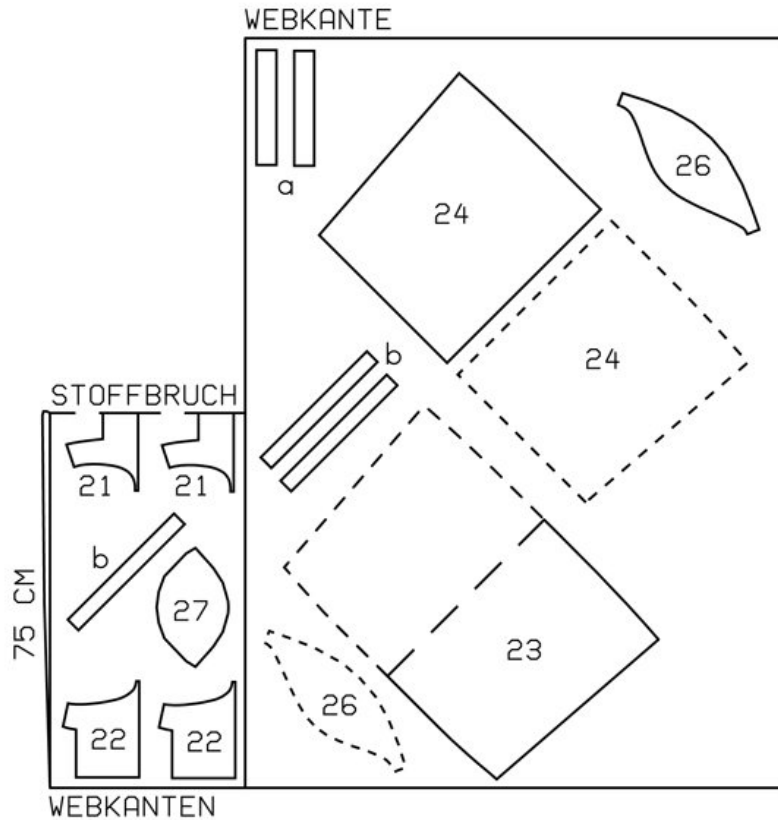


Girls' Dress burda style magazine patterns FAQ

Materials

Plaid fabric

Step 1 — Preparation



151 104-128

Trace the pattern pieces from the pattern sheet.

The buttonholes on piece 22 are marked for size 104. For sizes 110 to 128, mark the top buttonhole the same distance from neck edge as for size 104. The bottom buttonhole is in the same place for all sizes. Centre the other buttonhole in between. Lay pieces 22 and 24 together. Work 5 more buttonholes for sizes 104, 110 and 6 buttonholes for sizes 116 to 128 at the same spacing.

Seam and hem allowances:

Seams and edges 1.5 cm (5/8 in), hem 5 cm (2 ins), no allowance on length-wise edge of facing on piece 24.

Step 2 — Cutting Out



21âˆ—front, on a fold 2x

22âˆ—back 4x

23âˆ—front skirt panel, on a fold 1x

24âˆ—back skirt panel 2x

26âˆ—sleeve 2x

27âˆ—pocket 2x

a) 2 sleeve bands, 23 âˆ— 23.5 âˆ— 24 âˆ— 24.5 âˆ— 25.5 cm (91/8 âˆ— 91/4 âˆ— 91/2 âˆ— 93/4 âˆ— 101/8 ins) long, 4 cm (11/2 ins) wide, finished width 2 cm (3/4 in),

b) 4 drawstring bands, cut on bias, 30 cm (12 ins) long, 2 cm (3/4 in) wide (incl. allowance).

Step 3 — Bodice

Stitch side seams and shoulder seams of bodice. Lay outer and inner front and back pieces right sides together. Stitch along neck edge. Trim seam allowances and clip into corners. Turn right side out and press neck edge. Baste edges of armholes together.

Step 4 — Sleeve seams and bands

Stitch sleeve seams. Gather lower edges of sleeves to fit sleeve bands. Stitch ends of each sleeve band together to a ring. Stitch sleeve bands to lower edges of sleeves. Press seam allowances of joining seams onto sleeve bands. Fold sleeve bands half to inside, turn raw edge under over joining seam, and baste. Topstitch sleeve bands close to joining seam.

Step 5 — Setting in sleeves

Gather sleeves. Set in sleeves.

Step 6 — Skirt panels

Stitch side seams of skirt panels. Press hem allowance to inside and stitch 4 cm (15/8 ins) wide. Fold self-facings to inside on fold line and press. Gather upper edge of skirt panels between asterisks.

Step 7 — Stitching skirt to bodice

Stitch skirt to bodice, not catching inner layer. Trim seam allowances to 7 mm (1/4 in) wide and press up. Turn in inside edge of bodice and sew in place along skirt joining seam. Trim self-facings of bodice to width of skirt facings and neaten edges.

Step 8 — Facings

Lay facings to inside and press. Topstitch 2.5 cm (1 in) from back edges.

Step 9 — Buttonholes

Work buttonholes along right back fastening edge.

Step 10 — Pockets

Neaten upper edges of pockets with closely spaced zigzag stitching: Press allowance to wrong fabric side. Stitch from right fabric side, along fold edge, with short, closely spaced zigzag stitching. Trim allowance carefully, close to stitching. . Work openings (like buttonholes) for drawstrings in upper edges of pockets, first ironing small pieces of interfacing to wrong side of fabric for reinforcement. Press allowances on rounded edges of pockets to inside. Pin bias tape under upper edges of pockets, at marked casing lines, and turn in ends of tape. Stitch as marked to form casing. Sew very narrow drawstrings with the bias fabric strips. Insert drawstrings into casing from side edges of each pocket, pass ends out through openings at centre of pocket, and knot. Sew side ends of drawstrings in place. Pin pockets to front skirt panel at placement lines. Edgestitch pockets in place and stitch again 7 mm (1/4 in) from edges.

BurdaStyle

5/2010 Girls' Dress