

# 4/2010 Peasant Blouse

By: burda style magazine

<http://www.burdastyle.com/projects/42010-peasant-blouse>

---

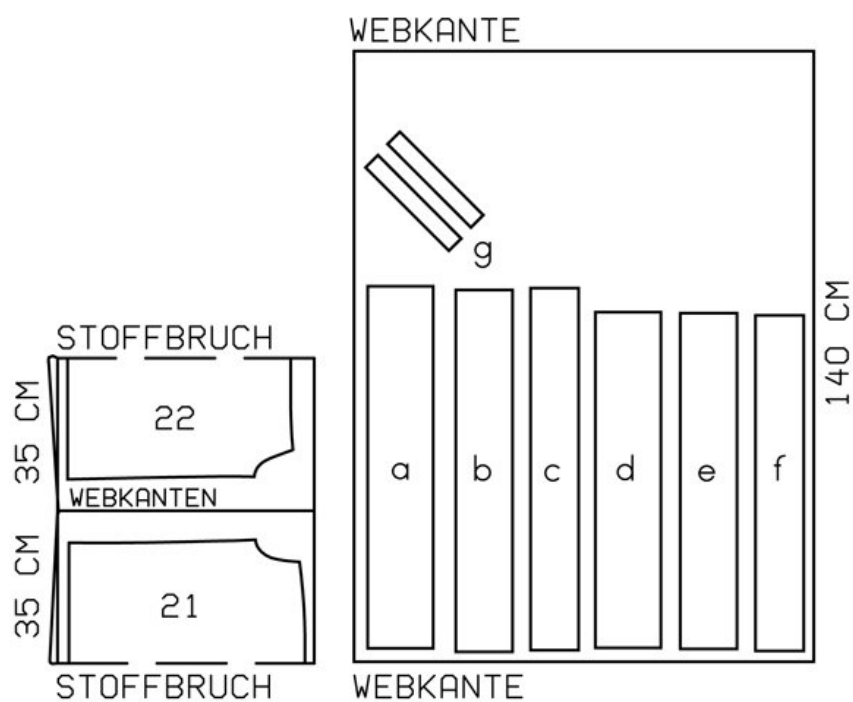
Peasant Blouse burda style magazine patterns FAQ

## Materials

Silk batiste

---

## Step 1 — Preparation



112 A 34-42

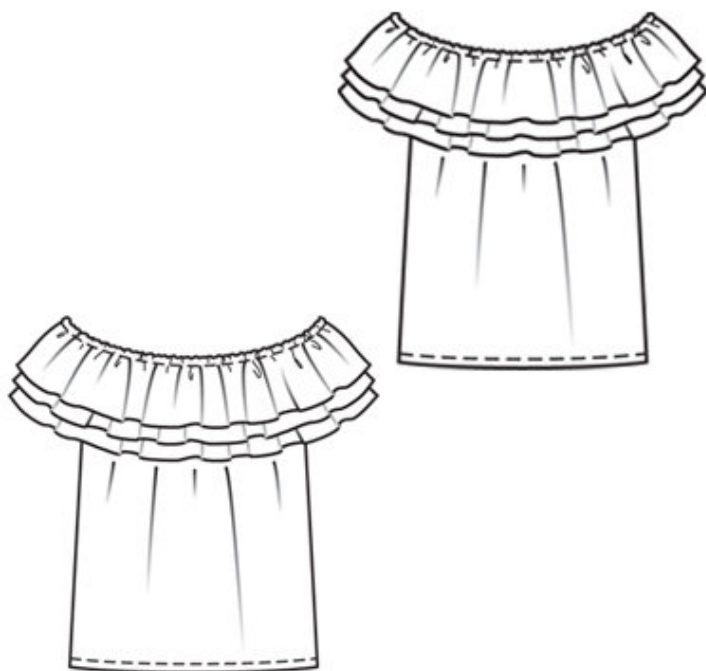
Trace the pattern pieces from the pattern sheet. Note different hem lines for views A and B.

Seam and hem allowances:

Seams, edges and 1.5 cm (5/8 in), hem for view B 2 cm (3/4 in).

---

## Step 2 — Cutting Out



21â— front, on a fold 1x

22â— back, on a fold 1x

a â— c) 3 front frills, each 78 â— 80 â— 83 â— 85 â— 88 cm (303/4 â— 311/2 â— 323/4 â— 331/2 â— 343/4 ins) long, once 15 cm (6 ins) wide, once 13 cm (51/4 ins) wide, and once 11 cm (43/8 ins) wide,

d â— f) 3 back frills, each 73 â— 75 â— 77 â— 79 â— 81 cm (283/4 â— 293/4 â— 301/2 â— 311/4 â— 32 ins) long, once 15 cm (6 ins) wide, once 13 cm (51/4 ins) wide, and once 11 cm (43/8 ins) wide,

g) 2 bias strips for armholes, 25 â— 26 â— 27 â— 28 â— 29 cm (10 â— 101/4 â— 103/4 â— 111/8 â— 111/2 ins) long, 4 cm (15/8 ins) wide (incl. allowance).

---

## Step 3 — Side seams

Stitch side seams. Trim seam allowances to 7 mm (1/4 in) wide, neaten together, and press onto back.

---

## Step 4 — Bias strips

Fold bias strips for armholes in half lengthwise and press, right side facing out. Stitch each folded bias strip to edge of armhole so that fold edge of strip lies on garment piece, 7 mm (1/4 in) past seam line. Trim allowances. Turn bias strips to inside. Topstitch 5 mm (3/16 in) from armhole edges.

---

## Step 5 — Frills

Stitch together narrow edges of each pair of front and back frills of the same width. Neaten lower edges of frills with closely spaced zigzag stitching. Press allowance to wrong side of fabric. Work from right side to stitch along fold edge at a short, closely spaced zigzag setting. Carefully trim allowance close to stitching. Lay frills one on the other with wrong side facing right side and with narrowest frill on top. Baste upper edges together, matching seams. Mark centre front and back. Pin frills to front and back neck edges, with wrong side facing right side and matching centres. Leave frills extending at edges of armholes. Stitch frills to neck edges and stitch upper edges of frills together, as continuous seams. Neaten seam allowances together. Press to inside and stitch 1 cm (3/8 in) from edge to form elastic casing, leaving a section of seam open to insert elastic. Insert elastic. Stitch ends together for a circumference of 86 — 90 — 94 — 98 — 102 cm (34 — 34 1/2 — 37 — 38 3/4 — 40 1/4 ins). Sew opening closed.

---

## Step 6 — Hem

Lay hem allowance to inside, turn half in, press, and stitch.

---

## Step 7 — Sequinned fabric

Cut shapes of sequinned fabric as desired, place on frill and sew in place.

---

**BurdaStyle**

4/2010 Peasant Blouse