

10/2011 Plus-size Satin trousers

By: burda style magazine

<http://www.burdastyle.com/projects/102011-plus-size-satin-trousers>



Satin trousers burda style magazine patterns FAQ

Materials

Wool satin

Step 1 — Preparation



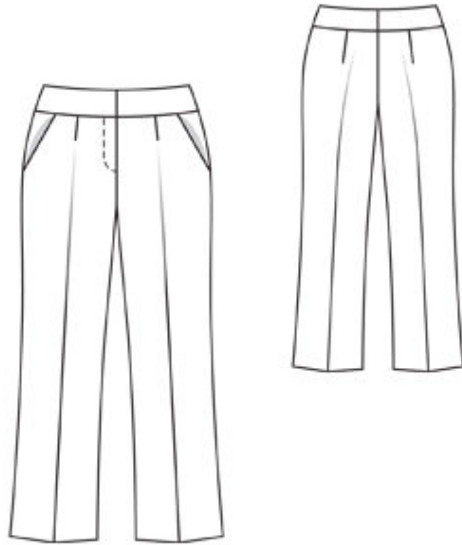
Paper cut for ANSI A (German DIN A4) prints:

This pattern is printed on 8.5 × 11 sheets of plain paper. Do not scale or center pages before printing. Wait until all sheets are printed out before beginning to tape them together. **Do not cut out pattern pieces yet**— Arrange the sheets on a large, hard, flat surface so that they fit together, matching up like numbers and letters (i.e. 6A to 6A). To tape pattern together, fold under the margin of one piece (6A) and tape right against the line of it's matching number/letter (6A).

burda style magazine pattern do not have seam allowance included.

Seam and hem allowances to be added: Seams and edges 1.5 cm (5/8 in).

Step 2 — Cutting out



21â—front trouser piece 2x

â—â—â—pocket piece 2x

22â—side hip yoke with

â—â—â—â—integrated pocket piece 2x

23â—back trouser piece 2x

24â—front waistband 4x

25â—back waistband 4x

a) left underlap piece, 15 cm (6 ins) long, 7 cm (3 ins) wide, finished width 3.5 cm (1 1/2 ins).

Interfacing: Iron to wrong side of waistband pieces.

Step 3 — Darts

Stitch all darts. Press to centre.

Step 4 — Front

Fold front trouser pieces lengthwise, wrong side facing in. Press creases.

Step 5 — Hip yoke pockets

Stitch pocket pieces right sides together with pocket opening edges of front trouser pieces. Turn pocket pieces up and stitch to seam allowances, close to seam. Turn pocket pieces to inside. Pin pocket opening edges to side hip yokes at abutting lines. Stitch edges of pocket pieces together. Baste pocket pieces to wrong

side of trouser fronts, first trimming away allowance at centre front of right pocket piece

Step 6 — Side seams

Stitch side seams and inside leg seams. Press seam allowances open. Stitch centre front seam from slit mark to inside leg seam.

Step 7 — Zip

Zip opening: Press self-facings on opening edges to inside. On right edge, stitch along centre front. On left edge, stitch 5 mm (3/16 in) before centre front. Stitch zip under left edge of opening (underlap), close to teeth of zip. Pin opening closed, matching centre fronts. Stitch loose zip tape to right facing, not catching trouser piece. Baste facing in place. Topstitch opening from top to 3 cm (1 1/4 ins) before end, as marked. Fold underlap piece lengthwise. Stitch across bottom end. Turn right side out. Lay underlap under left opening edge and pin to facing. Stitch facing to underlap, close to zip joining seam. Lay opening closed again and topstitch to the end, catching underlap.

Step 8 — Waistband and centre back seam

Stitch side seams on waistband units. Stitch outer waistband units to upper trouser edges, leaving right end of waistband extending from centre front. Stitch left end of waistband to underlap of opening edge. Press allowances of joining seams onto waistband pieces. Lay inside waistband units right sides together with attached waistband units and stitch upper edges together. Turn inside waistband units up. Press seam allowances open. Stitch centre back seam of trousers, also stitching across ends of waistband. Trim extending right end of waistband to 1 cm (3/8 in) before centre front. Attach hooks and bars to inside waistband piece, one 1.5 cm (5/8 in) from upper edge and one 1.5 cm (5/8 in) from lower edge of waistband, and each 1 cm (3/8 in) from right end of waistband. Turn inside waistband to outside. Stitch across front end of waistband. Trim seam allowances. Turn waistband right side out. Turn in inside edge of waistband, approx. 4 cm (1 5/8 ins) long, and baste in place, then lay remaining edge flat over joining seam. Work from right side to stitch along line of joining seam, catching inside edge of waistband. Attach bars of fasteners to waistband.

Step 9 — Hem

Press hems to inside. Sew by hand.

Step 10 — Creases

Press creases on back trousers. On fronts, repress creases in hem.

BurdaStyle

10/2011 Plus-size Satin trousers