

10/2011 Plus size top with draped neckline

By: burda style magazine

<http://www.burdastyle.com/projects/102011-plus-size-top-with-draped>



Top with hanging collar burda style magazine patterns FAQ

Materials

Wool jersey

Step 1 — Preparation



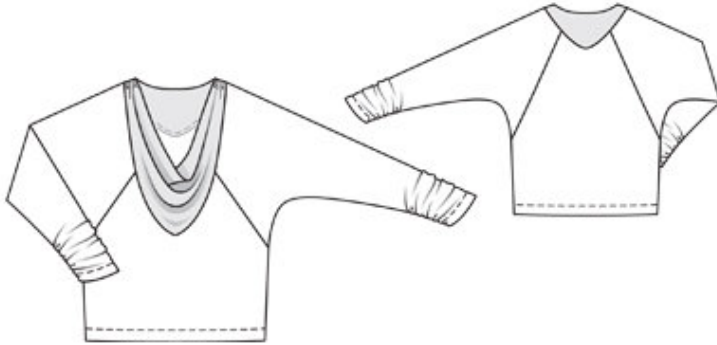
Paper cut for ANSI A (German DIN A4) prints:

This pattern is printed on 8.5 × 11 sheets of plain paper. Do not scale or center pages before printing. Wait until all sheets are printed out before beginning to tape them together. **Do not cut out pattern pieces yet**— Arrange the sheets on a large, hard, flat surface so that they fit together, matching up like numbers and letters (i.e. 6A to 6A). To tape pattern together, fold under the margin of one piece (6A) and tape right against the line of it's matching number/letter (6A).

burda style magazine pattern do not have seam allowance included.

Seam and hem allowances to be added: Seams and edges 1.5 cm (5/8 in).

Step 2 — Cutting out



Jersey:

21—front, on a fold 1x

22—back, on a fold 1x

24—sleeve 2x

Poplin (contrasting fabric):

25—front insert, on a fold 1x

23—back insert, on a fold 2x

Interfacing

Iron pieces of interfacing to wrong sides of front and back, over bottom corners of insert joining seam. Iron Vilene Bias Tape/stay tape to wrong side of back neck edge.

Step 3 — Sleeves

Stitch sleeves to front and back (seam numbers 1 and 2). Trim seam allowances, neaten together, and press onto sleeves. Stitch side seams and sleeve seams each as continuous seams. Press allowances to one side.

Step 4 — Insert pieces

Lay back insert pieces right sides together, stitch along neck edge. Trim seam allowances. Do not yet turn insert right side out. Fold front insert on fold line, wrong side facing in, and baste edges together. Do not press fold edge. Gather front shoulder edges to 3.5 cm (1 1/2 ins). Push front shoulder edges through the as-yet- unturned back shoulder edges, right fabric sides of front and back insert are facing. Stitch shoulder

seams. Turn back insert right side out. Press back neck edge. Baste open edges together. Stitch insert to upper edge of front, sleeves, and back, clipping seam allowance of front and back at centre front and centre back. Press seam allowances away from insert.

Step 5 — Gathering

For the gathering on sleeve seams, mark ends of elastic, 3 cm and 19 cm (1 1/4 ins and 7 1/2 ins) from sleeve hem line. Cut two pieces of elastic, each 11 cm (4 3/8 ins) long. Lay elastic on seam allowances and pin ends in place as marked. Stretch elastic and stitch to seam allowances with zigzag stitching.

Step 6 — Hem

Turn hem allowances of top and sleeves to inside. Stitch hems 3.5 cm (1 1/2 ins) from edge, using the twin machine needle.

BurdaStyle

10/2011 Plus size top with draped neckline