

# Nancy

By: burdastyle

<http://www.burdastyle.com/projects/nancy>

---



Just in time for the cooler weather, we have this amazing Plus Size coat for you! The stunning yoke frames your face and keeps your shoulders extra toasty, and the back detail accentuates your figure. We used a lovely heavy wool for the main fabric, and black silk organza for the details, which adds a real sense of high

drama to your winter wardrobe.

## Materials

4 yards self fabric, 1 1/4 organza or chiffon, 2 3/4 yards lining, 11 buttons, 2 shoulder pads, store-bought or self-made 1 1/2 yard fold-over bias binding for around the pockets and yoke, interfacing

## Step 1

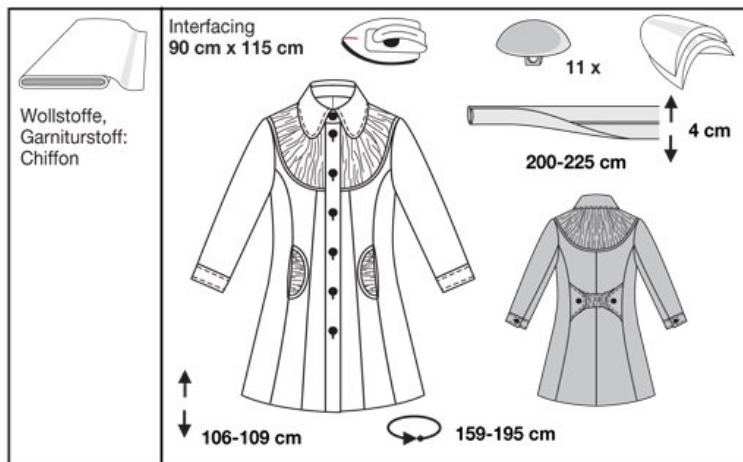
### burda Download-Pattern 6036 - Instructions

●●● average

semi fitted

burda sizes		55 ins / 140 cm						
		46	48	50	52	54	56	58
Coat	yds	3 <sup>3</sup> / <sub>8</sub>	3 <sup>3</sup> / <sub>8</sub>	3 <sup>3</sup> / <sub>8</sub>	4 <sup>1</sup> / <sub>8</sub>	4 <sup>1</sup> / <sub>8</sub>	4 <sup>1</sup> / <sub>8</sub>	4 <sup>1</sup> / <sub>8</sub>
	m	3.30	3.30	3.30	3.70	3.70	3.80	3.80
Contrasting fabric	yds	1 <sup>1</sup> / <sub>8</sub>	1 <sup>1</sup> / <sub>8</sub>	1 <sup>1</sup> / <sub>8</sub>	1 <sup>1</sup> / <sub>8</sub>	1 <sup>1</sup> / <sub>8</sub>	1 <sup>1</sup> / <sub>8</sub>	1 <sup>1</sup> / <sub>8</sub>
	m	1.00	1.00	1.00	1.00	1.00	1.00	1.00
Lining	yds	2 <sup>3</sup> / <sub>8</sub>	2 <sup>3</sup> / <sub>8</sub>	2 <sup>3</sup> / <sub>8</sub>	2 <sup>3</sup> / <sub>8</sub>	2 <sup>3</sup> / <sub>8</sub>	3 <sup>1</sup> / <sub>8</sub>	3 <sup>1</sup> / <sub>8</sub>
	m	2.30	2.30	2.30	2.50	2.50	2.75	2.75

→ with nap



- 1 Center front piece 2x
- 2 Mid front piece 2x
- 3 Side front piece 2x
- 4 Center back piece 2x
- 5 Side back piece 2x
- 6 Front placket 2x
- 7 Front yoke 2x
- 8 Back yoke 1x
- 9 Collar 2x
- 10 Collar stand 2x
- 11 Upper sleeve 2x
- 12 Undersleeve 2x
- 13 Cuff 2x
- 14 Pocket pouch 2x
- 15 Pocket flap 2x

- 16 Side back bar 4x
- 17 Center bar 2x
- Contrasting fabric:
- 18 Front yoke 2x
- 19 Back yoke 1x
- 20 Pocket flap 2x
- 21 Center back bar 1x

Fabrics: wool fabrics; application fabric: chiffon

---

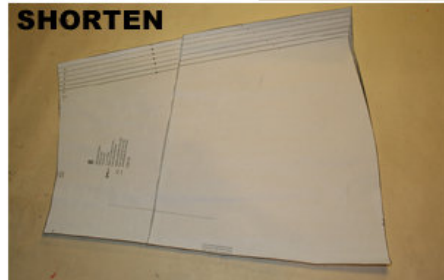
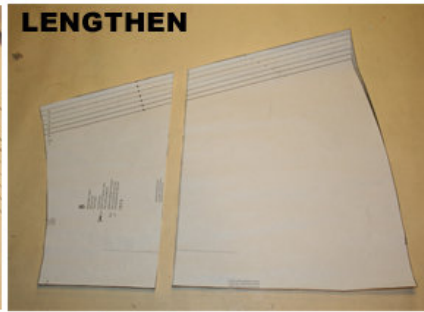
## Step 2



The patterns can be printed out at the copy shop. If you decide to print them at home, follow the instructions: Paper cut for ANSI A (German DIN A4) prints: The patterns are printed out on 63 sheets with a thin frame. Wait until all sheets are printed out. Arrange the sheets so that they fit together (see additional page with the overview of the prints). Fold the single sheets on the upper and right edge along the thin frame lines. Begin with the left lower sheet and then tape the frame lines together precisely.

---

## Step 3



#### ADJUST PATTERN SIZES

Select your size according to the Burda-dimension table: dresses, blouses, jackets and coats according to the bust size, trousers and skirts according to the hip width. Change the pattern to fit your measurements if they deviate from the Burda-size chart. Cut out the pattern according to your size.

Sizes 18 to 28 (EU 48 to 58) Mark the buttonholes on piece 6; the top one with the same space to the neckline as for size 16 (EU 46); the bottom hole has the same position for all sizes. Distribute the other buttonholes, equally spaced in between the top and bottom hole.

Refer to our “Adjust patterns for mixed sizes” technique

**LENGTHENING OR SHORTENING THE PATTERN PIECES** Our pattern is calculated for a height of 5â€ 6â€ (168 cm). If you are taller or shorter, you can adjust the pattern pieces along the lines marked “lengthen or shorten here”. This way the proper fit is maintained. Always adjust all pattern pieces along the same line to the same degree.

How to lengthen and shorten pattern pieces: Cut the pattern pieces along the marked lines

To lengthen, slide the two halves of the pattern piece as far apart as necessary.

To shorten, overlap the two halves of the pattern piece as far as necessary. Blend the side edges.

---

## Step 4

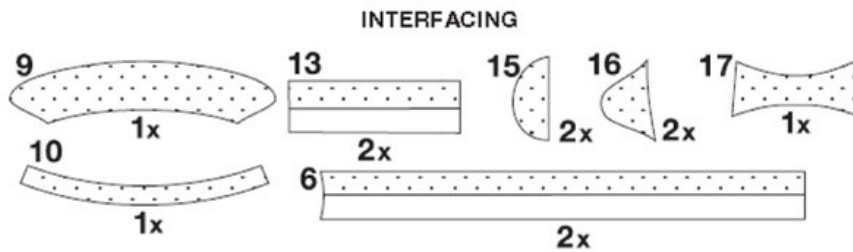


**CUTTING OUT FOLD** (â“ â“ â“ â“ ) means: Cut on the fold, the fold being the center of the pattern piece, but never a cut edge or seam. The piece should be cut double, with the fold line forming the center line. Pattern pieces are outlined with a broken line in the cutting diagrams are placed face down on the fabric. The cutting diagrams on the pattern sheet show how the pattern pieces should be placed on the fabric.

The cutting diagrams show the placement of the pattern on the fabric. For a single layer of fabric, the pattern pieces are pinned to the right side. For double layers of fabric, the right sides are facing and the pattern pieces are pinned to the wrong side. The pattern pieces that are shown extending over the fold of the fabric in the cutting diagram should be cut last from a single layer of fabric.

Application fabric: Cut pieces 18 to 21 from the contrasting fabric according to the cutting diagram.

## Step 5



SEAM AND HEMLINE ALLOWANCES are included on an average: 1 1/2" (4 cm) for the hemline, 5/8" (1.5 cm) for all edges and stitches. Using BURDA copying paper, transfer the lines and signs of the pattern onto the wrong fabric side. Instructions can be found in the packaging.

LINING Cut the lining according to the pattern pieces 1 to 5, 11, 12 and 14. See the cutting diagrams.

### INTERFACING

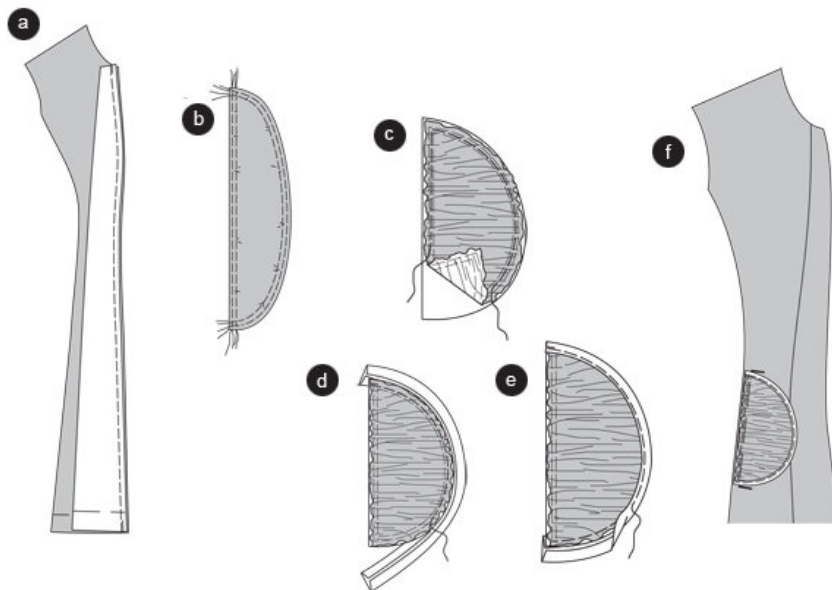
Press the interfacing onto the wrong fabric sides according to the cutting diagram.

### SEWING

While sewing, the right sides of the fabric are facing. Transfer all lines of the pattern onto the right side of the fabric using basting stitches.

---

## Step 6



### COAT

Center front princess seams

Position the mid front pieces on the center front pieces, right sides facing. Pin the princess seams (seam 1)

and stitch. Trim allowances, neaten and press inside the center front pieces (a).

### POCKET FLAPS

Using basting stitches, double stitch the chiffon flap pieces (piece 20) along the edges. Tighten the bobbin threads to the length of the fabric flaps. Knot thread ends (b).

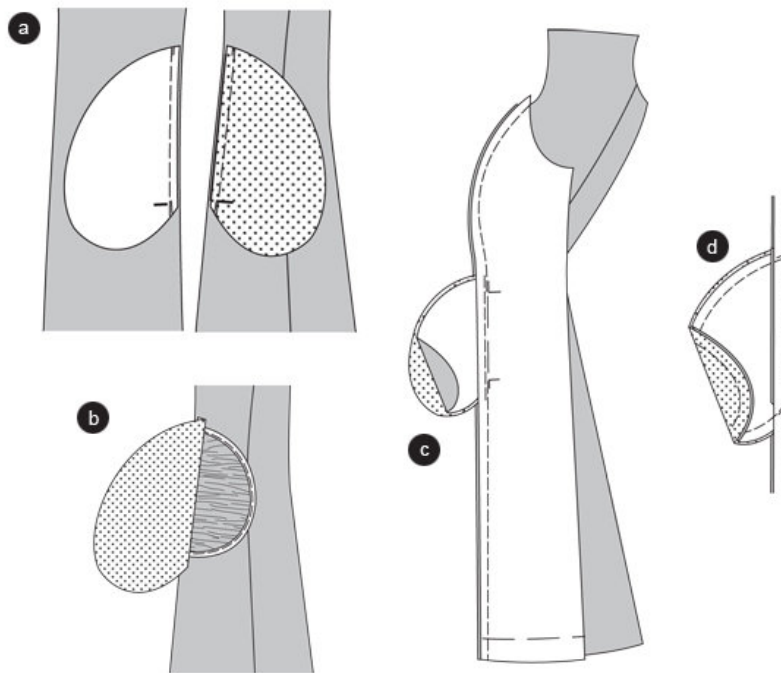
Position the chiffon flaps on the fabric flaps, wrong sides facing. Pin the edges and stitch ©.

Enclose the rounded flap edge: pin the doubled flap with its fabric side onto the hemmed satin bias strip; the edge meets the center of the strip. Topstitch narrowly (d). Turn the strip over the edge to the chiffon side of the flap, pin and topstitch narrowly (e).

Pin the flaps between the cross lines onto the mid front pieces.

---

## Step 7



### PRINCESS SEAMS / POCKETS

Pin the lining pocket pouches on the mid front pieces, right sides facing. Pin the fabric pocket pouches onto the side front pieces. The cross lines meet. Stitch and sandwich the flaps on the edge of the mid front piece. Secure seam ends (a).

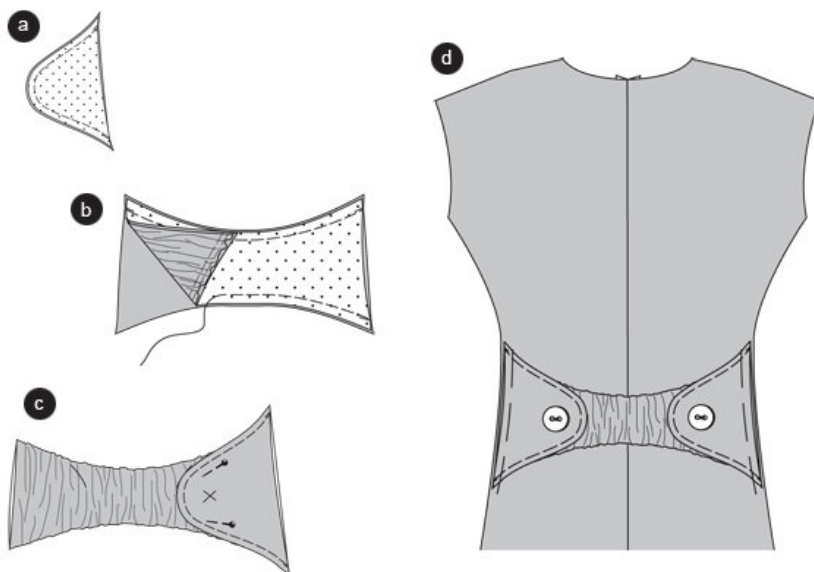
Press the pocket pouches over the seam lines (b).

Position the side front pieces on the center front pieces, right sides facing. Pin the princess seams (seam 2). Stitch. Do NOT stitch the pocket openings between the cross lines, but keep them pinned. Secure seam ends ©.

Position the pocket pouches together and stitch. Neaten allowances and the pocket pouch. Press into the mid front pieces. With hand stitching, secure the curve of the pocket flaps to the outside of the coat (d).

---

## Step 8



### CENTER BACK SEAM

Position the center back pieces together, right sides facing. Stitch the center seam. Press allowances apart.

### BAR

Position the side bars together, one with interfacing, one without. Stitch the edges according to the image. Trim allowances. Turn the bar right sides out. Pin the edges, press and topstitch  $\hat{A}^{1/4}$  (0.7 cm) wide. Gather the length of the chiffon bar along the upper and bottom edge to the length of the center bar. The gathered width has to be distributed equally (a).

Position the chiffon bar on the fabric bar without interfacing, right sides facing. Stitch the long edges together. Trim allowances. Turn the bar inside out. Neaten the open edges (b).

Pin the side bar on the center bar that meets the marked line. Pin the bar. Apply the **BUTTONS**, catching the center bar ©. On the backside sew the center bar by hand. Meeting the marked line, pin the bar on the center back piece (d).

Stitch the **SHOULDER DARTS** of the center back piece to a point. Press the darts inside the center back.

### BACK PRINCESS SEAMS

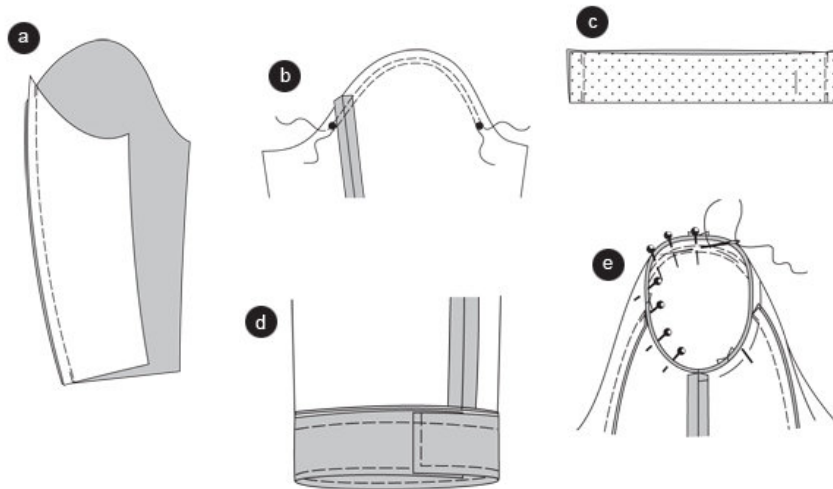
Position the side back pieces on the center back pieces, right sides facing. Pin the princess seams (seam 3) and stitch. Press the allowances inside the back pieces.

### SHOULDER SEAMS / SIDE SEAMS

Position the front pieces on the back pieces, right sides facing. Pin the shoulder seams (seam 4), pin the side seams (seam 10). Stitch the seams. Neaten allowances and press apart.

---

## Step 9



### SLEEVES WITH CUFFS

Position the undersleeve on the upper sleeve, right sides facing. Pin the back seam (seam 11) and stitch. Press allowances apart (a).

Double stitch the sleeve curve from \* to \* narrowly using basting stitches. Fold the sleeves lengthwise, stitch the front sleeve seams (seam 12). Press allowances apart (b).

### CUFFS

Fold the CUFFS along the fold line, right sides facing. Stitch the short edges. Trim allowances. Turn cuffs. Pin the edges, press and topstitch  $\hat{A}^{1/4}$  (0.7 cm) wide. Work **BUTTONHOLE** into the cuffs. Meeting the marked line, position the edges together: one with buttonhole, the other without ©.

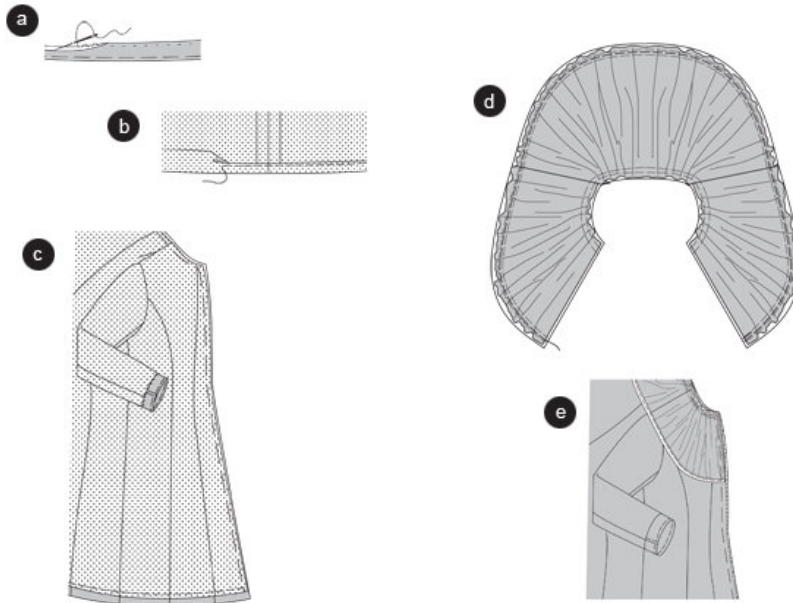
Pin the cuffs onto the bottom sleeve edge, right sides facing (seam 13), then stitch. Press allowances inside the sleeve (d).

**APPLY SLEEVE** Tighten the bobbin threads along the sleeve curve slightly in a way that does not create pleats or puckers.

Position the sleeves onto the armhole, right sides facing. When applying, 4 points are important for the right  $\hat{a}$  " fit  $\hat{a}$  " : the cross lines (14) on the upper sleeve and front piece have to meet. The cross line of the undersleeve has to meet the side seam. The cross line of the sleeve curve has to meet the shoulder seam. The gathered width between \* and \* has to be distributed without creating pleats or puckers. Pin the sleeve on the sleeve side, then stitch. Press allowances inside the sleeve (e).

---

## Step 10



#### HEMLINE

Neaten the hemline, fold and press. Sew the hemline by hand (a).

**LINING** Stitch the lining as the coat was done, the lining seams mirror the coat seams.

Fold and press the lining hemline  $\hat{A}\hat{2}\hat{a}^{\circ}$  (1.5 cm), fold again, pin and topstitch narrowly (b).

Pin the lining onto the coat, wrong sides facing. Pin the neckline edges and front edges together. Pin the sleeve lining onto the cuff seam line, sew by hand ©.

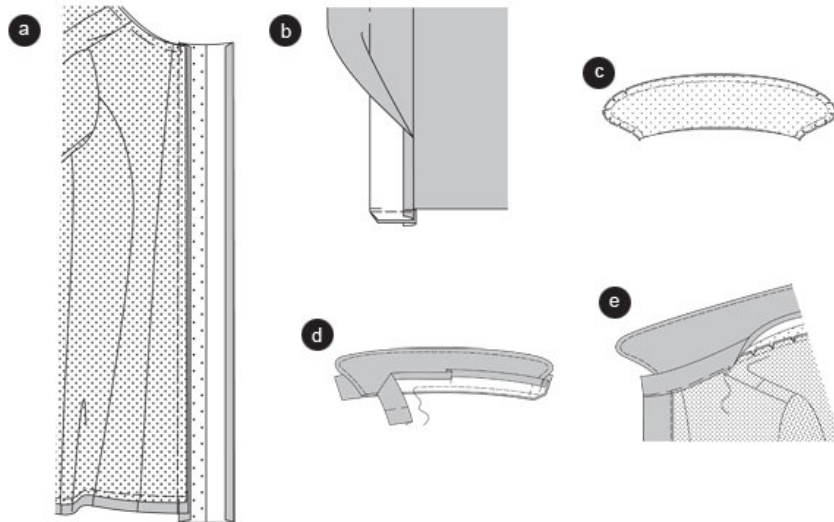
#### YOKE

Position the front yoke pieces on the back yoke pieces, right sides facing. Stitch the shoulder seams of the coat (seam 5) and the chiffon piece (seam 6). Trim allowances of the coat and press apart. Trim allowances of the chiffon piece, neaten together and press inside the back yoke. Gather the chiffon yoke equally to the length of the fabric yoke.

Pin the chiffon yoke onto the fabric yoke, wrong sides facing. The shoulder seams meet. Pin the edges together and stitch. Enclose the yoke edge with satin bias strips (d).

Position the yoke on the coat. The shoulder seams meet. Pin the neckline edges and front edges together (seam 7). Try the coat on, apply and pin the **SHOULDER PADS**, then sew onto the allowances of the shoulder seam (e).

## Step 11



### FRONT PLACKET

Pin the interfaced halves of the placket on the front pieces (seam 7), right sides facing; stitch. Trim allowances and press inside the plackets. Press the long placket edges towards the inside (a). Fold the plackets along the fold line to the outside, pin. Pin the bottom edges together (b). Fold the placket back to the inside, pin. Topstitch the placket narrowly, sandwiching the inner placket edge.

### COLLAR WITH STAND

Position the collar pieces together, pin the edges together and stitch. Trim allowances, snip in, turn the collar. Pin the edges, press and topstitch  $\hat{A}\frac{1}{4}$ “ (0.7 cm) wide. Pin the open edges together ©.

At the non-interfaced collar stand piece, turn the allowance of the seam line edge and press. Pin this stand piece on the interfaced collar side, pin the interfaced stand piece on the other collar side. Pin the stand pieces together (seam 8) and stitch, sandwiching the collar. Trim allowances, cut the corners at an angle. Turn the stand. Pin edges and press (d).

Pin the interfaced stand piece on the neckline (seam 9). Stitch. Trim allowances, snip in and press inside the stand. Pin the non-interfaced stand piece onto the seam line. Topstitch all stand edges narrowly onto the right fabric side of the coat. Topstitch the front placket edges narrowly. Work **BUTTONHOLES** into the right placket and the collar stand. Apply **BUTTONS** onto the left placket, the collar stand and the cuffs (e).

---

**BurdaStyle**

Nancy