

12/2011 Plus Size Flared Trousers

By: burda style magazine

<http://www.burdastyle.com/projects/122011-plus-size-flared-trouse>



Trousers burda style magazine patterns FAQ

Materials

CrÃpe

Step 1 — Preparation



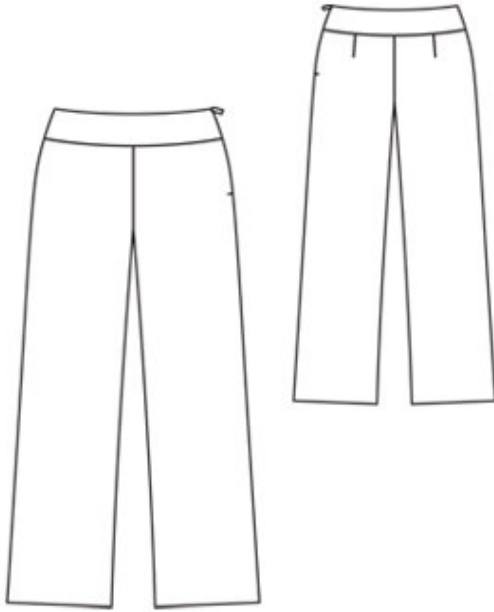
Paper cut for ANSI A (German DIN A4) prints:

This pattern is printed on 8.5 × 11 sheets of plain paper. Do not scale or center pages before printing. Wait until all sheets are printed out before beginning to tape them together. **Do not cut out pattern pieces yet**— Arrange the sheets on a large, hard, flat surface so that they fit together, matching up like numbers and letters (i.e. 6A to 6A). To tape pattern together, fold under the margin of one piece (6A) and tape right against the line of it's matching number/letter (6A).

burda style magazine pattern do not have seam allowance included.

Seam and hem allowances to be added: Seams and edges 1.5 cm (5/8 in).

Step 2 — Cutting out



21â—front trouser piece 2x
22â—back trouser piece 2x
23â—front waistband, on a fold 2x
24â—back waistband, on a fold 2x
Interfacing: See pattern layout.

Step 3 — Back darts

Stitch back darts. Press darts toward centre back.

Step 4 — Leg seams

Stitch right side seam and inside leg seams. Press seam allowances open. Stitch centre front and back seam as continuous seam. Press seam allowances open, from upper edges to beginnings of curve. Do not press seam allowances flat along curve.

Step 5 — Right side seams

Stitch right side seams on waistband pieces. Stitch one waistband unit to upper edge of trousers. Press seam allowances of joining seam onto waistband.

Step 6 — Zip

Sew invisible zip to opening edges of left trouser pieces. Stitch left side seam from lower edge to zip.

Step 7 — Waistband

Lay inside waistband unit right sides together with attached waistband piece. Pin upper edges together. At zip opening, turn ends of inside waistband back, 5 mm (3/16 in) before edge, and pin to upper edge. On outer waistband, turn allowances on opening edges to outside and pin to upper edge, over inside waistband. Stitch along upper edge. Turn allowances on opening edges to inside. Turn inside waistband piece up and stitch to seam allowances, as far as possible, close to seam. Turn inside waistband piece to inside. Baste over joining seam, without turning in, and sew to zip tapes. Work from right side of garment to stitch along line of joining seam, thereby catching inner edge.

Step 8 — Hem

Press hem allowances to inside and sew in place by hand.

BurdaStyle

12/2011 Plus Size Flared Trousers