

Crossover Top 04/2012

By: burda style magazine

<http://www.burdastyle.com/projects/crossover-top-042012>



This is a great little top with one shoulder gathered and the other one pleated. This top has a decorative crossover style and cinches at the waist with a casing and ribbon drawstring. This top would look great paired with some high waisted trousers, or a nice pencil skirt. You could even add sleeves to make a flowy long sleeved blouse.

Step 1 — Preparations



This pattern is printed on 8.5 × 11 sheets of plain paper. Do not scale or center pages before printing. Wait until all sheets are printed out before beginning to tape them together. **Do not cut out pattern pieces yet**— Arrange the sheets on a large, hard, flat surface so that they fit together, matching up like numbers and letters (i.e. 6A to 6A). To tape pattern together, fold under the margin of one piece (6A) and tape right against the line of it's matching number/letter (6A).

Trace the pattern pieces from the pattern sheet following the lines and markings for the correct size and the correct style (111). (This pattern also includes pattern pieces, lines and markings for style 112 that should be ignored.)

The pleat arrows on pieces 21 and 23 are marked for size 36. For the other sizes, mark the pleat arrows accordingly. The band abutting line on pieces 21 and 23 is marked for size 36. For the other sizes, mark the line the same distance from lower edge as for size 36.

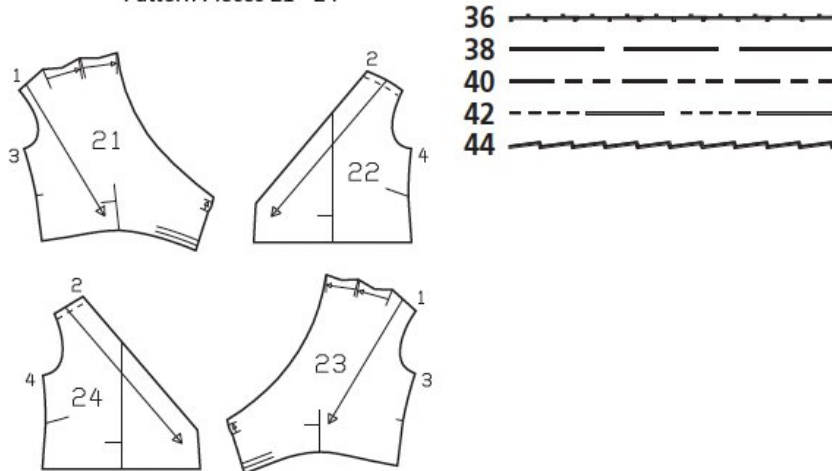
burda style magazine pattern do not have seam allowance included.

Seam and hem allowances to be added:

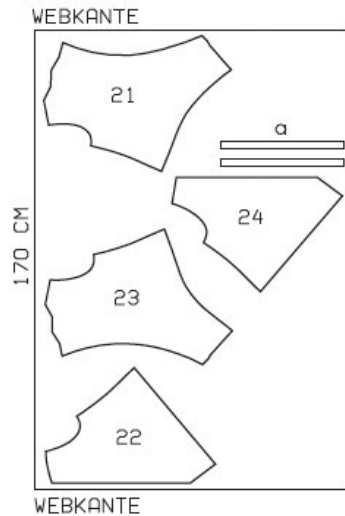
Seams and edges 1.5 cm (5/8 in), no allowance on hem edges.

Step 2 — Cutting Out

Pattern Pieces 21 - 24



Cut on a single layer of fabric as shown in the diagram. Use fabric with a width of 170cm



Webkante = selvage

Cutting out:

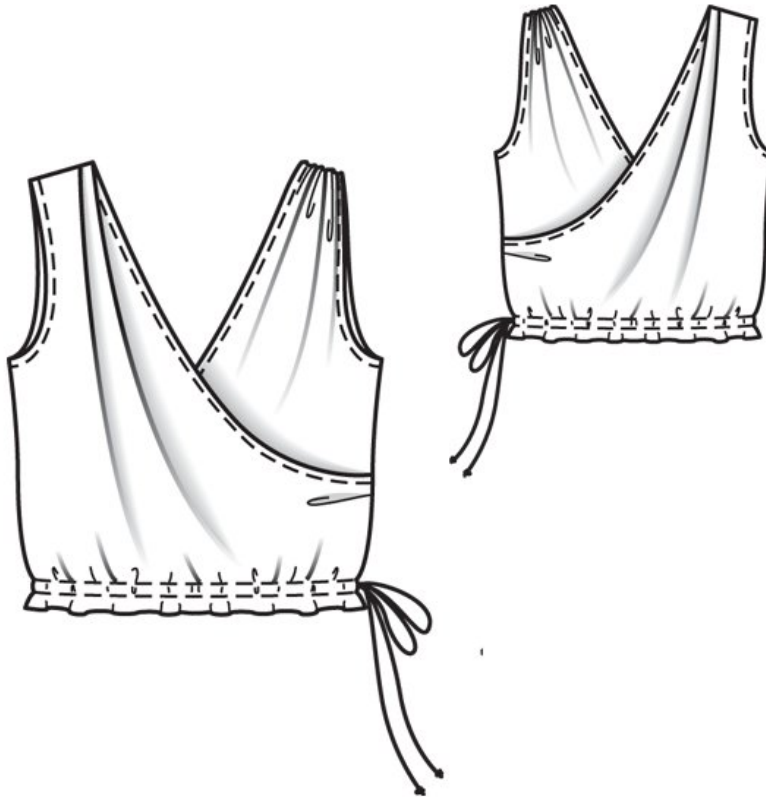
- 21 right front 1x
- 22 left front 1x
- 23 right back 1x
- 24 left back 1x

Draft the following pattern pieces not included in the pattern:

- a) 2 facing strips for armholes,
length: 46 47 49 50 52 cm (18 1/8 18 1/2 19 1/4 19 3/4 20 1/2 ins)
width: 6 cm (23/8 ins) wide including allowances

Vilene Bias Tape/stay tape: Iron to wrong side of armhole edges.

Step 3 — Sewing



Fold pleats in right front and back (shoulder and side edge) in direction of arrows as indicated on pattern and baste so they stay in place.

Gather shoulder edge of left front and back to:
5 5 5.5 5.5 6 cm (2 2 2 1/4 2 1/4 2 3/8 ins) long.

Cut a backing strip, 3 cm (1 1/4 ins) wide, from a scrap of fabric and baste to wrong side of left back shoulder edge. Stitch shoulder seams of bodice right sides together and press seam allowances onto back.

Armholes: Fold facing strips for armholes in half lengthwise, right side facing out, and press. Stitch each folded strip to armhole edge so that fold edge of strip lies on garment piece, 7 mm (1/4 in) wide. Trim seam allowances and turn strips to inside. Topstitch 5 mm (3/16 in) from armhole edges.

Press the seam allowance of the neck edge to inside, and then turn the raw edge under, and stitch down.

Lay right front and right back on corresponding left piece, with wrong side facing right side, with neck edge at abutting line. Baste side and lower edges together.

Stitch side seams, right sides together and press seam allowances open. Sew top ends of seam allowances in place by hand with a slipstitch.

For the drawstring casing, press long edges of bias tape to wrong side, 1.2 cm (1/2 in) wide. Pin casing strip to front and back, at abutting lines, turning ends under at left side seam. Edgestitch long edges in place. Pull cords into casing. Knot ends of cords.

BurdaStyle

Crossover Top 04/2012