

# 4/2010 Girls' dress with ruffle bottom

By: burda style magazine

<http://www.burdastyle.com/projects/42010-girls-dress-with-ruffle-bottom>

---

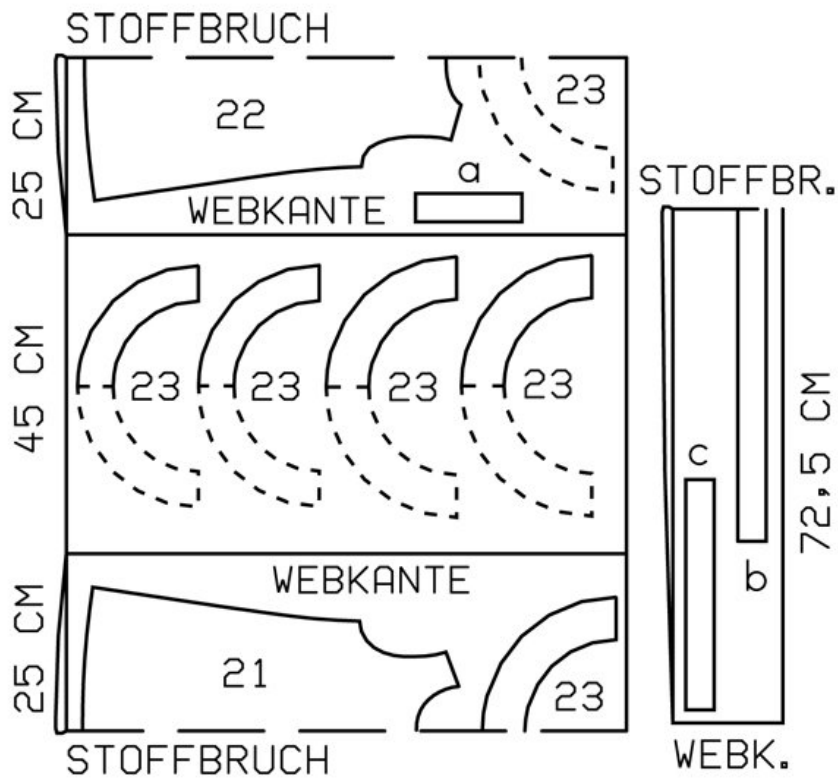
Girls' dress with ruffle bottom burda style magazine patterns FAQ

## Materials

Hoop-striped jersey with two-way stretch

---

## Step 1 — Preparation



133 98-122

Trace the pattern pieces from the pattern sheet. Trace upper and middle flouces from piece 23 each as a separate pattern piece.

Seam and hem allowances:

Seams and edges 1.5 cm (5/8 in).

---

## Step 2 — Cutting Out



21âˆ—front, on a fold 1x

22âˆ—back, on a fold 1x

23âˆ—top flounce, on a fold 2x

âˆ— âˆ— âˆ—middle flounce, on a fold 2x

âˆ— âˆ— âˆ—bottom flounce, on a fold 2x

a) facing for back slit opening, 16 cm (63/8 ins) long, 4 cm (15/8 ins) wide (incl. allowance),

b) binding strip for neck edge and tie bands, 95 cm (37 1/2 ins) long, 4 cm (15/8 ins) wide (incl. allowance),

c) 2 facing strips for armhole edges, 32 âˆ— 33 âˆ— 33 âˆ— 34 âˆ— 35 cm (12 3/4 âˆ— 13 âˆ— 13 âˆ— 13 1/2 âˆ— 13 3/4 ins) long, 4 cm (15/8 ins) wide (incl. allowance).

Interfacing: Iron a strip of inter-facing (G 785), about 3 cm (1 1/4 ins) wide, to wrong side of fabric, over marking for back slit. Iron Vilene Bias Tape -onto neck and armhole edges.

---

## Step 3 — Back slit

Mark slit at centre back with basting thread. Pin facing for back slit right sides together with back, over marking. Work from wrong side to stitch closely around marking. Slash between lines of stitching. Turn facing to inside. Press edges of slit. Topstitch 7 mm (1/4 in) from edges of back slit.

---

## Step 4 — Shoulder seams

Stitch shoulder seams, beginning and ending exactly on marked neck edge. Press seam allowances open.

---

## Step 5 — Binding Strip

Trim away seam allowance on neck edge. Fold binding strip in half lengthwise and press, right side facing out. Unfold strip out flat again. Turn in ends. Now turn each lengthwise edge of strip in to pressed crease and press again. Unfold pressed strip and pin to neck edge, from inside, leaving ends extending evenly as tie bands. Stitch strip in place, 1 cm (3/8 in) from edge, along the crease. Fold strip over edge, turn raw edge in, and baste in place. Stitch edges of tie bands together and edgestitch bias strip in place.

---

## Step 6 — Armholes and side seams

Fold facing strip in half lengthwise and press, right side facing out. Stitch each doubled facing strip to armhole edge so that fold edge of strip lies on garment, 1 cm (3/8 in) past seam line. Trim seam allowances. Turn facing strips to inside and press edges. Stitch side seams, laying facing strip up and stitching ends of strip together. Press seam allowances open. Lay facing strip to inside again. Topstitch edges of armholes.

---

**BurdaStyle**

4/2010 Girls' dress with ruffle bottom