

06/2011 Children's bathrobe

By: burda style magazine

<http://www.burdastyle.com/projects/062011-childrens-bathrobe>



Children's bathrobe burda style magazine patterns FAQ

Materials

Knit terry cloth

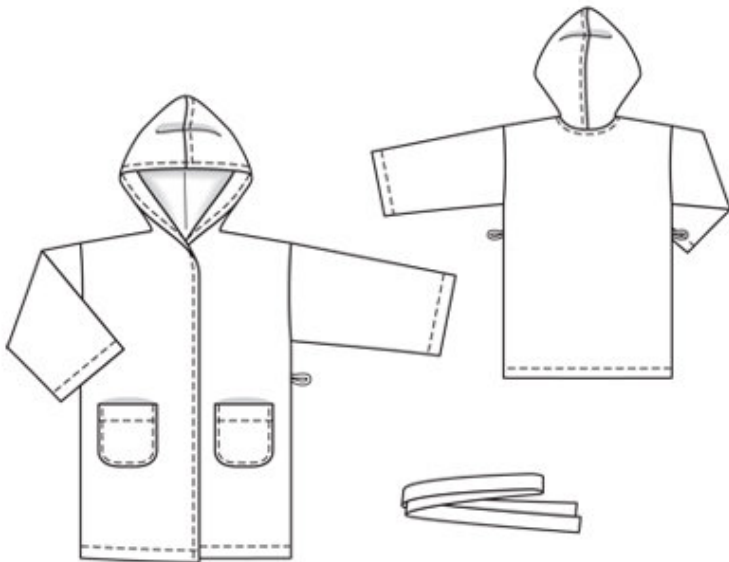
Step 1 — Preparation

Trace the pattern pieces from the pattern sheet. Lengthen piece 21 as indicated.

Seam and hem allowances:

Seams and edges 1.5 cm (5/8 in), hem 4 cm (15/8 ins) (also on lining).

Step 2 — Cutting out



21âˆ’front with hood 2x

âˆ’ âˆ’ âˆ’âˆ’and as lining 2x

22âˆ’back, on a fold 1x

âˆ’ âˆ’ âˆ’âˆ’and as lining, on a fold 1x

23âˆ’sleeve 2x

âˆ’ âˆ’ âˆ’âˆ’and as lining 2x

24âˆ’pocket 2x

a) tie belt, a total of 150 âˆ’ 155 âˆ’ 155 cm (60 âˆ’ 62 âˆ’ 62 ins) long, 6 cm (2 1/2 ins) wide, finished width 3 cm (1 1/4 ins),

b) 2 belt carriers, a total of 22 cm (8 3/4 ins) long, 4 cm (1 5/8 ins) wide (incl. allowances).

Vilene Bias Tape: Iron to wrong side of fabric on front shoulder & seam edges and back neck edge (also

on the lining pieces).

Step 3 — Shoulder seams

Stitch shoulder seams exactly to hood edge/ back neck edge. At corners between front and hood, clip allowance to last stitches. Stitch centre seam of hood. Stitch hood to back neck edge.

Step 4 — Belt carriers

Fold belt carrier strip lengthwise, right side facing in. Stitch 1 cm (3/8 in) from fold edge. Turn right side out. Cut into 2 pieces. Fold belt carriers in half and pin ends together. Pin belt carriers to front pieces, between seam marks on side seam lines.

Step 5 — Sleeves

Stitch sleeves to armhole edges, beginning and ending exactly at marked sleeve seam lines. At ends of seams, turn allowances back and pin. Stitch side seams from sleeve joining to lower edges. Remove pins. Stitch sleeve seams.

Step 6 — Patch pockets

Turn self-facing on upper edge of each pocket to inside and stitch as marked. Press allowances of remaining pocket edges to inside. Stitch pockets to front pieces, at abutting lines, stitching close to edges and again 7 mm (1/4 in) from edges.

Step 7 — Hem Allowance

Turn hem allowance to inside, turn raw edge under, and stitch 3 cm (1 1/4 ins) from lower edge.

Step 8 — Lining

Stitch lining seams. Hem lining.

Step 9 — Lining

Pin lining to robe, right sides facing. Stitch together along front edges and edge of hood. Trim seam allowances. Turn lining to inside and turn hood right side out. Pull sleeve linings into sleeves. Topstitch 2 cm (3/4 in) from front edges and edge of hood. Sew hem edges of robe and lining together by hand, from front edge to stitching.

Step 10 — Sleeves

Turn in lower edges of sleeves and sleeve linings at the seam and hold together with a single straight pin. At hem edge, reach between outer fabric and lining to first pull out one sleeve. Remove the pin but keep hold of the edges. Stitch edges of sleeve and lining together, right sides facing. From the outer side of the robe, now pull the sleeve out again and the sleeve lining will be pulled into the sleeve. Sew other sleeve in same manner. Topstitch 3 cm (1 1/4 ins) from lower edge of each sleeve. Fold up lower edges of sleeves.

Step 11 — Tie belt

Fold tie belt lengthwise, right side facing in. Stitch edges together, leaving a section of seam open for turning. Turn belt right side out. Sew seam opening closed.

BurdaStyle

06/2011 Children's bathrobe