

burda style magazine 02/2010 Fitted Skirt

By: burda style magazine

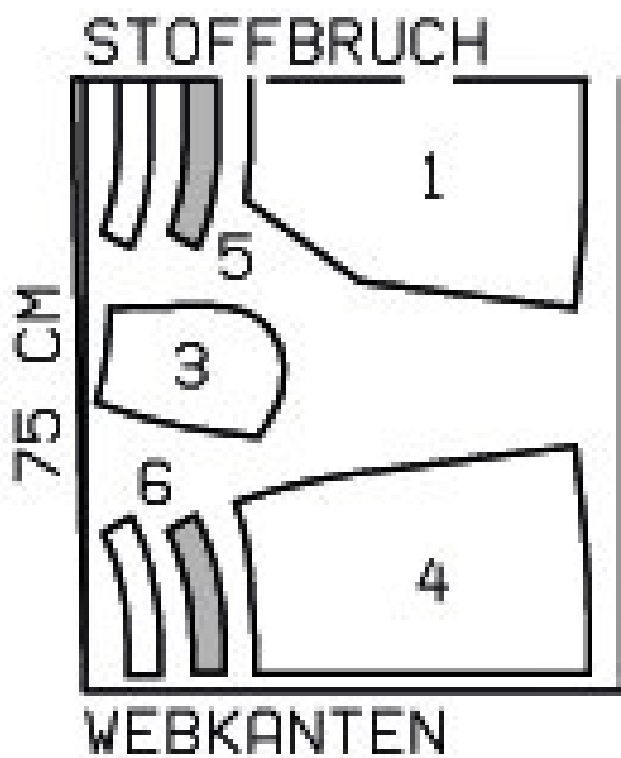
<http://www.burdastyle.com/projects/burda-style-magazine-022010-f>

Fitted Skirt burda style magazine patterns FAQ

Materials

Cotton twill

Step 1 — Preparation



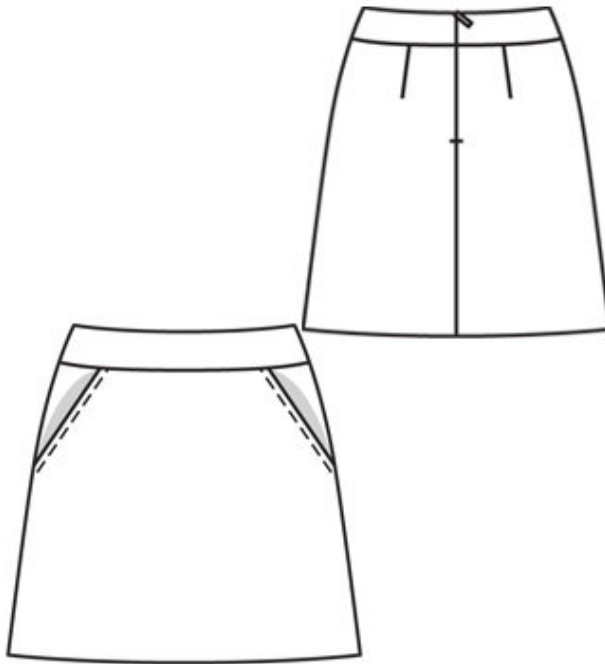
104 A 34-44

Trace the pattern pieces from the pattern sheet. Follow lines and details for view A .

Seam and hem allowances:

Seams and edges 1.5 cm (5/8 in), hem 4 cm (15/8 ins).

Step 2 — Cutting Out



Top fabric:

1â— front skirt panel, on a fold 1x

3â— side hip yoke with

â— â— integrated pocket piece 2x

4â— back skirt panel 2x

5â— front waistband, on a fold 2x

6â— back waistband 4x

Lining piece:

2â— pocket piece 2x

Interfacing: Iron on outer waistband pieces.

Step 3 — Hip Yoke Pockets

Stitch pocket \hat{A} -pieces right sides together with \hat{A} -pocket opening edges of front trouser pieces. Lay pocket pieces up and \hat{A} -stitch to seam allowances close to \hat{A} -seam. Turn pocket pieces to inside. Pin pocket opening edges to hip \hat{A} -yokes at placement lines. Stitch \hat{A} -pocket pieces together on inside. Baste pocket

pieces to wrong side of front trouser pieces. Topstitch pocket opening edges 7 mm (1/4 in) wide.

Step 4 — Darts

Stitch back darts, press to centre.

Step 5 — Side Seams

Stitch side seams. Press seam allowances open.

Step 6 — Waistband

Stitch side seams of waistband pieces. Stitch outer waistband to upper edge of skirt panels. Press seam allowances of joining seam onto waistband.

Step 7 — Zipper

Sew invisible zip to back waistband pieces and skirt panels. Stitch centre back from lower edge to zip.

Step 8 — Finishing Waistband

Lay inside waistband right sides together with stitched waistband. Turn inside waistband pieces back at zip opening, about 5 mm (3/16 in) before edge, pin at upper edge. Lay allowances at opening edges of skirt outward and pin to upper edge over inside waistband pieces. Stitch along upper edge of waistband. Lay inside waistband to inside, pin over joining seam without turning in, sew to zip. Topstitch waistband close to joining seam and upper edge.

Step 9 — Finishing Hem Allowance

Press hem allowance to inside and sew on by hand.

BurdaStyle

burda style magazine 02/2010 Fitted Skirt