

02/2012 Short jacket

By: burda style magazine

<http://www.burdastyle.com/projects/022012-short-jacket>

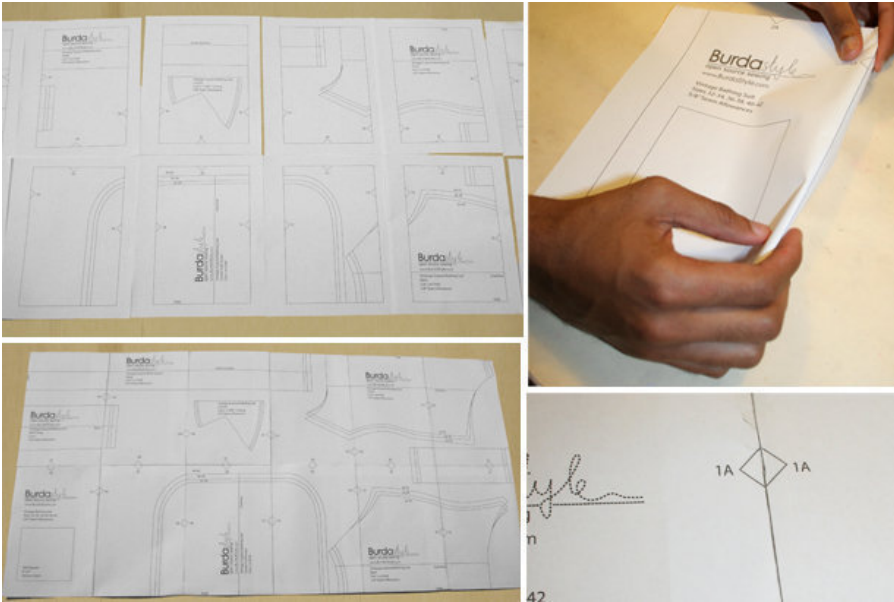


Short jacket burda style magazine patterns FAQ

Materials

Shot taffeta

Step 1 — Preparation



Paper cut for ANSI A (German DIN A4) prints:

This pattern is printed on 8.5 × 11 sheets of plain paper. Do not scale or center pages before printing. Wait until all sheets are printed out before beginning to tape them together. **Do not cut out pattern pieces yet**— Arrange the sheets on a large, hard, flat surface so that they fit together, matching up like numbers and letters (i.e. 6A to 6A). To tape pattern together, fold under the margin of one piece (6A) and tape right against the line of it's matching number/letter (6A).

Trace the pattern pieces from the pattern sheet following the lines and markings for the correct size and the correct style (101). (This pattern also includes pattern pieces, lines and markings for style 102 that should be ignored.)

burda style magazine pattern do not have seam allowance included.

Seam and hem allowances to be added: Seams and edges; 1.5 cm (5/8 in). Hem and sleeve hems; (4 cm 1 5/8 in) lining; 1.5 cm (5/8 in) all around.

Step 2 — Cutting out



Main fabric:

1 front 2x
front facing 2x
2 back, 2x
3 upper sleeve, 2x
4 under sleeve, 2x
5 back facing, on a fold 1x

Lining:

piece 1 minus width of facing,
piece 2 minus width of facing and with an ease pleat of approx. 2 cm (3/4 in) added at center back, pieces 3
and 4.

Interfacing:

Cut interfacing and iron on to wrong side of all facing pieces.

Step 3 — Sewing

Darts and section seams

Stitch bust darts. Press darts down.

Lay the back pieces right sides together, line up, pin and stitch the center back seam. Press the seam allowances open. Lay the back piece right sides together with the front and line up, pin and sew the side seams. Press seam allowances open.

Stitch the shoulder seams. Press seam allowances toward back.

Facing

Stitch seams of facing. Pin facings right sides together with jacket. Stitch along front and neck edges. Trim seam allowances, trim the corners diagonally and clip along the curves several times for better turning. Lay facing over the seam allowances and topstitch on the lining, close to the joining seam, catching the seam allowance in the seam and stitching as far as possible at corners. Turn facing to inside and press the edges.

Sleeves

Lay the upper sleeve piece and the under sleeve pieces, right sides together, line up, pin and stitch sleeve side seams. Press the seam allowances open.

Fold and press the sleeve hem allowances to the inside and sew in place by hand.

Set in sleeves. Turn the garment inside out and set in sleeves in each armhole, right sides facing each other, easing the sleeve caps. Pin the sleeve to the armhole and stitch around the armhole opening. Press the seam allowance out in to the sleeve. Sew shoulder pads in place.

Unfold facings at hem. Press hem allowance to inside. Topstitch 3.5 cm and 7 cm (13/8 and 23/4 ins) from hem edge, beginning and ending at front edge. Turn facing to inside again and sew to hem allowance.

Sew lining

On lining backs, stitch allowances of centre seam together, 1 cm (3/8 in) from edge. For the ease pleat, stitch along centre back at top and bottom, each approx. 5 cm (2 ins) long, and baste in between. Press pleat to one side. Stitch darts and seams of lining. Set in sleeve linings.

Sew lining in jacket

Stitch lining right sides together with inside facing edge, leaving approx. 8 cm (31/4 ins) open at bottom. Lay lining inside jacket, wrong sides facing, pulling linings into sleeves. Pin folds, approx. 1 cm (3/8 in) deep, in lining, above jacket hem and sleeve hems. Turn in lining and sew to hem allowances by hand. Remove pins, lay extra length of lining down, and press. Sew open edges of lining to front.

BurdaStyle

02/2012 Short jacket