

11/2011 Cap sleeve cocktail dress with metallic insets

By: burda style magazine

<http://www.burdastyle.com/projects/112011-cap-sleeve-cocktail-dre>



11/2011 Cap sleeve cocktail dress with metallic insets burda style magazine patterns FAQ

Materials

Wool crÃ¢pe with metallic coating

Step 1 — Preparation



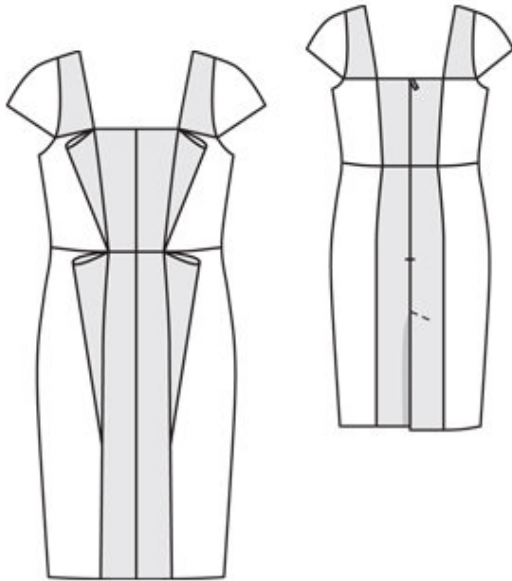
Paper cut for ANSI A (German DIN A4) prints:

This pattern is printed on 8.5 × 11 sheets of plain paper. Do not scale or center pages before printing. Wait until all sheets are printed out before beginning to tape them together. **Do not cut out pattern pieces yet**— Arrange the sheets on a large, hard, flat surface so that they fit together, matching up like numbers and letters (i.e. 6A to 6A). To tape pattern together, fold under the margin of one piece (6A) and tape right against the line of it's matching number/letter (6A).

burda style magazine pattern do not have seam allowance included.

Seam and hem allowances to be added: Seams and edges 1.5 cm (5/8 in).

Step 2 — Cutting out



Wool crÃ¢pe:

- â—'1â—'centre front 2x
- â—'2â—'lower side front 2x
- â—'3â—'upper side front 2x
- â—'4â—'centre back 2x
- â—'5â—'lower side back 2x
- â—'5â—'upper side back 2x
- â—'6â—'centre front skirt panel 2x
- â—'7â—'side front skirt panel 2x
- â—'8â—'centre back skirt panel 2x
- â—'9â—'side back skirt panel 2x
- 10â—'sleeve front 2x
- 11â—'sleeve back 2x
- 12â—'lower decorative band 2x
- 13â—'upper decorative band 2x

Use the shiny side of the fabric as the right side for the centre piece, the upper pieces, and the decorative bands. Use the matte side as the right side of the fabric for all other pieces.

Lining: pieces 1 and 6, each on a fold at centre front; pieces 2 and 3, placed toÃ—gether; piece 8 without vent Ã—facing; and pieces 4, 5, 7, 9, 10, and 11.

Interfacing: See pattern layout. Iron Vilene Bias Tape/stay tape to wrong side of neck and armhole edges.

Step 3 — Front and back

Stitch upper side front and back pieces to corresponding lower pieces, beginning and ending exactly at the marked neck and armhole edges. Press seam allowances open.

Step 4 — Skirt

On the centre front pieces and the centre front skirt panels, stitch the centre seams.

Step 5 — Decorative band piece

On each decorative band piece, press the self-facing to inside. Fold the bands on the fold line, wrong side facing in. Pin long edges together. Do not press fold edge. Baste the upper decorative bands to the section seam edges of the centre front and baste the lower decorative bands to the centre front skirt panel, from the marked waist seam.

Step 6 — Skirt

Stitch the lower side fronts to the centre front, beginning exactly at the horizontal seam, catching the decorative bands. Stitch the side front skirt panels to the centre front skirt panel, catching the decorative bands. Turn bands toward side pieces. Press the seam allowances open.

Step 7 — Back pieces

Stitch the lower side back pieces to the centre back pieces, beginning exactly at horizontal seam. Stitch the side back skirt panels to the centre back skirt panels. Press the seam allowances open.

Step 8 — Skirt

Stitch the skirt front to the bodice front and stitch the skirt backs to the bodice backs. Press the seam allowances up.

Step 9 — Zip

Sew the invisible zip to the back opening edges. Stitch the back centre seam from the vent to the zip. Press the seam allowances open and press the right vent facing to the inside. Turn the left vent underlap toward the right back. To avoid needing to clip the allowance, press the allowance of the left back under, above the vent, tapering as you go. Trim the right vent facing to a width of 6 cm (23/8 ins). Press the facing of the vent underlap to inside. At top of vent, topstitch the right back diagonally as marked, catching the underlap.

Step 10 — Sleeves

Stitch sleeve fronts to bodice front and stitch sleeve backs to bodice backs, beginning and ending exactly at horizontal seams. Do not catch seam allowances of horizontal seams and leave seam allowances on lower edges of sleeves loose. Press seam allowances open. Stitch the shoulder seams and upper sleeve seams. Stitch the side seams.

Step 11 — Lining

Stitch seams of lining. Pin lining right sides together with neck edge of dress. At zip opening, turn lining back, approx. 5 mm (3/16 in) before edge of opening, and pin to neck edge. Turn allowances on slit edges of dress to outside and pin to neck edge, over lining. —Stitch along neck edge, interrupting stitching at corners of neck edge and not catching seam allowances of —section seams. Clip seam allowance of lining into corners. Turn allowances on opening edges to inside. Turn lining up and stitch to seam allowances, as far as possible, close to seam. Turn lining to inside but do not yet sew to zip tapes.

Step 12 — Lining

At one top sleeve seam, turn lower edges of sleeves and —lining under, toward one another, and pin together with a single straight pin. —In back, reach between main fabric and lining and pull lower edge of sleeve to outside. Stitch edges together, right sides facing. Trim the seam allowances. Push the sleeve in place again. Repeat for second sleeve. At one side seam, turn armhole edges (main fabric and lining) under and pin together. Pull to outside and —stitch together. Trim the seam —allow—ances. Push armhole edge in place again. Repeat with second armhole. Press edges. Turn —lining edges under and sew to zip tapes.

Step 13 — Hem

At hem edge, unfold vent facings. Press hem allowance to inside and sew in place by hand. Turn facings to inside and sew to hem allowance.

Step 14 — Vent

Hem lining so that it is approx. 2 cm (3/4 in) shorter than the dress. At back vent, turn lining edge under and pin to vent facing of left back. Trim opposite edge of lining to 1 cm (3/8 in) before pressed edge of underlap. Clip 1 cm (3/8 in) —diagonally into top corner. Turn edge of lining under and pin to vent facing of right back. At top of vent, pin lining to underlap. Sew lining in place at back vent.

Step 15 — Decorative band

Sew upper edges of decorative bands to dress, with a few —stitches by hand.

BurdaStyle

11/2011 Cap sleeve cocktail dress with metallic insets