

Collar Necklace DIY

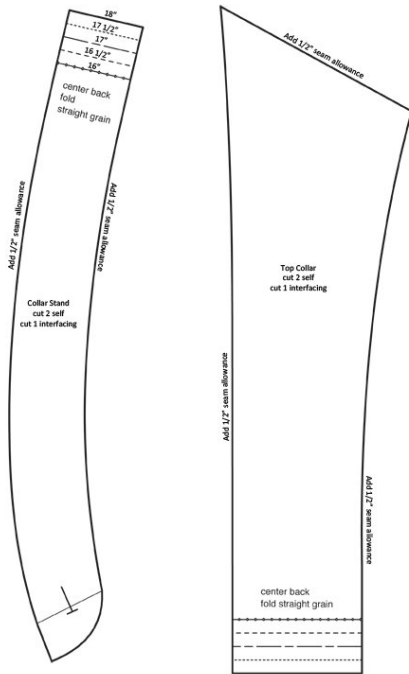
By: burdastyle

<http://www.burdastyle.com/techniques/collar-necklace-diy>



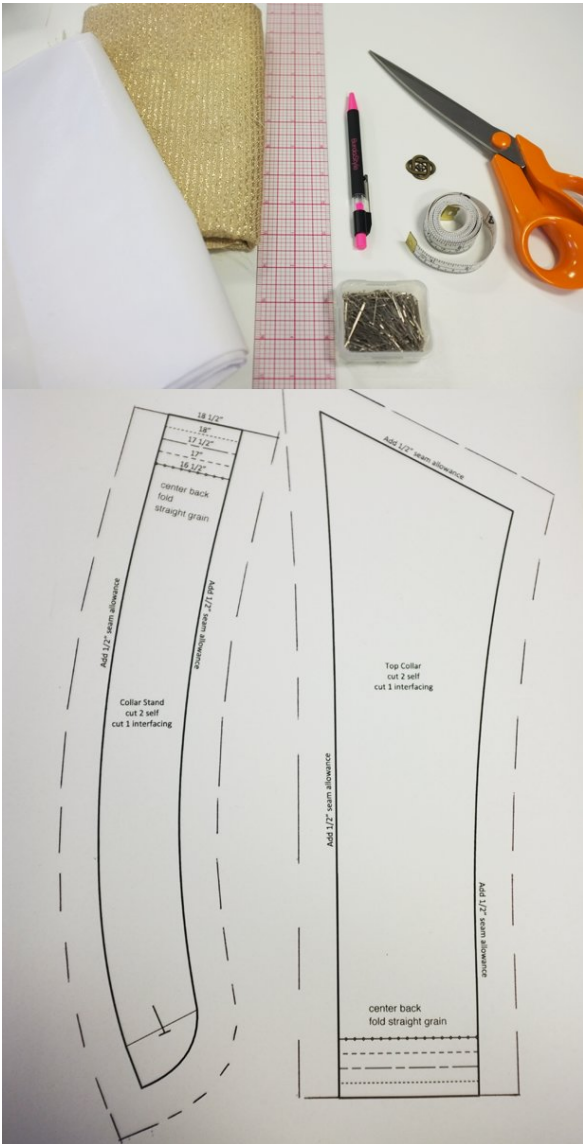
Learn how to make a cute and quirky collar necklace. This is a growing trend, and adds a great detail to any outfit! Follow step-by-step instructions here.

Step 1 — Print Out Pattern



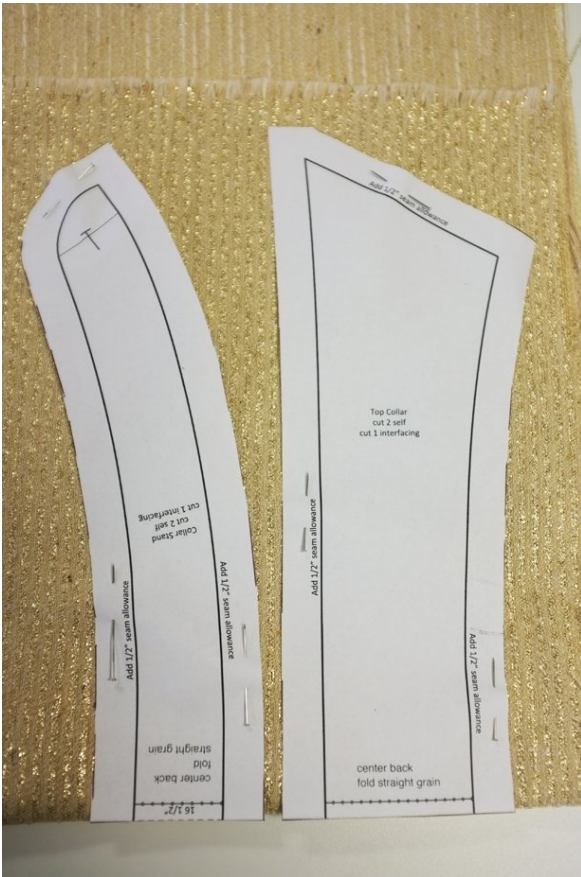
First you need to print out your collar pattern. Simply save the image above to your desktop (right click image and save as...). Open the pattern file and print, make sure not to do any scaling or fitting of the image. Now you need to measure your neck circumference (you may need someone to help you with this). Add 3" to your neck circumference. Use this measurement to determine what collar size you want to make. Collar measurements are indicated on the pattern size lines. For example, neck circumference is 13" + 3" is 16", so the smallest collar size would fit the best. You may even want to just cut out the collar stand in muslin and place it around your neck to determine size.

Step 2 — Supplies and Seam Allowance



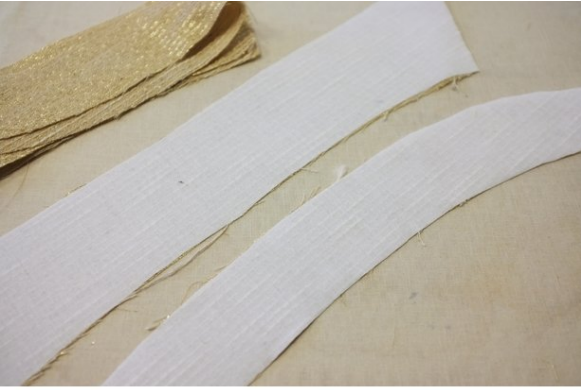
The supplies you will need for this project is: - fashion fabric - button - measuring tape - interfacing - scissors - pins - pen - ruler - iron - thread - sewing machine. Once you have determined your collar size, you need to add seam allowance to the pattern. Use your ruler to add 1/2" to edges of the collar. You do not need to add seam allowance to the center back seam because it is cut on a fold. Extend the center back line on each side according to your collar size to meet the seam allowance lines.

Step 3 — Cutting Out



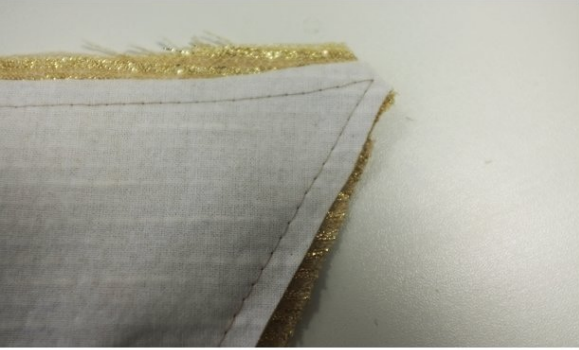
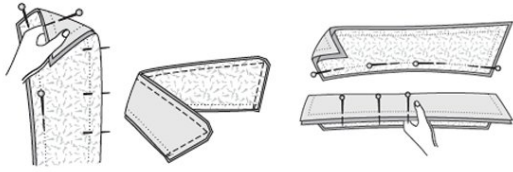
Cut out the pattern pieces on the seam allowance lines and place on fabric. Align the fabric fold with the center back of the pattern pieces. You will need to cut these pattern pieces out **TWICE** from fashion fabric and **ONCE** out of interfacing. So you have two top collars (fashion fabric), two collar stands (fashion fabric), one top collar (interfacing), one collar stand (interfacing).

Step 4 — Interfacing



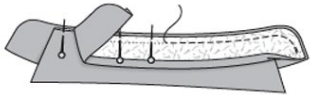
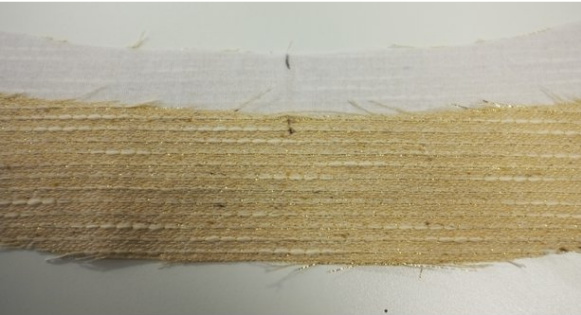
Fuse interfacing to WRONG side of fashion fabric on ONE of the top collars and collar stands. Make sure to apply pressure to the iron so the interfacing securely stay on the fabric.

Step 5 — Top Collar



Place the two top collar pieces right sides together and stitch together along outer edges leaving the bottom edge open. Trim the seam allowance of the interfaced top collar (to reduce bulk) and clip the corners. Press the seam allowance away from the seam on each side (this makes the collar have a crisper looking edge).

Step 6 — Attaching Top Collar and Collar Stand



Turn the top collar to the right side and press. Use your scissors or a pointer to press into the points of the collar. Top stitch around the top collar approximately 1/8" from edge, pivoting at the corners. Mark the center backs of the top collar and both collar stand pieces. Lay the interfaced collar stand right side and place the top collar on top of it, matching center back points. Make sure that the interfaced side of the top collar is face down. Now place the other collar stand piece on top of the top collar (the top collar is now sandwiched between the two collar stand pieces). Stitch around the outer edges of the collar stand making sure to stitch through the top collar as well.

Step 7 — Clipping



Once the collar stand is stitched together, trim the seam allowances and clip around the curve of the collar stand. Flip the collar right side out and press.

Step 8 — Finishing and Buttonhole



On the bottom edge of the collar stand press seam allowances up to the wrong sides of the collar stand (inside the collar). Pin lower edge of collar stand so that the folded bottom edges match. Stitch along lower edge of collar stand, sewing the folded edges together. Continue top stitching around the collar stand. Mark the buttonhole edge as marked on the pattern. Follow your specific sewing machine directions on how to sew a buttonhole.

Step 9 — Button



Cut the buttonhole opening and sew the button on the opposite side of the collar stand. Now you are ready to wear your new collar necklace with any outfit!

BurdaStyle

Collar Necklace DIY