

# 4/2010 Trench Coat

By: burda style magazine

<http://www.burdastyle.com/projects/42010-trench-coat>

---

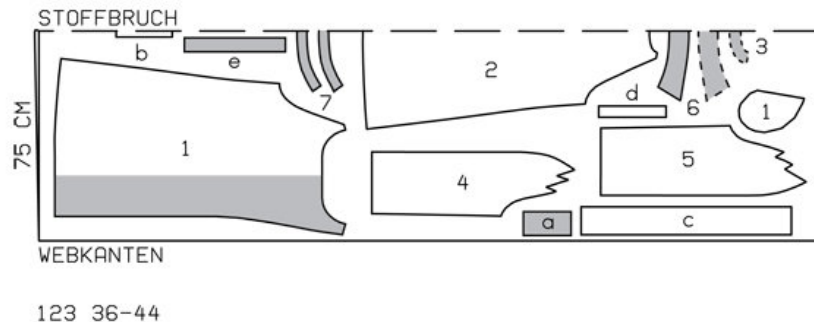
Trench Coat burda style magazine patterns FAQ

## Materials

Canvas with crosswise stretch

---

## Step 1 — Preparation



Trace the pattern pieces from the pattern sheet. Trace the pocket -piece from piece 1 as a separate pattern piece.

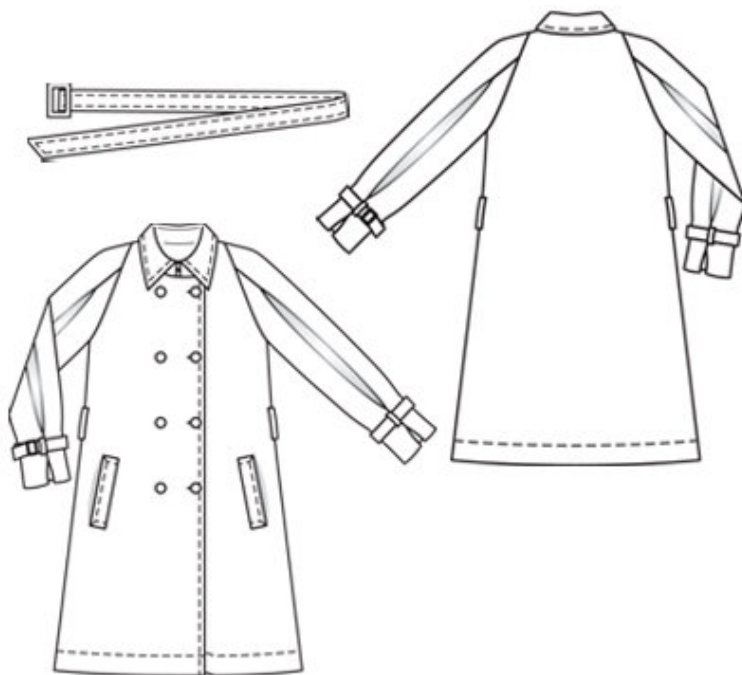
The buttonholes and button markings on piece 1 are for size 36. For sizes 38 — 44, mark the top buttonhole the -same distance from neck edge as for size 36. The bottom buttonhole is in the same place for all sizes. Space the other buttonholes evenly in between. Remark the buttons accordingly.

Seam and hem allowances:

Seams and edges 1.5 cm (5/8 in), hem and sleeve hems 5 cm (2 ins).

---

## Step 2 — Cutting Out



Canvas:

1â— front 2x

â— â— pocket piece 2x

2â— back, on a fold 1x

3â— back facing, on a fold 1x

4â— front sleeve 2x

5â— back sleeve 2x

6â— collar, on a fold 2x

7â— collar band, on a fold 2x

a) 2 welts, 17 cm (63/4 ins) long, 8.5 cm (a generous 31/4 ins) wide, finished width 4.2 cm (approx. 15/8 ins),

b) 2 belt carriers, a total of 20 cm (8 ins) long, 4 cm (15/8 ins) wide (incl. allowance),

c) belt, a total of 146 â— 150 â— 154 â— 158 â— 162 cm (571/2 â— 59 â— 603/4 â— 621/4 â— 633/4 ins) long, 10 cm (4 ins) wide, finished width 5 cm (2 ins),

d) 4 sleeve loops, a total of 24 cm (91/2 ins) long, 4 cm (15/8 ins) wide (incl. allowance),

e) 2 sleeve tabs, 35 â— 36 â— 37 â— 38 â—

39 cm (133/4 â— 141/4 â— 141/2 â— 15 â— 151/2 ins) long, 5 cm (2 ins) wide, finished width 2.5 cm (1 in).

Lining: pocket piece (piece 1).

Interfacing: See pattern layout. Also interface hem allowances. Iron strips of interfacing, about 6 cm (21/2 ins) wide, to wrong side of fabric, over marked welt joining lines. Iron Vilene Bias Tape onto edges of armholes.

### **Step 3 — Construct welt pockets on fronts**

Fold welts lengthwise, right side facing in. Stitch across ends. Turn welts right side out. Stitch welts right sides together with marked joining lines on fronts. Lay one pocket piece on each front, opposite welt, and stitch 1.5 cm (5/8 in) from welt joining seam. This seam should be about 5 mm (3/16 in) shorter at the ends than the welt joining seam. Slash between lines of stitching and clip diagonally toward ends of seams. Do not cut into pocket -pieces. Pull pocket pieces to inside and press welts over pocket openings. Work from inside to stitch remaining pocket pieces to seam allowances of welt joining seams. Lay small triangles at pocket opening ends to inside and sew in place on pocket pieces. Trim pocket pieces even and stitch together. Edgestitch narrow edges of welts in place and stitch again 7 mm (1/4 in) from narrow welt edges. Topstitch welt close to edges and 1 cm (3/8 in) from edges. Stitch pocket lining pieces to seam allowances of welt joining seams. Finally, stitch ends of welts in place, along lines of previous stitching.

---

### **Step 4 — Stitch side seams.**

Stitch side seams.

---

### **Step 5 — Sleeve pleats**

Stitch underneath sleeve seams. Press sleeve hem allowances to inside and pin. Fold inverted pleats in each sleeve, at centre pleat line, right fabric side facing in. Stitch outer pleat lines together — to pleat mark for upper pleats and between arrows for lower pleats. Fold pleats in arrow direction and press, do not press pleat folds between seams. Baste upper pleats in place.

---

### **Step 6 — Stitching sleeves to armhole edges**

Stitch sleeves to armholes edges. Press seam allowances onto fronts and back, from upper edges to beginning of underarm curve. Stitch shoulder seams and top sleeve seams as continuous seams, laying hem allowance down again to do so. Lay sleeve hem allowances to inside and sew in place by hand.

---

### **Step 7 — Facings**

Press hem allowance on lower edge of coat to inside and stitch 4 cm (15/8 ins) from edge. Lay self-facings on both fronts outward and stitch to back facing. Stitch facings to neck edge, from front edge (fold) to centre front. Leave facings lying right sides together with coat for now.

---

### **Step 8 — Collar**

Stitch collar pieces together along outer edge, right sides facing. Trim seam allowances. Turn collar right side out and press. Topstitch edges of collar. Lay collar band pieces right sides together, catching collar in between. Stitch along front and upper edges of collar band, beginning and ending at front edges, exactly on marked joining seam, and leaving two openings at each centre front, each approx. 5 mm (3/16 in) long, for hooks and eyes. Turn collar band right side out. Work from inside to slip hooks through openings in right edge of collar band and eyes through openings in left edge of collar band, to outside. Sew ends of hooks and eyes to inside of collar band. Lay collar between coat and facing. Stitch outer collar band piece to neck edge of coat and stitch inside collar band piece to facing. Press seam allowances open. Turn facing to inside. Pin collar joining seams together. Lay -facing in back up again and stitch seam allowances together close to collar joining seam.

---

## Step 9 — Belt carriers

Fold strip for belt carriers lengthwise, right side facing in. Stitch 1 cm (3/8 in) from fold edge. Turn right side out. Topstitch close to edges. Cut two pieces, each 10 cm (4 ins) long, for the belt carriers and four pieces, each 6 cm (23/8 ins) long for the sleeve loops. Pin belt carriers over side seams as marked, turning ends in. Edgestitch ends of belt carriers in place. Turn in ends of sleeve loops for a finished length of 3.5 cm (1 1/2 ins). Pin sleeve loops to sleeves, at front and back pleats, 4 cm (15/8 ins) above hem edge. Edgestitch end of sleeve loops in place.

---

## Step 10 — Belt

Fold belt lengthwise, right side facing in. Trim one end at an angle. Stitch lengthwise edge and slanted end closed. Turn right side out and topstitch close to edges. Fold straight end of belt over bar of buckle, turn in, and sew in place.

---

## Step 11 — Sleeve Tabs

Construct sleeve tabs as for belt. Topstitch close to edges.

---

**BurdaStyle**

4/2010 Trench Coat