

# 4/2010 Boys' shirt

By: burda style magazine

<http://www.burdastyle.com/projects/42010-boys-shirt>

---

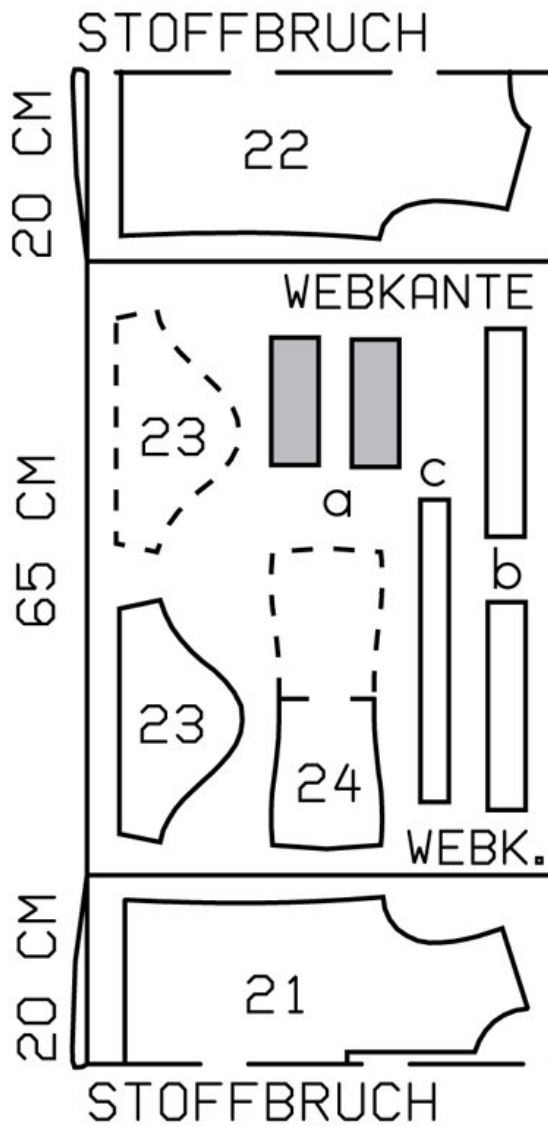
Boys' shirt burda style magazine patterns FAQ

## Materials

Hoop-striped jersey

---

## Step 1 — Preparation



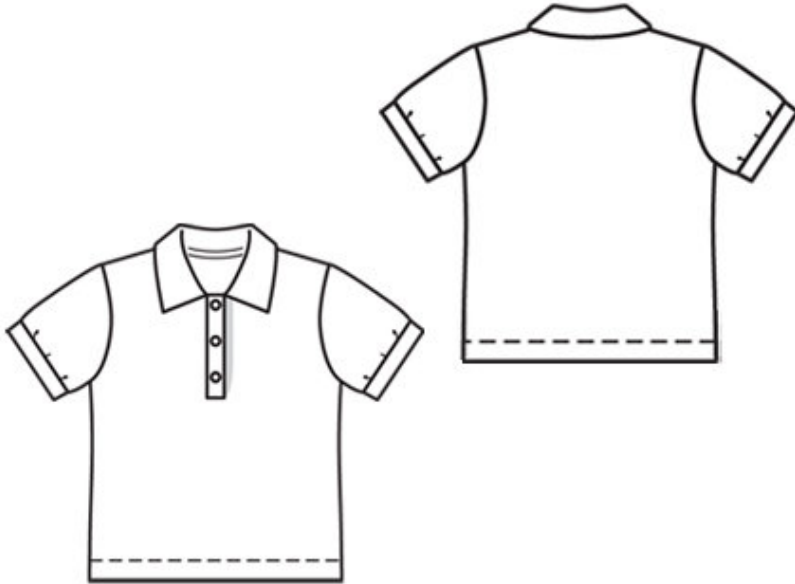
130 A, B 104-122

Trace the pattern pieces from the pattern sheet. Note different hem lines for views A and B.

Seam and hem allowances:

Seams and edges 1.5 cm (5/8 in), front bands and band joining edges 1 cm (3/8 in), hem 3 cm (1 1/4 ins).

## Step 2 — Cutting Out



21âˆ¬front, on a fold 1x

22âˆ¬back, on a fold 1x

23âˆ¬sleeve 2x

24âˆ¬collar, on a fold 1x

a) 2 front fastening bands, 11.5 âˆ¬ 12 âˆ¬ 12.5 âˆ¬ 13 âˆ¬ 13.5 cm (4 1/2 âˆ¬ 4 3/4 âˆ¬ 5 âˆ¬ 5 1/4 âˆ¬ 5 3/8 ins) long, 5 cm (2 ins) wide, finished width 2.5 cm (1 in),

b) 2 sleeve bands, 20 âˆ¬ 20.5 âˆ¬ 21 âˆ¬ 21.5 âˆ¬ 22 cm (8 âˆ¬ 8 1/4 âˆ¬ 8 3/8 âˆ¬ 8 1/2 âˆ¬ 8 3/4 ins) long, 4 cm (1 1/2 ins) wide, finished width 2 cm (3/4 in),

c) facing strip for neck edge, 30 âˆ¬ 30 âˆ¬ 31 âˆ¬ 31 âˆ¬ 32 cm (12 âˆ¬ 12 âˆ¬ 12 1/4 âˆ¬ 12 1/4 âˆ¬ 12 3/4 ins) long, 3 cm (1 1/4 ins) wide (incl. allowance).

Interfacing: See pattern layout. Also iron interfacing to wrong side of front over, bottom corners of placket fastening.

---

## Step 3 — Shoulder seams

Stitch shoulder seams. Neaten seam allowances together and press onto back.

---

## Step 4 — Placket fastening and collar

Stitch front bands to vertical edges of front. Clip diagonally into seam allowances of front at bottom corners. Press seam allowances of band joining seams and of other long edges of bands onto bands. Mark centre front on bands, 1.2 cm (1/2 in) from joining seam. Fold collar on fold line, right side facing in, and stitch across ends. Turn collar right side out and press. Baste edges of collar together to neck edge, from centre front. Fold bands half to outside and pin top ends in place. Pin facing strip to neck edge, over collar ends lie on bands. Stitch along top edges of bands and along neck edge. Trim seam allowances to 5 mm (3/16 in) wide. Turn bands right side out. Lay facing strip to inside and lay collar up. Turn in facing strip to a width of about 8 mm (1/4 in) and baste in place. Baste inside edges of band to joining seams. Topstitch bands close to joining seams. Topstitch 7 mm (1/4 in) from neck edge, beginning and ending at band joining seams. For the girl's shirt, pin right band to left band, matching centres. For the boy's shirt, pin left band to right band. Baste bottom edges of bands together and stitch to front. Press seam allowances down.

---

## Step 5 — Side seams and hem

Stitch side seams. Press hem allowance to inside. Stitch hem from right side, 2.5 cm (1 in) from edge, with the twin needle.

---

## Step 6 — Sleeve seams and bands

Stitch sleeve seams. Stitch ends of sleeve bands together. Fold sleeve bands in half and stitch to lower edges of sleeves, stretched to fit. Press seam allowances up.

---

## Step 7 — Set in sleeves

Set in sleeves.

---

## Step 8 — Snaps

Attach 2 snap for boy's shirt, placing top snap 1.5 cm (5/8 in) from upper edge and bottom snap 3 cm (1 1/4 ins) above end of band.

---

**BurdaStyle**

4/2010 Boys' shirt