

# 5/2010 Tunic top for girls

By: burda style magazine

<http://www.burdastyle.com/projects/52010-tunic-top-for-girls>

---



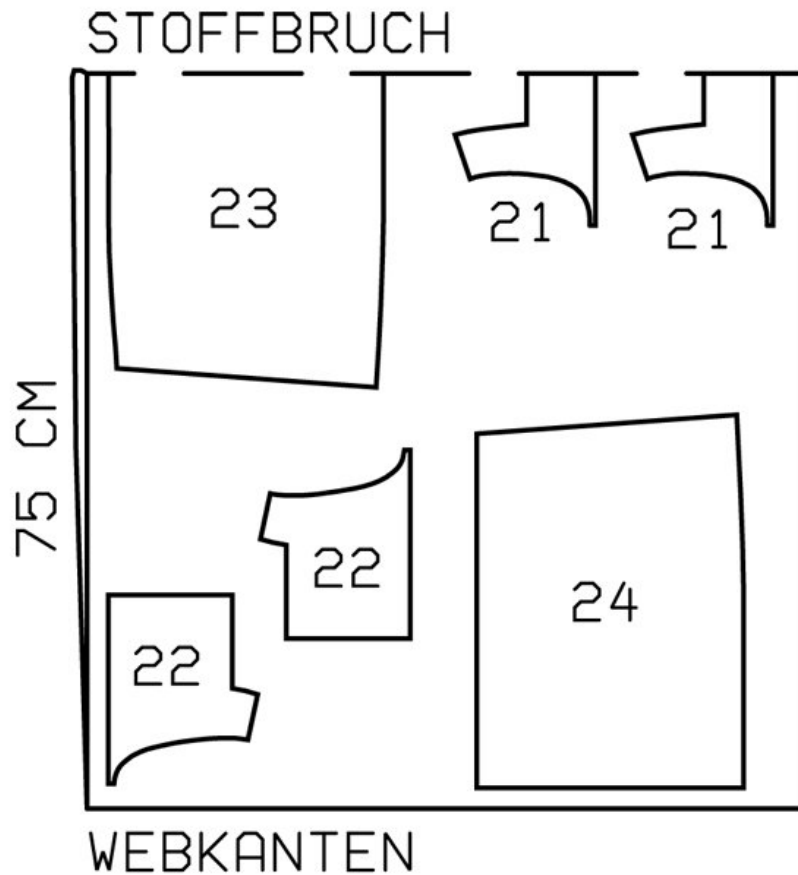
Tunic top for girls burda style magazine patterns FAQ

## Materials

Poplin and lace trim with scalloped edges

---

## Step 1 — Preparation



150 A 104-128

Trace the pattern pieces from the pattern sheet. Follow lines and details for style 150.

The buttonholes on piece 22 are marked for size 104. For sizes 110 — 128, mark the top buttonhole the same distance from neck edge as for size 104. The bottom buttonhole is in the same place for all sizes. Centre the other buttonhole in between. Lay -pieces 22 and 24 together. Measure the spacing between the buttonholes on piece 22 and mark the buttonholes on piece 24 with the same spacing.

Seam and hem allowances:

Seams and edges 1.5 cm (5/8 in), hem 5 cm (2 ins), no allowance on length-wise edge of facing on piece 24.

---

## Step 2 — Cutting Out



21â—front, on a fold 2x

22â—back 4x

23â—front skirt panel, on a fold 1x

24â—back skirt panel 2x

---

### Step 3 — Shoulder seams, stitching along neck and armhole edges

Stitch shoulder seams of bodice. Lay outer and inner front and back pieces right sides together. Stitch along neck edge and armhole edges. Trim seam allowances and clip into corners. Turn bodice right side out by pulling back pieces into front through tunnels at shoulders. Stitch side seams of outer and inner bodice as continuous seams.

---

### Step 4 — Skirt panels

Stitch side seams of skirt panels. Press hem allowance to inside and -stitch 4 cm (15/8 ins) wide. Fold self-facings to inside on fold line and press. Gather upper edge of skirt -panels between asterisks. Stitch skirt to bodice, not catching inner layer. Trim seam allowances to 7 mm (1/4 in) and press up. Turn in inside edge of bodice and sew to skirt joining seam. Topstitch edges of armholes 5 mm (3/16 in) -wide. Trim self-facings of bodice to width of skirt facings and neaten edges.

---

## **Step 5 — Facings**

Lay facings to inside and press. Topstitch back edges 2.5 cm (1 in) -wide.

---

## **Step 6 — Buttonholes**

Work buttonholes along right back fastening edge.

---

**BurdaStyle**

5/2010 Tunic top for girls