

burda style magazine 01/2010 Suit Jacket

By: burda style magazine

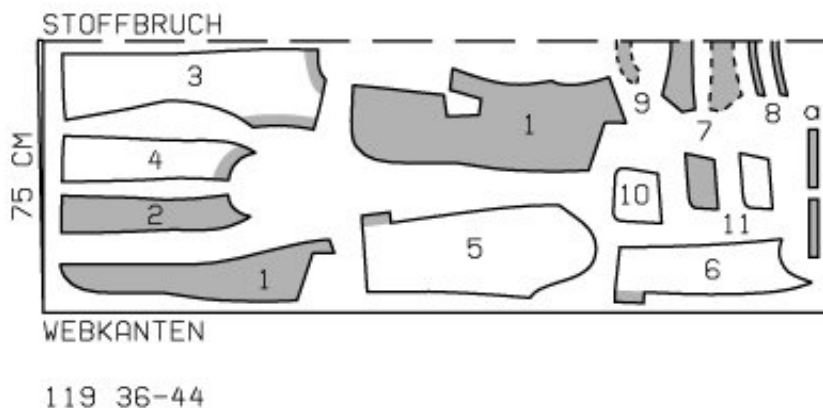
<http://www.burdastyle.com/projects/burda-style-magazine-012010-9>

Suit Jacket burda style magazine patterns FAQ

Materials

Woollen glen check

Step 1 — Preparation



Trace the pattern pieces from the pattern sheet. Follow lines and details for style 119. Trace front facing from piece 1 as a separate pattern piece.

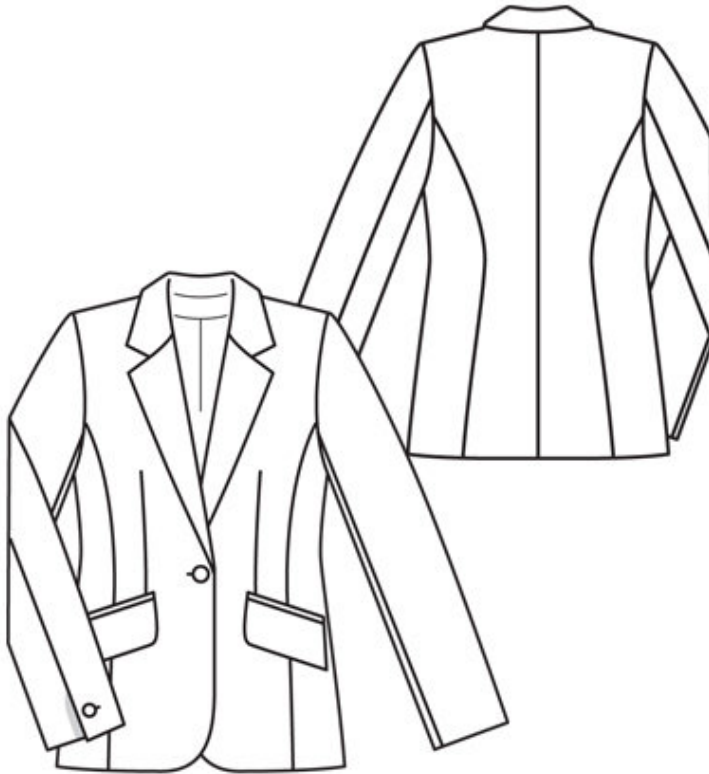
The pocket lines on piece 1 are marked for size 36. For sizes 38 — 44, remark the pocket lines — the pocket begins 1.3 cm (a generous 1/2 in) before the dart.

Centre front lining piece: Trace centre front as a separate pattern piece, to marked lining line. Mark a horizontal line from section seam to point of dart and cut open. Lay vertical dart closed and glue horizontal edges at bottom end of dart together. This creates a bust dart for the lining.

Seam and hem allowances:

Seams and edges 1.5 cm (5/8 in); no allowance on horizontal edges of centre front (scissors symbol), but 1 cm (3/8 in) allowance at dart; hem and sleeve hems 4 cm (15/8 ins); lining 1.5 cm (5/8 in).

Step 2 — Cutting out



Glen check:

- 1 — centre front 2x
- 2 — front facing 2x
- 3 — side front 2x
- 4 — centre back 2x
- 5 — side back 2x
- 6 — upper sleeve 2x
- 7 — undersleeve 2x
- 8 — collar, on a fold 2x
- 9 — collar band, on a fold 2x
- 10 — back facing, on a fold 1x
- 11 — pocket piece 2x
- 12 — flap 4x

a) 4 welt strips, 16 — 16 — 16,5 — 16,5 — 17 cm (63/8 — 63/8 — 61/2 — 61/2 — 63/4 ins) long, 2.5 cm (1 in) wide (incl. allowances).

Lining: centre front as listed under 1 — Preparation — ; piece 3 minus neck facing and at centre back with an ease pleat of about 2 cm (3/4 in); piece 5 without vent allowance; pieces 2, 4, 6 and 10.

Interfacing: See pattern layout. Also interface hem allowances.

Step 3 — Bust Darts

Stitch bust darts. Clip into bottom horizontal edge of centre front piece, close to end of seam. Press dart allowances open and press pointed ends flat. Lay horizontal edges of fronts together and baste with herringbone stitch. Stitch side fronts to centre fronts. Press seam allowances open.

Step 4 — Pockets

Construct welt pockets with flaps on fronts: Mark abutting lines for welts, each 6 mm (1/4 in) from welt joining lines (finished width of welts). Hand-baste along these lines to make them visible on right side of fabric. Fold welt strips lengthwise and press, wrong side facing in. Lay doubled welt strips on fronts and pin so that fold edges of piping meet at abutting lines and open edges lie over marked slash line. Stitch welts to joining lines, 6 mm (1/4 in) from fold edge. Slash between lines of stitching and clip diagonally toward each last stitch. Do not cut into welts. Press welts into pocket openings. Fold small triangles to inside at pocket opening ends and stitch to welts, from seam end to seam end. Stitch pocket lining pieces to seam allowances of lower welt joining seams, and press down. Stitch each interfaced flap piece to flap piece with no interfacing, right sides together, leaving joining edge open. Slip flaps to inside, through pocket openings, and stitch to seam allowances, close to upper welt joining seam. Pin fabric pocket pieces to seam allowances of flaps. Work from side of upper welt seam allowance to stitch close to seam. Trim pocket pieces even and stitch together.

Step 5 — Stitch Seams

Stitch centre back seam, back section seams, side seams, shoulder seams and facing seams. Press seam allowances open

Step 6 — Notched collar, front edges and hem

Pin facing right sides together with jacket. Pin lapel fold lines together. Build a little extra fullness into corners of lapels. Stitch facing to hem edge, front edges, and edges of lapels, to marking. Leave facing lying right sides together with jacket. Stitch collar band pieces to collar pieces (seam number 4). Trim seam allowances and press open. Topstitch close to each side of seams. Stitch collar pieces right sides together along outer edges, beginning and ending exactly at seam line on joining edge. Turn collar right side out and press. Lay collar between jacket and facing. Stitch undercollar to neck edge of jacket, from each marking to corner. Clip seam allowances of fronts into corners. Stitch long edge of undercollar to neck edge of jacket. Stitch top collar to facing, clipping seam allowances of facing into corners. Press seam allowances of collar joining seams open. Turn facing to inside. Press hem allowance to inside and sew in place by hand. Sew facing to hem allowance. Pin collar joining seams together exactly. Lay facing in back up again and stitch seam allowances together, close to collar joining seam. Lay facing down again.

Step 7 — Two-piece sleeve with vent

Lay vent facing and hem allowance of upper sleeve pieces to outside and mitre the corner. Trim allowances of mitred seam to 5 mm (3/16 in) wide and press open. Stitch hem allowance of underarm sleeve pieces right sides together with lengthwise edges of underlaps. Turn hem allowances and vent facings to inside. Press edges of hem and vent to inside and press allowance on long edge of underlaps under. Stitch back sleeve seams to vent mark. Stitch front sleeve seams, laying hem allowances down again. Sew hem allowances in place by hand. Work buttonhole in front edge of each vent. On inside, at top of vent, stitch across facing and underlap.

Step 8 — Sleeves

Set in sleeves, easing sleeve caps. Sew shoulder pads in place.

Step 9 — Line jacket

Stitch allowances of centre seam on back lining pieces together, 1 cm (3/8 in) wide. For the ease pleat, stitch along centre back, at the top and bottom, each about about 5 cm (2 ins) long, and baste in between. Press pleat to one side. Stitch darts and seams of lining. Set in sleeve linings. Stitch lining to inside edges of facing, leaving an opening, about 8 cm (3 1/4 ins) long, at bottom. Lay lining inside jacket with wrong sides facing, pulling linings into sleeves. Pin a fold, about 1 cm (3/8 in) deep, in lining, above hem of jacket. Turn in lining and sew to hem allowance by hand. Remove pins. Lay extra length of lining down and press lightly. Sew remainder of front lining edges in place.

Step 10 — Sew sleeve linings in place

Pin lining seam to sleeve seam at top of vent, pushing lining up a bit. At vent, turn back lining which lies on top. Turn in lining which lies underneath and pin to edge of underlap on undersleeve. Lay turned back lining over vent, trim to 1 cm (3/8 in) before edge of underlap, trim away 1 cm (3/8 in) below vent, and clip diagonally, about 1 cm (3/8 in) long, into corner. Turn in lining and pin to vent facing of upper sleeve and to top end of vent on underlap. Turn in lower edge of lining and pin to hem allowance. Sew lining in place. Stitch lining of other sleeve in place in same manner.

Step 11 — Buttonhole

Work buttonhole in right front.

BurdaStyle

burda style magazine 01/2010 Suit Jacket