

burda style magazine 03/2010 Spring Coat

By: burda style magazine

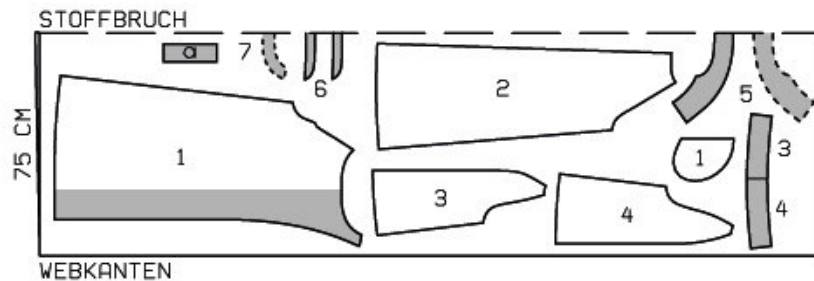
<http://www.burdastyle.com/projects/burda-style-magazine-032010-9>

Spring Coat burda style magazine patterns FAQ

Materials

Bouclé

Step 1 — Preparation

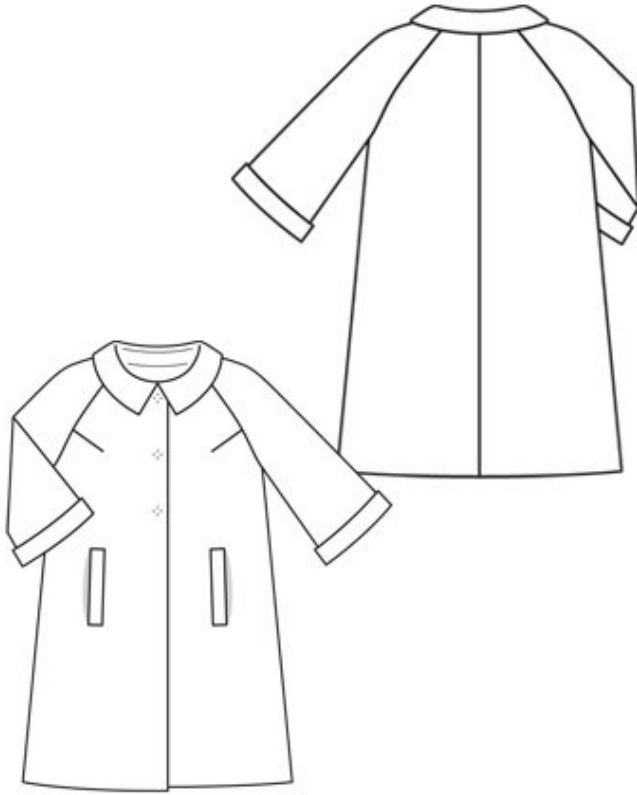


101 A 36-44

Trace the pattern pieces from the pattern sheet. Note the different hem lines for view B. Trace the pocket piece from piece 1 as a separate pattern piece — it is the same for all sizes. Trace the sleeve facings from pieces 3 and 4 as separate pattern pieces. Glue sleeve facings together (top sleeve seam). The snap fasteners on piece 1 are marked for size 36. For the other sizes, mark the top fastener the same distance from neck edge as for size 36. The bottom fastener is in the same place for all sizes. The pocket lines on piece 1 are marked in full for size 36 only. Complete the pocket lines for sizes 38 — 44 accordingly. Seam and hem allowances:

Seams and edges 1.5 cm (5/8 in), hem 4 cm (15/8 ins), lining 1.5 cm (5/8 in).

Step 2 — Cutting Out



Top fabric

1â— front 2x

â— â— pocket piece 2x

2â— back 2x

3â— sleeve front 2x

4â— sleeve back 2x

3â—+â—4â— sleeve facing 2x

5â— collar, on a fold 2x

6â— collar band, on a fold 2x

7â— back facing, on a fold 1x

a) 2 welts, 18 cm (7 ins) long, 6 cm (2 1/2 ins) wide, finished width 3 cm (1 1/4 ins).

Lining: piece 1 to lining line; piece 2 to lining line and at centre back with an ease pleat of about 2 cm (3/4 in); pieces 3 and 4 at the top to lining line and at the bottom minus width of facing; pocket piece (piece 1).

Interfacing: See pattern layout. Also interface hem allowances. Iron strips of interfacing, about 5 cm (2 ins) wide, to wrong side of fabric, over pocket markings.

Vilene Bias Tape: Iron onto edges of armholes.

Step 3 — Bust Darts

Stitch bust darts. Press darts up.

Step 4 — Welt Pockets

Construct welt pockets with flaps on fronts: Mark an abutting line for each welt 7 mm (1/4 in) from joining lines (= finished width of welt). Hand-baste along these lines to make them visible on right side of fabric. Fold welt strips lengthwise, wrong side facing in, and press. Lay doubled strips over pocket markings and pin so that fold edge of each welt meets with abutting line and open edges lie over marked slash line. Stitch welts along joining lines, 7 mm (1/4 in) from fold edges. Slash between lines of stitching and clip diagonally toward each last stitch, not catching welts. Press welts over pocket openings. Fold small triangles at pocket opening ends to inside and stitch to welts, from seam end to seam end. Stitch pocket lining pieces to seam allowances of lower welt joining seams and press down. Lay each interfaced flap piece on a flap piece with no interfacing, right sides together. Stitch side and lower edges together, slightly rounding off bottom corners. Turn right side out. Slip joining edge of flaps through pocket openings and stitch to seam allowances, close to upper welt joining seam. Pin pocket pieces of outer fabric to seam allowances of flaps. Work from seam allowance of upper welt to stitch next to seam. Trim pocket pieces even and stitch together.

Step 5 — Back and Side Seams

Stitch centre back seam and side seams. Press seam allowances open.

Step 6 — Sleeves

Stitch top sleeve seams. Stitch sleeve facings right sides together with lower edges of sleeves. Press seam allowances open. Stitch underneath sleeve seams and facing seams. Turn facings to inside and sew in place.

Step 7 — Stitching sleeves to armhole edges

Stitch sleeves to armhole edges. Press seams open from upper edges to beginnings of underarm curve.

Step 8 — Collar

Unfold front self-facings and stitch to back facing. Stitch facings to neck edge, from front edge to marked centre front. Leave facings lying right sides together with coat for now. Stitch collar band pieces to collar pieces. Trim seam allowances and press open. Topstitch close to each side of seams. Stitch collar pieces right sides together along outer edges. Begin and end stitching exactly on seam of joining edge. Trim seam allowances. Turn collar right side out and press. Lay collar between coat and facing. Stitch undercollar to neck edge of coat and stitch top collar to facing. Press seam allowances open. Turn facing to inside. Pin collar joining seams together. Lay facing in back up again and stitch seam allowances together, close to collar joining seam. Lay facing down.

Step 9 — Hem

Unfold facings at hem. Press hem allowance to inside but do not yet stitch.

Step 10 — Lining

Line jacket, hem: Stitch allowances of centre seam on back lining together, 1 cm (3/8 in) from edge. Stitch along centre back at top and bottom, each about 5 cm (2 ins) long, for ease pleat, and baste in between. Press pleat to one side. Stitch darts and seams of lining. Set in sleeve linings. Stitch lining to inside edges of facing, laying hem allowance down. Lay lining inside jacket, pulling linings into sleeves. Lay hem allowance to inside and sew in place by hand. Turn in lining along lower edge of jacket and press fold edge lightly. Push upward in a shallow curve and pin to hem allowance. Sew facings and lining in place. Lay extra length of lining down and press lightly. Now first pin lining to underlap of sleeve vents. Trim lining lying on top to 1 cm (3/8 in) before edge of underlap, trim away 1 cm (3/8 in) below end of vent, and clip about 1 cm (3/8 in) long into corner. Turn in lining and pin to inside edge of vent facing and to top of vent. Turn in lower edge of lining and pin to hem allowance. Sew lining in place.

Turn in sleeve lining and sew to facing. Turn up lower edges of sleeves, about 4 cm (1 5/8 ins) wide.

Step 11 — Snaps and Buttons

Cover snap fasteners with lining fabric. Sew top halves of snaps to inside of right front as marked, taking even stitches and exiting needle on right side of fabric. Sew bottom halves of snaps to left front to match. Make a thread loop at top corner of right front. Sew button to left front to match loop.

BurdaStyle

burda style magazine 03/2010 Spring Coat