

Mandarin Collar Jacket 02/2012

By: burda style magazine

<http://www.burdastyle.com/projects/mandarin-collar-jacket-022012>



Sewing pattern for jacket with mandarin collar. Practice your sewing skills with this beautiful jacket made with printed silk satin, finished with binding and backed with batting for the best look. burda style magazine patterns FAQ

Materials

Silk satin, fabric width: 140 cm (55 ins), length: 1.30 1.30 1.35 1.35 1.35 m (1 1/2 1 1/2 1 5/8 1 5/8 1 5/8 yds). Lining, fabric width: 140 cm (55 ins) length: 1.10 1.10 1.10 1.15 1.15 m (1 1/4 1 1/4 1 1/4 1 3/8 1 3/8 yds). Batting Vilene/Pellon 281, width: 150 cm (59 ins) length: 1.10 m (11/4 yds). Petersham ribbon, 1.5 cm (5/8 in) wide: 1.40 m (60 ins). Petersham ribbon, 1 cm (3/8 in) wide: 0.75 m (30 ins). 2 fabric-covered buttons. 3 small hooks and eyes.

Step 1 — Preparations



This pattern is printed on 8.5 × 11 sheets of plain paper. Do not scale or center pages before printing. Wait until all sheets are printed out before beginning to tape them together. **Do not cut out pattern pieces yet**— Arrange the sheets on a large, hard, flat surface so that they fit together, matching up like numbers and letters (i.e. 6A to 6A). To tape pattern together, fold under the margin of one piece (6A) and tape right against the line of it's matching number/letter (6A).

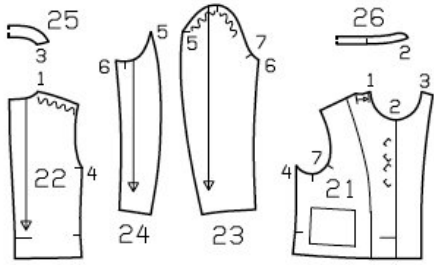
Trace the pattern pieces from the pattern sheet following the lines and markings for the correct size and the correct style (112). (This pattern also includes pattern pieces, lines and markings for style 113 that should be ignored.). Trace the pocket from piece 21 as a separate pattern piece.

The fasteners marked on piece 21 are for size 34. For remaining sizes, move the top markings up, to the same distance from neck edge. The bottom markings are in the same place for all sizes. The pleat arrow on piece 21 is marked for size 34. For the other sizes, remark the pleat arrow accordingly.

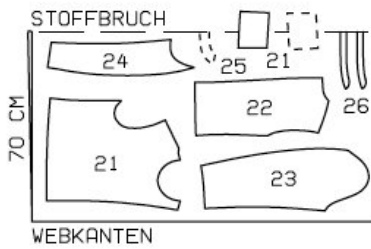
burda style magazine pattern do not have seam allowance included.

Seam and hem allowances to be added: Seams and edges 1.5 cm (5/8 in), hem and sleeve hems 5 cm (2 ins), lining 1.5 cm (5/8 in).

Step 2 — Cutting out



Silk satin, 140 cm wide. Cut from a double layer of fabric, right side facing in.



Stoffbruch = fold
Webkante = selvage

Satin:

- 21 front 2x
- pocket 2x
- 22 back 2x
- 23 upper sleeve 2x
- 24 under sleeve 2x
- 25 back facing, on a fold 1x
- 26 standing collar, on a fold 2x

Lining: piece 21 to lining line; piece 22 minus neck facing and with an ease pleat of approx. 2 cm (3/4 in) at centre back; pieces 23 and 24; and pocket (piece 21).

Batting: piece 21 to front edge (facing fold line), pieces 22 to 24, piece 26 once, and also pocket (from piece 21). For the pockets, separate the layers of batting and use only half the thickness. Baste the batting pieces to the wrong sides of the pieces of main fabric.

Step 3 — Sewing

Jacket

Fold pleats in front shoulder seam edges in direction of arrows and baste. Lay the back pieces right sides together, line up, pin and stitch centre back seam. Lay the front pieces right sides together with the back

piece, line up, pin and sew the side seams. Press the seam allowances open. Line up, pin and sew the shoulder seams. Press the seam allowances open.

Press the hem allowance to inside and stitch 3.5 cm (1 1/2 ins) from lower edge.

Patch pockets

Lay pocket pieces of main fabric and lining right sides together. Stitch along side and lower edges. Turn pockets right side out. Press. Stitch upper pocket edges together, close to marked seam line. Trim away allowances on upper pocket edges. Work from inside to stitch 1.5 cm (5/8 in) wide petersham ribbon to upper pocket edges, stitching 7 mm (1/4 in) from edge. Turn in ends of ribbon. Fold ribbon over pocket edges and stitch in place. Edgestitch pockets in place, on jacket fronts.

Turn front self-facings to outside and stitch to back facing. Leave the facing lying right sides together with jacket for now.

Mandarin collar

Lay the collar pieces right sides together. Stitch along the front and upper collar edges, beginning and ending in front, exactly at seam line on joining edge. Trim seam allowances. Turn collar right side out and press. Lay collar between jacket and facing. Stitch outer collar piece to neck edge of jacket and stitch inside collar piece to facing. Press the seam allowances open. Turn the facing to the inside. Pin the joining seams of the collar together exactly. Turn facing up again and stitch seam allowances as close together as possible, to the collar joining seam. Turn facing down again. Sew facing to hem allowance. Topstitch 3.5 cm (1 1/2 ins) from front edges. Bind the edge of the collar with petersham ribbon. For best results on the rounded collar ends, sew by hand, with small stitches.

Sleeves

Lay the upper sleeve piece and the under sleeve pieces, right sides together, line up, pin and stitch sleeve side seams. Press the seam allowances open.

Press sleeve hem allowances to inside and stitch 3.5 cm (1 1/2 ins) from lower edge. Bind the lower sleeve edges with petersham ribbon.

Set in sleeves. Turn the garment inside out and set in sleeves in each armhole, right sides facing each other, easing the sleeve caps. Pin the sleeve to the armhole and stitch around the armhole opening. Press the seam allowance out in to the sleeve. Sew shoulder pads in place.

Sew lining

On back lining pieces, stitch centre seam allowances together, 1 cm (3/4 in) from edge. For the ease pleat, stitch along centre back at top and bottom, each approx. 5 cm (2 ins) long, and baste in between. Press pleat to one side. Stitch the seams of the lining. Set in the sleeve linings.

Stitch lining right sides together with inside facing edge, leaving approx. 8 cm (3 1/4 ins) open at the bottom. Lay the lining inside of the jacket, wrong sides facing, pulling linings into sleeves. Pin folds, approx. 1 cm (3/8 in) deep, in lining, above jacket hem and sleeve hems. Turn in lining and sew to hem allowances by hand. Remove pins, lay extra length of lining down, and press. Sew open edges of lining to front.

Fastenings

For the loops on the right fastening side, cut two 17 cm (6 3/4 in) long pieces of 1 cm (3/8 in) wide petersham ribbon. Fold each piece in half so that ends lie next to each other and a point is formed at the other end. Press the point. Beginning at the point, stitch the abutting edges together with small zigzag stitches, approx. 2 cm (3/4 in) long. Then leave a buttonhole open, 2 cm (3/4 in) long. Sew remaining abutting edges together. Turn in ends of ribbon for a finished length of 7.5 cm (3 ins). Pin loops to right front edge at

placement lines. Edgetitch ribbon in place. For the tabs on the left fastening side, cut the ribbon into two 15 cm (6 in) long pieces. Sew the tabs as for the loops, but without the buttonhole. Finished length of tab is 6.5 cm (2 5/8 ins). Stitch tabs to left front edge at placement lines. Sew one button to each tab, to match buttonhole of loop. Sew hooks and eyes under front edges: 3.5 cm (1 1/2 ins) below corner of neck edge and space remaining fasteners approx. 7.5 cm (3 ins) apart.

BurdaStyle

Mandarin Collar Jacket 02/2012