

10/2010 Leather jacket with detachable fur collar

By: burda style magazine

<http://www.burdastyle.com/projects/102010-leather-jacket-with-deta>



Leather jacket with detachable fur collar burda style magazine patterns FAQ

Materials

Lamb nappa leather

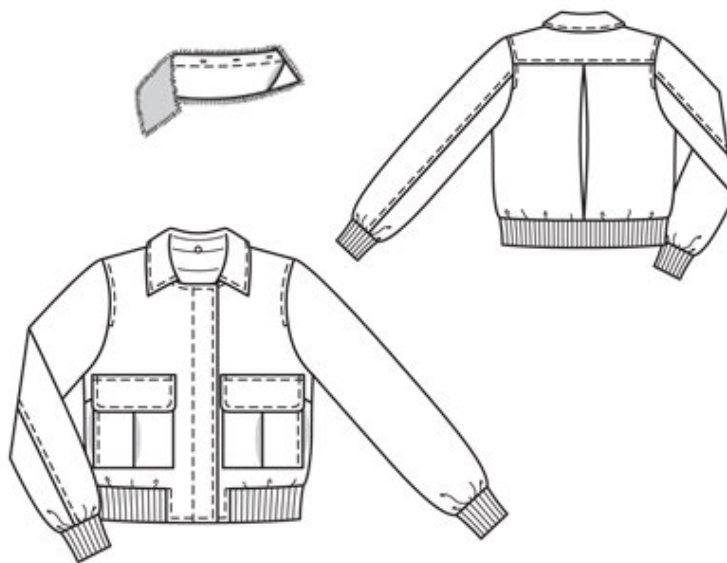
Step 1 — Preparation

Trace the pattern pieces from the pattern sheet. Trace the front facing from piece 21 as a separate pattern piece. Trace the facings from piece 31 (collar corner and inside edge) each as a separate pattern piece. The stitching lines on pieces 21 and 22 (armholes) are marked for size 36. For sizes 38 — 44, mark the stitching lines the same distance from respective size lines. The buttonholes on piece 31 are marked for size 36. For sizes 38 — 44, move the centre back buttonhole the same distance from respective size lines. Centre the other buttonholes between centre back and end buttonholes.

Seam and hem allowances:

Seams and edges 1.5 cm (5/8 in).

Step 2 — Cutting out



Cutting out:

Leather:

21 front 2x

front facing 2x

22 back 2x

23 back yoke, on a fold 1x

24 front sleeve 2x

25 back sleeve 2x

26 pocket 2x

27 flap 4x

28 back facing, on a fold 1x
29 collar, on a fold 2x
30 collar band, on a fold 2x
Pleat underlay, 38 — 38.5 — 38.5 — 39
— 39 cm (15 — 15¼ — 15¼ — 15½ —
15½ ins) long, 9 cm (3½ ins) wide.

Imitation fur:

31 top collar, on a fold 1x

Lining:

31 undercollar, on a fold 1x

collar facing (inside edge),

on a fold 1x

collar facing (corner), on a fold 2x

Pieces 21 and 23 minus width of facing; piece 22, on a fold; and also pieces 24 and 25.

Step 3 — Bust Darts

Stitch bust darts. Cut darts along centre to 5 cm (2 ins) before point. Trim darts allowances to 1 cm (3/8 in) wide and press open, pressing points of darts flat.

Step 4 — Patch pockets

Fold pleats in pocket pieces in arrow direction (right and left pockets as mirror images). Topstitch close to inside fold edge. Lay pleat closed again and stitch to seam allowance on upper and lower edges of pocket. Turn allowances to inside on all edges and adhere with glue stick. Topstitch 1 cm (3/8 in) from upper and side edges of pockets. Lay pockets on fronts at abutting lines and edgestitch front and lower edges in place. Stitch side edges of pockets in place, from lower edges to bottom marking and at marking stitch horizontally to inside seam. Above top marking, edgestitch side edges of pockets in place. Stitch horizontally at marking and at upper edge.

Step 5 — Flaps

Stitch each interfaced flap piece to flap piece with no interfacing, right sides together, leaving joining edge open. Turn right side out. Topstitch 7 mm (1/4 in) from edges. Stitch flaps to jacket fronts, 1.5 cm (5/8 in) above pockets. Press flaps down and stitch again next to joining seams.

Step 6 — Back pieces

On each back piece, press inside pleat depth to inside as marked. Lay back pieces next to each other with wrong side facing up and with pleat folds touching. Hold in place at top and bottom with tape. Work from inside to place pleat underlay over pleat and stitch long edges together. Stitch pleat to seam allowances on top and bottom edges.

Step 7 — Yoke and back

Stitch back yoke to back. Topstitch yoke along seam. Stitch side seams and shoulder seams. Stitch shoulder seams of facing. Spread seam allowances open and glue down (textile glue).

Step 8 — hem band

Measure 63 — 65 — 67 — 71 — 73 cm (24³/₄ — 25³/₄ — 26¹/₂ — 28 — 28³/₄ ins) on rib knit hem band (including 1.5 cm/ 5/8 in seam allowances on both ends). Trim away the remainder of band. Stretch hem band and stitch to lower edge of jacket — finished width of hem band 6.5 cm (25/8 ins). Clip seam allowances of fronts diagonally toward ends of seams. Lay seam allowances of hem band joining seam up. Stitch front ends of hem band to jacket fronts.

Step 9 — Zip

For sizes 38 — 44, shorten separating zip at the top: Measure length of front edge minus 5 mm (3/16 in) and mark on zip tape. Use pliers to remove top stoppers and surplus teeth of zip, up to the marking. Reattach stoppers and press firmly to secure. Trim zip tapes 2 cm (3/4 in) above teeth.

Step 10 — FACING

Use tailor's chalk to mark centre front on right front facing and on left front. Open zip. Pin right zip tape (without pull-tag) face down on right front facing so that zip teeth meet marked line. Zip tape points toward inside edge of facing. Bottom end of zip lies 5 mm (3/16 in) above marked lower edge of jacket and top end of zip tape lies on seam allowance. Adhere zip tape with glue stick. Stitch zip tape in place, close to teeth of zip. Lay other zip tape (with pull-tag) face up on left front edge so that teeth meet marked line and zip tape points toward side seam. Adhere zip tape with glue stick and stitch tape in place, close to teeth of zip. Lay facing right sides together with jacket. Stitch along front hem edges, front edges and neck edge, up to marking (seam number 4). Leave facing lying right sides together with jacket for now.

Step 11 — Collar

Stitch collar band pieces to collar pieces. Trim seam allowances and spread open. Topstitch close to each side of seams. Stitch collar pieces together along outer edges, building a little extra fullness into top collar and beginning and ending stitching in front, exactly on seam line of joining edge. Turn collar right side out. Lay collar between jacket and facing. Stitch undercollar to neck edge of jacket and stitch top collar to facing. Spread seam allowances open. Turn facing to inside. Press edges. Pin collar joining seams together exactly. Lay back facing up again and stitch seam allowances together, close to collar joining seam. Lay facing down again.

Step 12 — Front facings

On inside edge of front facings, clip allowance at height of hem band joining seam. Below clippings, lay allowances to inside and glue to short hem band joining seams (glue stick). Topstitch jacket close to short hem band joining seams and close to front and lower edges, neck edge, and edges of collar.

Step 13 — Sleeves

Stitch back sleeve seams (seam number 6). Topstitch front sleeves close to seams. Stitch underneath sleeve seams. Spread seam allowances open and glue down. Stitch edges of sleeve bands together to lower edges of sleeves, stretched slightly.

Step 14 — Sleeve caps

Set in sleeves, easing sleeve caps. Top stitch fronts, yoke and back along sleeve attachment seams, as marked.

Step 15 — Pleat

Stitch pleat in back lining piece along centre back, about 3 cm (1 1/4 ins) long at both upper and lower edges, and baste in between. Press pleat to one side. Stitch darts and seams of lining. Set in sleeve linings.

Step 16 — Lining

Stitch lining to inside edges of facing, stitching as far as possible at the lower edge. Lay lining inside jacket with wrong sides facing, pulling linings into sleeves. Turn in lower edge of lining and sew to hem band joining seam. Turn in lower edge of sleeve linings and sew to sleeve band joining seams.

Step 17 — Zip

Use the zipper foot of your sewing machine to topstitch right front edge vertically as marked, catching zip. On left front, edgestitch side edge of zip tape in place, catching the facing.

Step 18 — Button-on fur collar

Fold facings for corners of collar on marked fold line and press. Baste to collar lining piece. Baste long facing under inside edge of collar lining and stitch as marked. Work buttonholes. Stitch collar lining right sides together with fur collar, pushing hairs of fur toward collar. Leave an opening, about 10 cm (4 ins) long, at centre of inside edge, for turning. Trim seam allowances, trimming corners diagonally. Turn collar right side out. Sew opening closed. Lay fur collar on jacket collar and sew buttons to inside of jacket to match buttonholes of collar.

BurdaStyle

10/2010 Leather jacket with detachable fur collar